

PRODUCT INFORMATION PACKET



Model No: C6C14DR19D

Catalog No: 114225.00

1/2HP..37kW.1425RPM.56H.IP22./V.1PH.50HZ.CONT.NOT.40C.1.25SF.RESIL.50 HERTZ.C6C14DR19D
50 Hz



Regal and Leeson are trademarks of Regal Beloit Corporation or one of its affiliated companies.

©2018 Regal Beloit Corporation, All Rights Reserved. MC017097E

REGAL



Nameplate Specifications

Output HP	0.50 Hp	Output KW	0.37 kW
Frequency	50 Hz	Voltage	110/220 V
Current	8.2/4.1 A	Speed	1425 rpm
Service Factor	1.25	Phase	1
Efficiency	69 %	Duty	Continuous
Insulation Class	B	Design Code	NO DESIGN CODE
KVA Code	K	Frame	D56H
Enclosure	Drip Proof	Overload Protector	No
Ambient Temperature	40 °C	Drive End Bearing Size	6203
Opp Drive End Bearing Size	6203	UL	Recognized
CSA	Y	CE	Y
IP Code	22		

Technical Specifications

Electrical Type	Capacitor Start Induction Run	Starting Method	Across The Line
Poles	4	Rotation	Selective Counterclockwise
Mounting	Resilient Base	Motor Orientation	HORIZONTAL
Drive End Bearing	BALL	Opp Drive End Bearing	BALL
Frame Material	Rolled Steel	Shaft Type	NEMA 56
Overall Length	11.31 in	Frame Length	5.50 in
Shaft Diameter	0.625 in	Shaft Extension	1.88 in
Assembly/Box Mounting	F1 ONLY		
Outline Drawing	032510-D56	Connection Diagram	005390.01

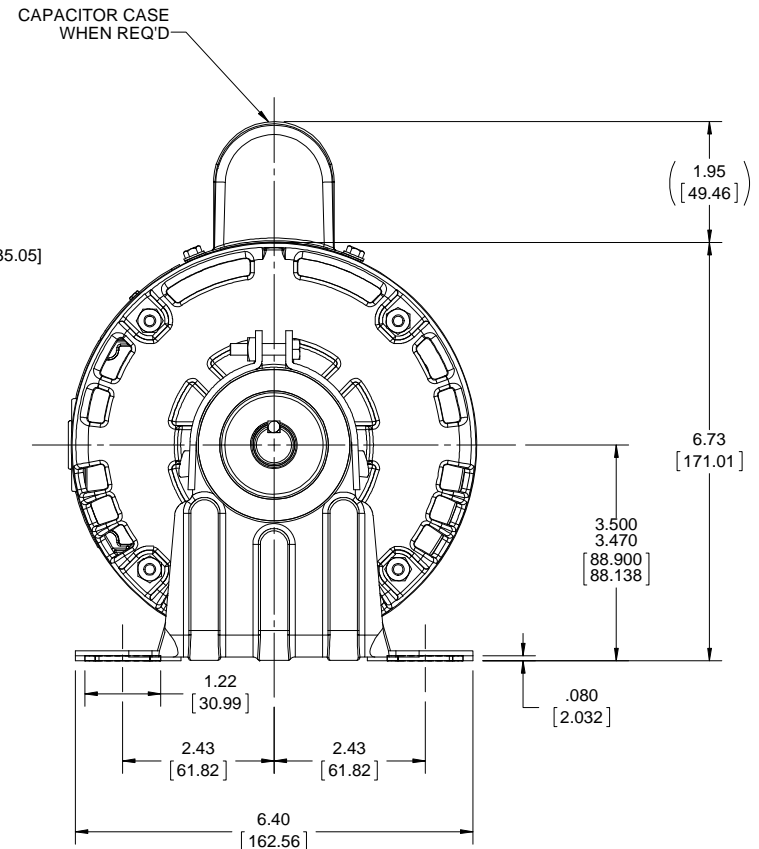
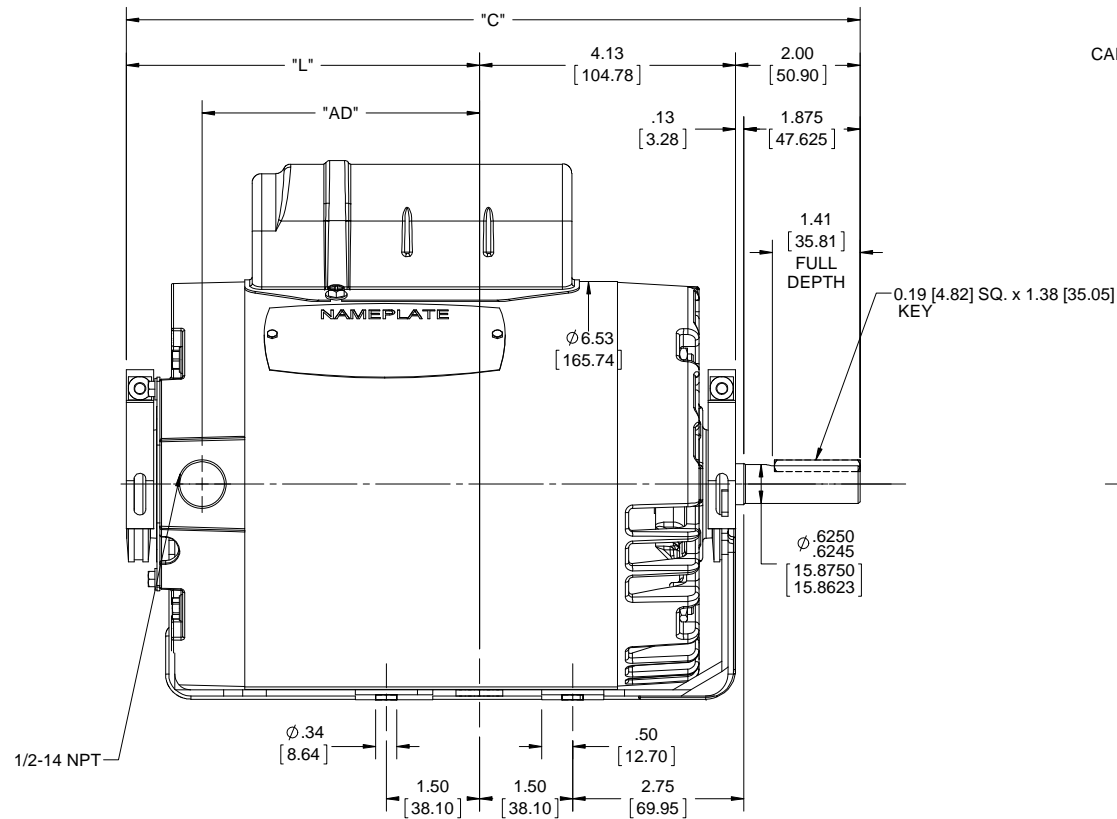
4

3

Uncontrolled Copy

2

1



FRAME	"C"	"L"	"AD"
C56	10.81 [274.57]	4.69 [119.12]	3.47 [88.13]
D56	11.31 [287.27]	5.19 [131.82]	3.97 [100.83]
E56	11.81 [299.97]	5.69 [144.52]	4.47 [113.53]
F56	12.31 [312.67]	6.19 [157.22]	4.97 [126.23]
G56	12.81 [325.37]	6.69 [169.92]	5.47 [138.93]
H56	13.31 [338.07]	7.19 [182.62]	5.97 [151.63]
J56	13.81 [350.77]	7.69 [195.32]	6.47 [164.33]

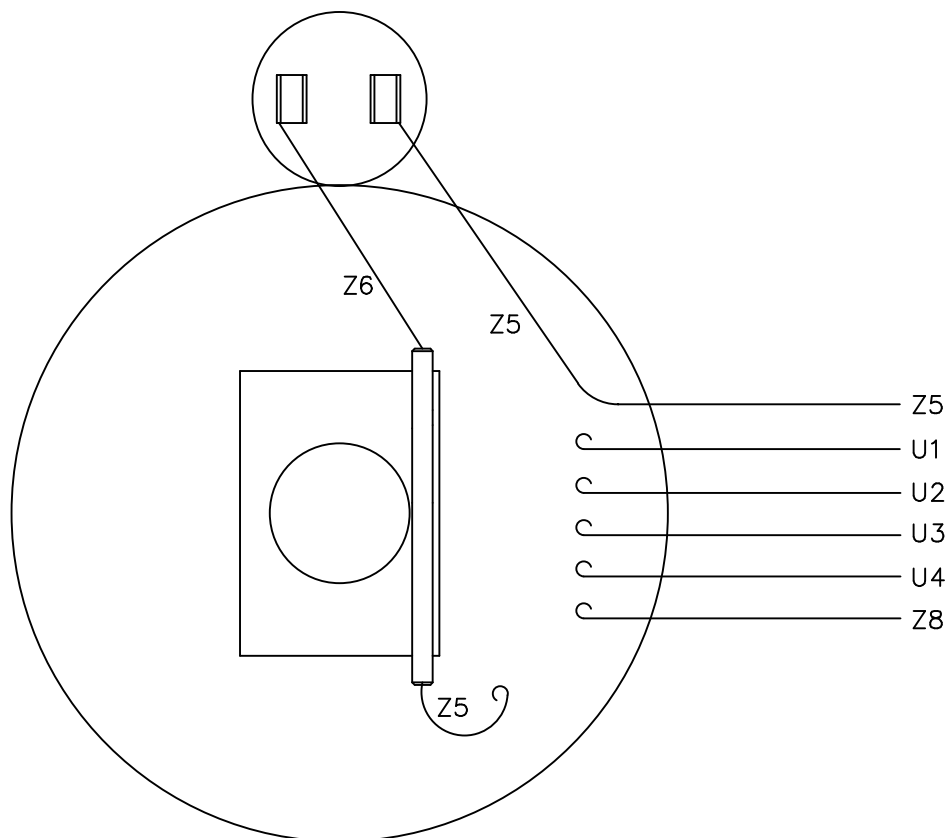
DRAWING REVISION C	REVISION BY H. ADIKE	DATE 2-14-2018
ECO ECO-0143018	APPROVED BY PK	DATE 4-10-2018
ECO DESCRIPTION OUTLINE CONVERSION PROJECT		
COPYRIGHT REGAL BELOIT AMERICA, INC. ALL RIGHTS RESERVED. PROPRIETARY AND CONFIDENTIAL INFORMATION - THIS DOCUMENT IS THE PROPERTY OF REGAL BELOIT AMERICA, INC. (OWNER) AND CONTAINS OWNER'S PROPRIETARY INFORMATION. ANY PERSON, CORPORATION OR OTHER FIRM RECEIVING IT IS DEEMED, BY RECEIVING IT, TO AGREE THAT IT, AND/OR ANY PART OF IT, SHALL NOT BE DISCLOSED TO ANY PERSON, CORPORATION OR OTHER ENTITY, DUPLICATED, AND/OR USED, EXCEPT AS EXPRESSLY APPROVED IN WRITING IN ADVANCE BY OWNER. THIS DOCUMENT SHALL BE RETURNED TO OWNER UPON REQUEST. IT MAY BE SUBJECT TO CERTAIN RESTRICTIONS UNDER APPLICABLE EXPORT CONTROL LAWS AND REGULATIONS.		

TOLERANCES UNLESS OTHERWISE SPECIFIED:			
DEC.	INCH	mm	ANGLE
.X	±0.1	[±2.5]	±7° 30'
.XX	±0.03	[±0.76]	
.XXX	±0.005	[±0.127]	
.XXXX	±0.0005	[±0.0127]	
REMOVE BURRS & BREAK SHARP			
EDGES: .003/.015 [0.076/.381] X 45°			
CORNER FILLETS: R.02 [0.51]			
MACHINED SURFACES: 200 INCH/mm 5.1			
mm SHOWN IN [BRACKETS]			

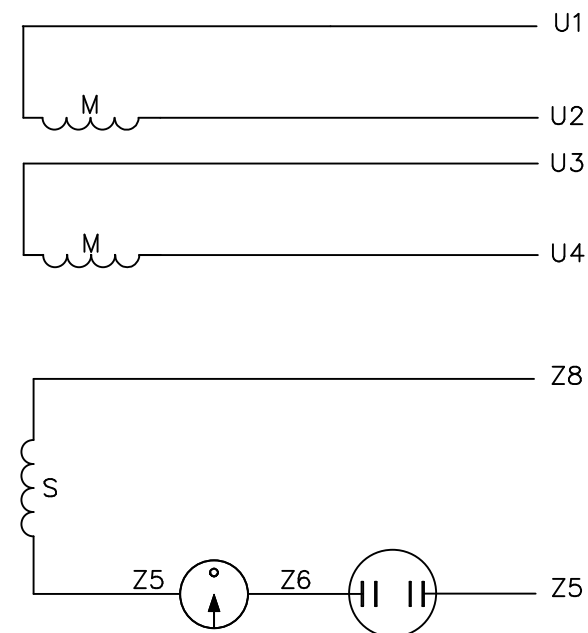
DRAWN BY ADH	DATE 10-25-2013
APPROVED BY	DATE
REFERENCE 032510	THIRD ANGLE PROJECTION

REGAL™ Regal Beloit America, Inc.	
DESCRIPTION OUTLINE 56 FRAME OPEN DRIP PROOF - RESIL. BASE	
MATERIAL	PROCESS/FINISH
SIZE B	DRAWING NUMBER 032510
SHEET 1 OF 1	

VIEW FROM OUTSIDE OF MOTOR AT SWITCH END.



LINE LEADS



	ROTATION FACING LEAD END	L1	L2	JOIN
HIGH VOLT	C.C.W.	U1	U4 Z5	U2,U3 Z8
	C.W.	U1	U4 Z8	U2,U3 Z5
LOW VOLT	C.C.W.	U1,U3 Z8	U2,U4 Z5	---
	C.W.	U1,U3 Z5	U2,U4 Z8	---

TOLERANCES
UNLESS SPECIFIED

DEC. INCHES

.X ±.1

.XX ±.01

.XXX ±.005

.XXXX ±.0005

ANG ±1/2"

ELECTRIC MOTORS
GEARMOTORS
AND DRIVES

DRAWN RSK 09/09/96

CHK

APPD

SCALE 1=1

REF 005005-01

FMF 114964.00

PREV

TITLE
EXTERNAL WIRING DIAGRAM
TYPE "C" W/O PROTECTOR

MAT'L. DECAL - 080642

FINISH LEESON CANADA

NO. REVISION BY & DATE

CHK

RFP

DIST

CAD FILE 00539001

SIZE

A

DRAWING NO.

005390-01

REV.

THIS DRAWING IN DESIGN AND DETAIL IS OUR PROPERTY AND MUST NOT BE USED EXCEPT
IN CONNECTION WITH OUR WORK ALL RIGHTS OF DESIGN AND INVENTION ARE RESERVED
THIS IS AN ELECTRONICALLY GENERATED DOCUMENT - DO NOT SCALE THIS PRINT

Model No 114225.00Catalog No 114225.00

LEESON ELECTRIC CORPORATION

TYPICAL PERFORMANCE CURVE for AC MOTOR

Curve at

220

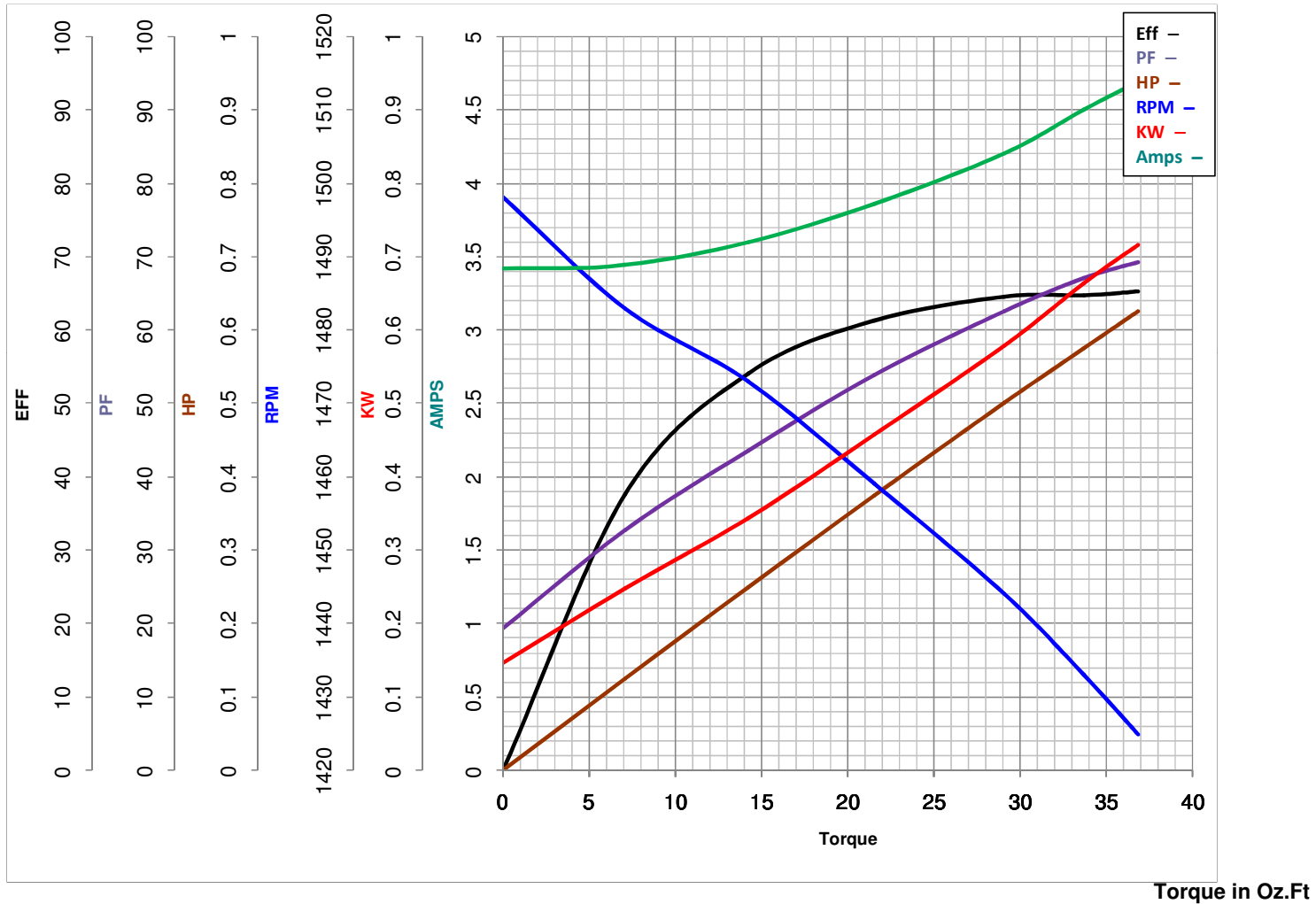
Volts

HP 0.50PHASE 150

HZ

0.5

HP

VOLTS 110/220HZ 50RPM 1425FL TORQUE 29.1 Oz.FtBD TORQUE 76.0 Oz.FtLR TORQUE 94 Oz.Ft

WINDING C634268-4

FL AMPS 8.2/4.1PU TORQUE 61.0 Oz.FtLR AMPS 20.91

Date 4/12/2018