

PRODUCT INFORMATION PACKET



Model No: C145K34FK9 A

Catalog No: 121825.00

3HP..3450RPM.145.TEFC./230V.1PH.60HZ.CONT.NOT.40C.1SF.RIGID C..C145K34FK9A

Totally Enclosed Fan Cooled (TEFC)



Regal and Leeson are trademarks of Regal Beloit Corporation or one of its affiliated companies.

©2018 Regal Beloit Corporation, All Rights Reserved. MC017097E



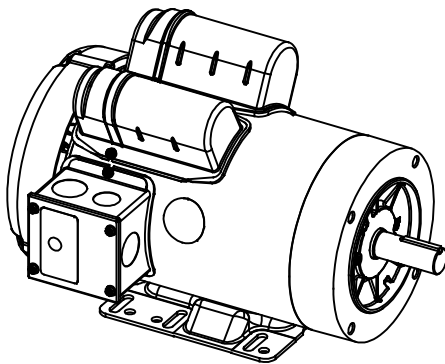
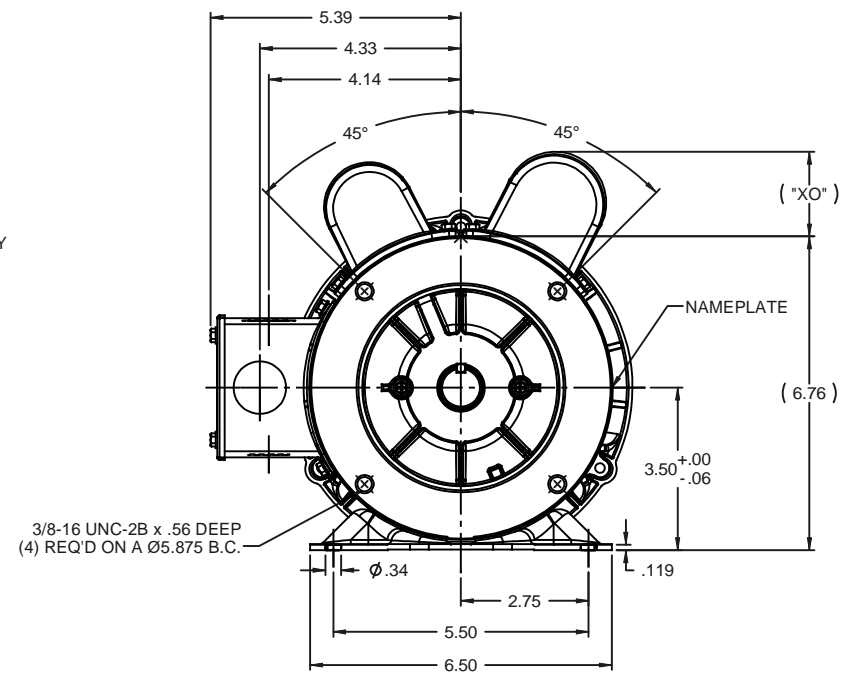
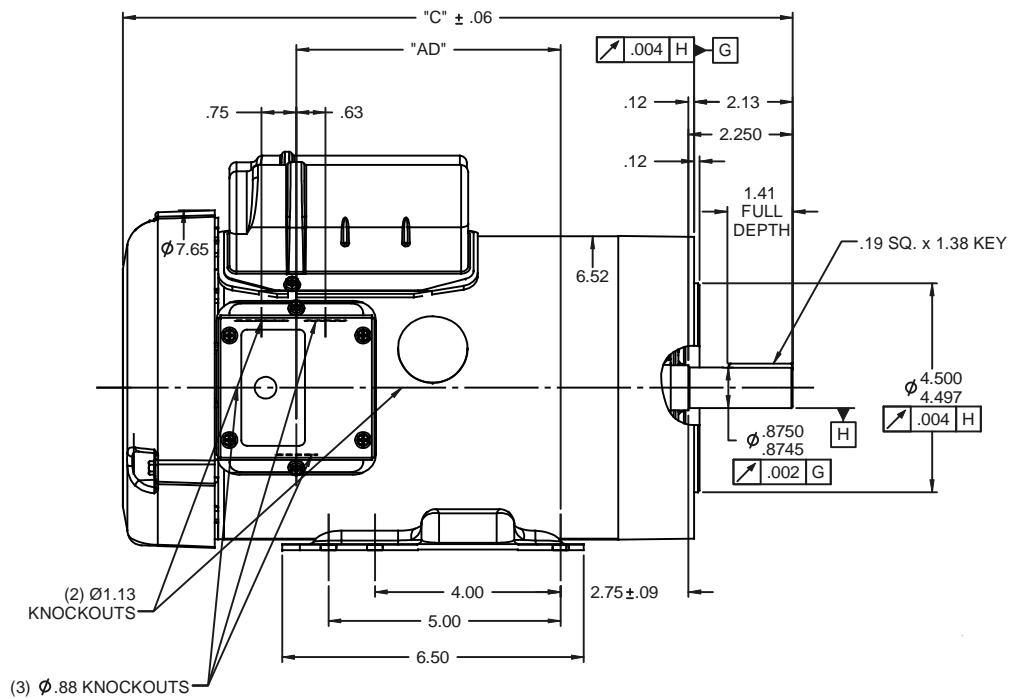


Nameplate Specifications

Output HP	3 Hp	Output KW	2.2 kW
Frequency	60 Hz	Voltage	230 V
Current	13.0 A	Speed	3450 rpm
Service Factor	1	Phase	1
Efficiency	81.5 %	Duty	Continuous
Insulation Class	F	Design Code	L
KVA Code	J	Frame	145TC
Enclosure	Totally Enclosed Fan Cooled	Overload Protector	No
Ambient Temperature	40 °C	Drive End Bearing Size	6205
Opp Drive End Bearing Size	6203	UL	Recognized
CSA	Y	CE	N
IP Code	43		

Technical Specifications

Electrical Type	Capacitor Start Capacitor Run	Starting Method	Across The Line
Poles	2	Rotation	Selective Counterclockwise
Mounting	Rigid base	Motor Orientation	HORIZONTAL
Drive End Bearing	BALL	Opp Drive End Bearing	BALL
Frame Material	Rolled Steel	Shaft Type	T
Overall Length	14.43 in	Frame Length	8.50 in
Shaft Diameter	0.875 in	Shaft Extension	2.25 in
Assembly/Box Mounting	F1 ONLY		
Outline Drawing	028800-850C	Connection Diagram	005018.01

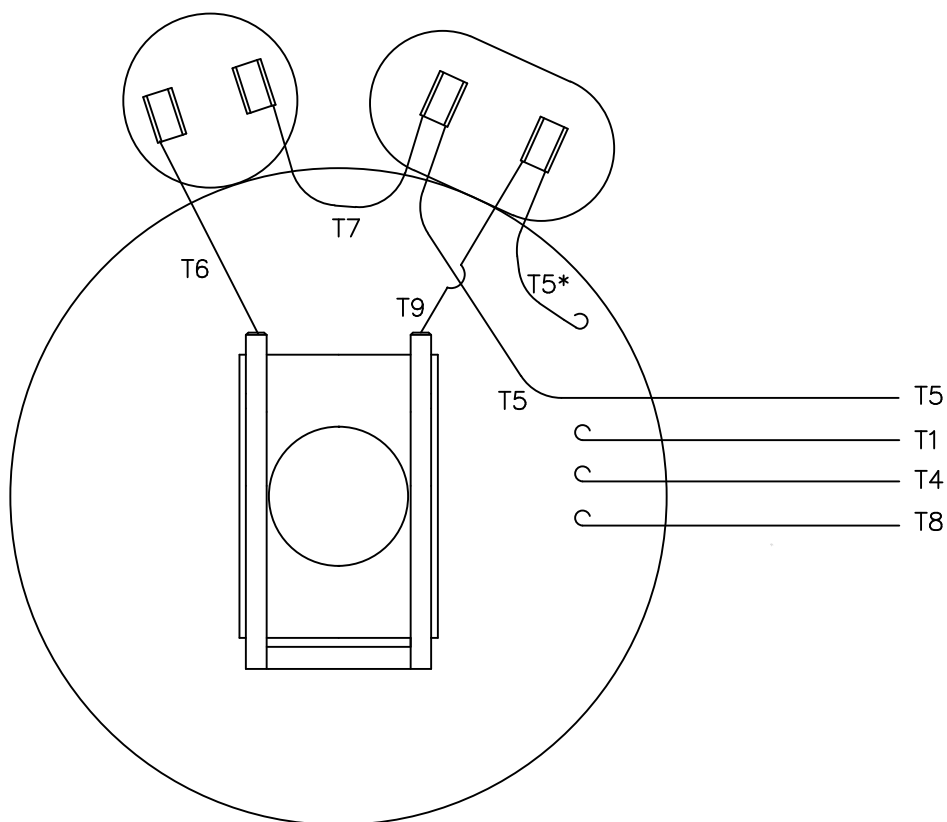


DASH NO.	"C"	"AD"	CAP DASH	"XO"
700	12.93	4.19	A	1.15
750	13.43	4.69	B	1.60
800	13.93	5.19	C	1.82
850	14.43	5.69		

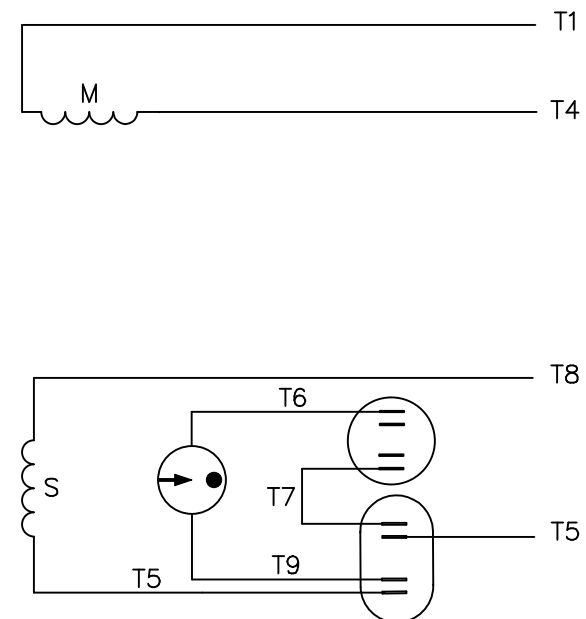
NOTE:
1) GASKETS THROUGHOUT

TOLERANCES UNLESS SPECIFIED		DEC INCHES		TITLE		DRAWN KMM 09/27/07	
		X	$\pm .1$			CHK	
		XX	$\pm .03$	OUTLINE - 145TC FRAME		APPR	
		XXX	$\pm .005$	TEFC - RIGID "C" FACE		SCALE 3:8	
		XXXX	$\pm .0005$	MATL		REF OL120274	
						FMF 120274.00	
NO	REVISION	BY & DATE	CHK ANG $\pm 1/2^\circ$	FINISH		PAGE OF	
	THIRD ANGLE PROJECTION		RFP	PREV		SIZE B	DRAWING NO 028800
			NETWORK FILE NAME				REV

VIEW FROM OUTSIDE OF MOTOR AT SWITCH END.



LINE LEADS

ROTATION
FACING
LEAD END

L1

L2

C.C.W.

T1,T8


T4,T5

C.W.

T1,T5

T4,T8

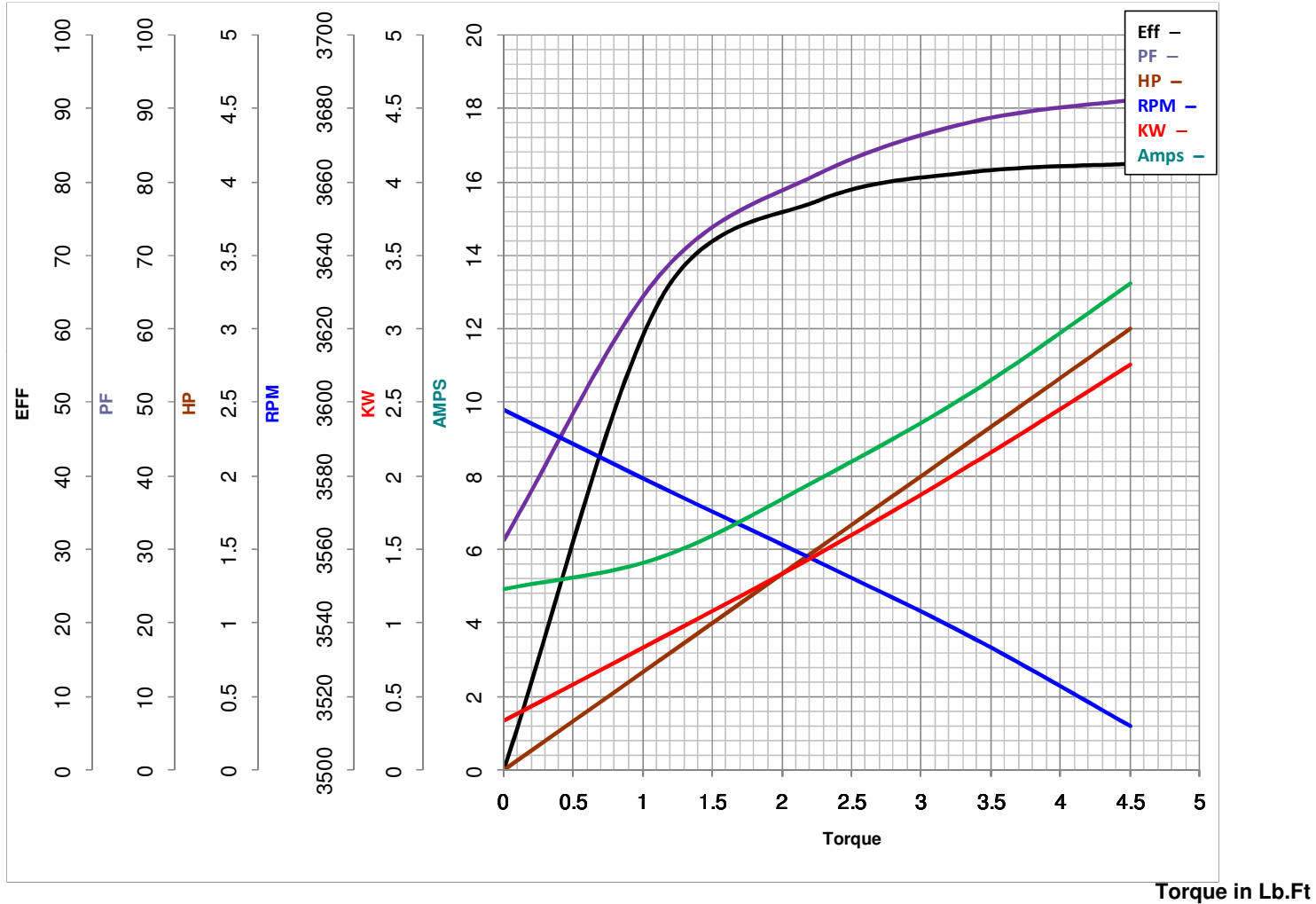
* THIS LEAD MAY BE WHITE

				TOLERANCES UNLESS SPECIFIED			ELECTRIC MOTORS GEARMOTORS AND DRIVES		DRAWN ADH 02/19/74		
				DEC.	INCHES				CHK WRK 02/20/74		
				.X	±.1				APPD JCW 02/20/74		
20	ALTERNATE T5 LEAD MARKING WAS RED	RLW 7/22/02	KH .XX	±.01	TITLE EXTERNAL WIRING DIAGRAM TYPE "K" W/O PROTECTOR				SCALE 1=1		
19	ADDED ALTERNATE T5 LEAD MARKING	RLW 5/31/02	KH .XXX	±.005					REF		
18	REDRAWN ON CAD	DBT 06/24/97		.XXXX	±.0005	MAT'L. DECAL – 004018				FMF	
NO.	REVISION	BY & DATE	CHK	ANG	±1/2"	FINISH				PREV	
THIS DRAWING IN DESIGN AND DETAIL IS OUR PROPERTY AND MUST NOT BE USED EXCEPT IN CONNECTION WITH OUR WORK ALL RIGHTS OF DESIGN AND INVENTION ARE RESERVED THIS IS AN ELECTRONICALLY GENERATED DOCUMENT – DO NOT SCALE THIS PRINT			RFP		CAD FILE 00501801			SIZE A	DRAWING NO. 005018–01		REV. 20
			DIST BRF–NLV								



LEESON ELECTRIC CORPORATION

TYPICAL PERFORMANCE CURVE for AC MOTOR

Model No 121825.00Curve at 230
60
3Volts
HZ
HPHP 3.00PHASE 1VOLTS 230HZ 60RPM 3450Catalog No 121825.00

FL TORQUE 4.5 Lb.Ft
 BD TORQUE 13.5 Lb.Ft
 LR TORQUE 12.5 Lb.Ft

FL AMPS 13
 PU TORQUE 12.0 Lb.Ft
 LR AMPS 100

WINDING K632129-2

Date 3/27/2018