

# PRODUCT INFORMATION PACKET



Model No: C6C14DR16D

Catalog No: 114227.00

..3/4HP..1425RPM.56H.IP22.110/220v.1PH.50HZ.CONT.40C.1.25SF.RESILIENT.C6C14DR16D.....50  
HERTZ.NOT.....55kW...

50 Hz



Regal and Leeson are trademarks of Regal Beloit Corporation or one of its affiliated companies.

©2018 Regal Beloit Corporation, All Rights Reserved. MC017097E

REGAL



## Nameplate Specifications

Output HP	<b>0.75 Hp</b>	Output KW	<b>0.55 kW</b>
Frequency	<b>50 Hz</b>	Voltage	<b>110/220 V</b>
Current	<b>11.8/5.9 A</b>	Speed	<b>1425 rpm</b>
Service Factor	<b>1.25</b>	Phase	<b>1</b>
Efficiency	<b>68 %</b>	Duty	<b>Continuous</b>
Insulation Class	<b>B</b>	Design Code	<b>NO DESIGN CODE</b>
KVA Code	<b>J</b>	Frame	<b>E56H</b>
Enclosure	<b>Drip Proof</b>	Overload Protector	<b>No</b>
Ambient Temperature	<b>40 °C</b>	Drive End Bearing Size	<b>6203</b>
Opp Drive End Bearing Size	<b>6203</b>	UL	<b>Recognized</b>
CSA	<b>Y</b>	CE	<b>Y</b>
IP Code	<b>22</b>		

## Technical Specifications

Electrical Type	<b>Capacitor Start Induction Run</b>	Starting Method	<b>Across The Line</b>
Poles	<b>4</b>	Rotation	<b>Selective Counterclockwise</b>
Mounting	<b>Resilient Base</b>	Motor Orientation	<b>HORIZONTAL</b>
Drive End Bearing	<b>BALL</b>	Opp Drive End Bearing	<b>BALL</b>
Frame Material	<b>Rolled Steel</b>	Shaft Type	<b>NEMA 56</b>
Overall Length	<b>11.81 in</b>	Frame Length	<b>6.00 in</b>
Shaft Diameter	<b>0.625 in</b>	Shaft Extension	<b>1.88 in</b>
Assembly/Box Mounting	<b>F1 ONLY</b>		
Outline Drawing	<b>032510-E56</b>	Connection Diagram	<b>005390.01</b>

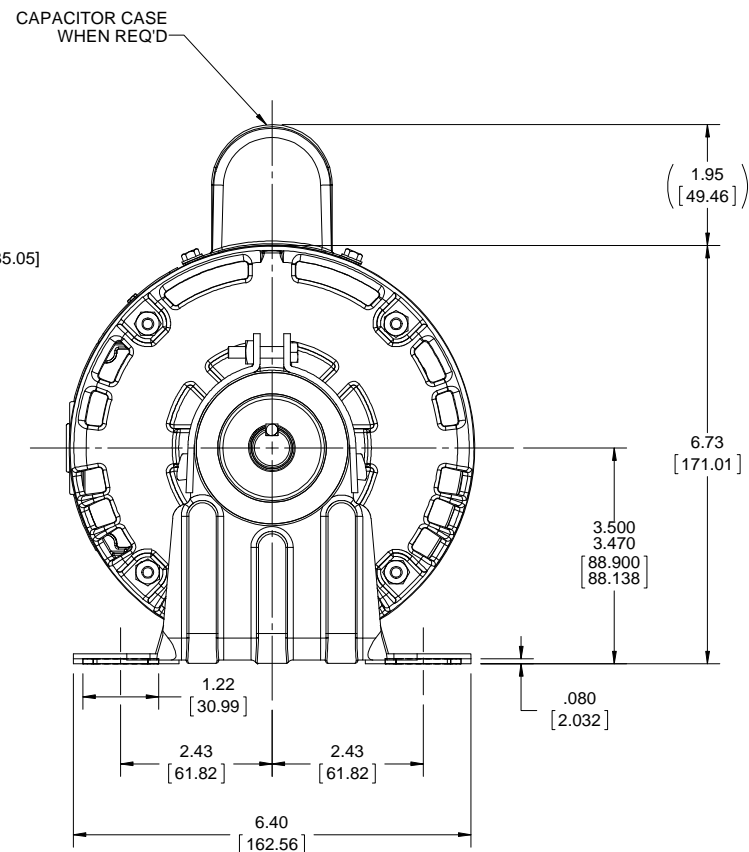
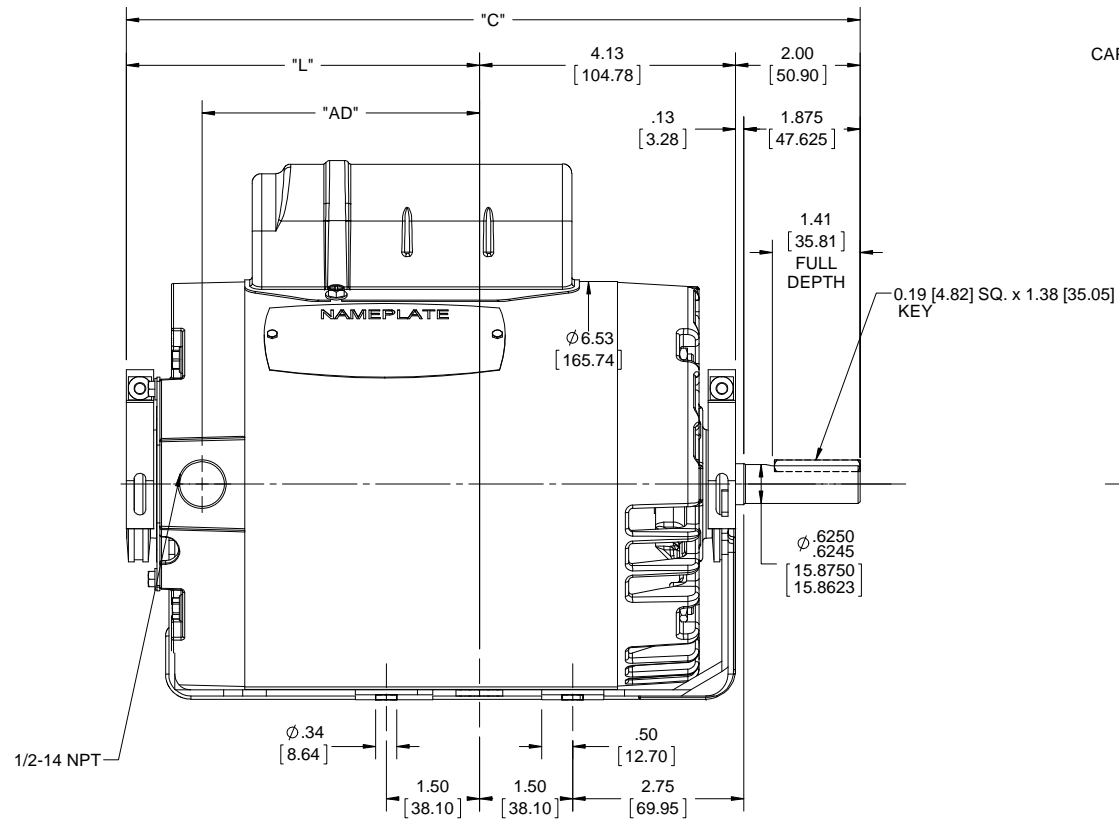
4

3

Uncontrolled Copy

2

1



FRAME	"C"	"L"	"AD"
C56	10.81 [274.57]	4.69 [119.12]	3.47 [88.13]
D56	11.31 [287.27]	5.19 [131.82]	3.97 [100.83]
E56	11.81 [299.97]	5.69 [144.52]	4.47 [113.53]
F56	12.31 [312.67]	6.19 [157.22]	4.97 [126.23]
G56	12.81 [325.37]	6.69 [169.92]	5.47 [138.93]
H56	13.31 [338.07]	7.19 [182.62]	5.97 [151.63]
J56	13.81 [350.77]	7.69 [195.32]	6.47 [164.33]

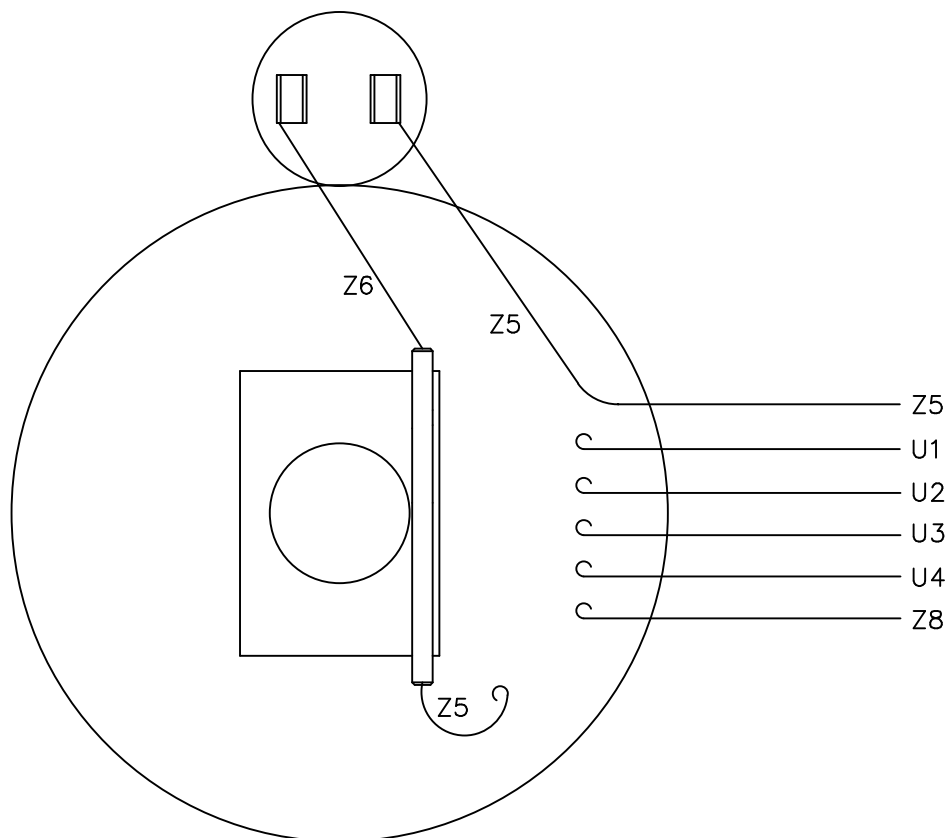
DRAWING REVISION C	REVISION BY H. ADIKE	DATE 2-14-2018
ECO ECO-0143018	APPROVED BY PK	DATE 4-10-2018
ECO DESCRIPTION OUTLINE CONVERSION PROJECT		
COPYRIGHT REGAL BELOIT AMERICA, INC. ALL RIGHTS RESERVED. PROPRIETARY AND CONFIDENTIAL INFORMATION - THIS DOCUMENT IS THE PROPERTY OF REGAL BELOIT AMERICA, INC. (OWNER) AND CONTAINS OWNER'S PROPRIETARY INFORMATION. ANY PERSON, CORPORATION OR OTHER FIRM RECEIVING IT IS DEEMED, BY RECEIVING IT, TO AGREE THAT IT, AND/OR ANY PART OF IT, SHALL NOT BE DISCLOSED TO ANY PERSON, CORPORATION OR OTHER ENTITY, DUPLICATED, AND/OR USED, EXCEPT AS EXPRESSLY APPROVED IN WRITING IN ADVANCE BY OWNER. THIS DOCUMENT SHALL BE RETURNED TO OWNER UPON REQUEST. IT MAY BE SUBJECT TO CERTAIN RESTRICTIONS UNDER APPLICABLE EXPORT CONTROL LAWS AND REGULATIONS.		

TOLERANCES UNLESS OTHERWISE SPECIFIED:			
DEC.	INCH	mm	ANGLE
.X	±0.1	[±2.5]	±7° 30'
.XX	±0.03	[±0.76]	
.XXX	±0.005	[±0.127]	
.XXXX	±0.0005	[±0.0127]	
REMOVE BURRS & BREAK SHARP			
EDGES: .003/.015 [0.076/.381] X 45°			
CORNER FILLETS: R.02 [51]			
MACHINED SURFACES: 200 INCH/mm 5.1			
mm SHOWN IN [BRACKETS]			

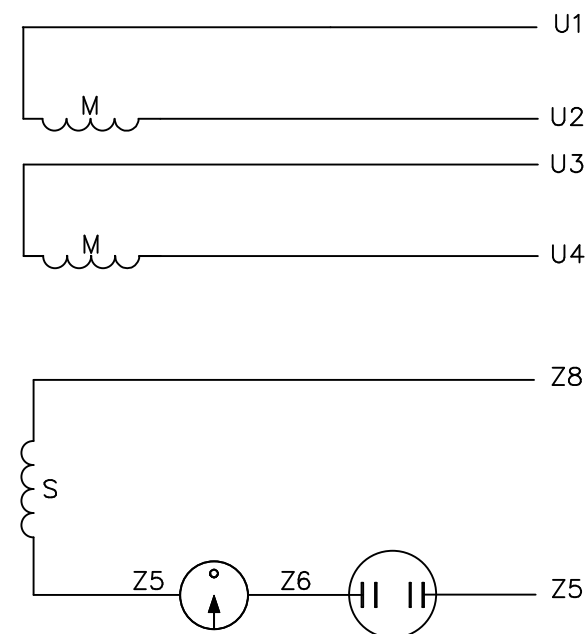
DRAWN BY ADH	DATE 10-25-2013
APPROVED BY	DATE
REFERENCE 032510	THIRD ANGLE PROJECTION

REGAL™ Regal Beloit America, Inc.	
DESCRIPTION OUTLINE 56 FRAME OPEN DRIP PROOF - RESIL. BASE	
MATERIAL	PROCESS/FINISH
SIZE B	DRAWING NUMBER 032510
SHEET 1 OF 1	

VIEW FROM OUTSIDE OF MOTOR AT SWITCH END.



## LINE LEADS



	ROTATION FACING LEAD END	L1	L2	JOIN
HIGH VOLT	C.C.W.	U1	U4 Z5	U2,U3 Z8
	C.W.	U1	U4 Z8	U2,U3 Z5
LOW VOLT	C.C.W.	U1,U3 Z8	U2,U4 Z5	---
	C.W.	U1,U3 Z5	U2,U4 Z8	---

TOLERANCES  
UNLESS SPECIFIED

DEC. INCHES

.X ±.1

.XX ±.01

.XXX ±.005

.XXXX ±.0005

ANG ±1/2"

ELECTRIC MOTORS  
GEARMOTORS  
AND DRIVES

DRAWN RSK 09/09/96

CHK

APPD

SCALE 1=1

REF 005005-01

FMF 114964.00

PREV

NO. REVISION BY &amp; DATE

CHK

RFP

DIST

TITLE

EXTERNAL WIRING DIAGRAM  
TYPE "C" W/O PROTECTOR

MAT'L.

DECAL - 080642

FINISH

LEESON CANADA

SIZE

A

DRAWING NO.

005390-01

REV.

THIS DRAWING IN DESIGN AND DETAIL IS OUR PROPERTY AND MUST NOT BE USED EXCEPT  
IN CONNECTION WITH OUR WORK ALL RIGHTS OF DESIGN AND INVENTION ARE RESERVED  
THIS IS AN ELECTRONICALLY GENERATED DOCUMENT - DO NOT SCALE THIS PRINT

Model No 114227.00Catalog No 114227.00

# LEESON ELECTRIC CORPORATION

## TYPICAL PERFORMANCE CURVE for AC MOTOR

Curve at

220

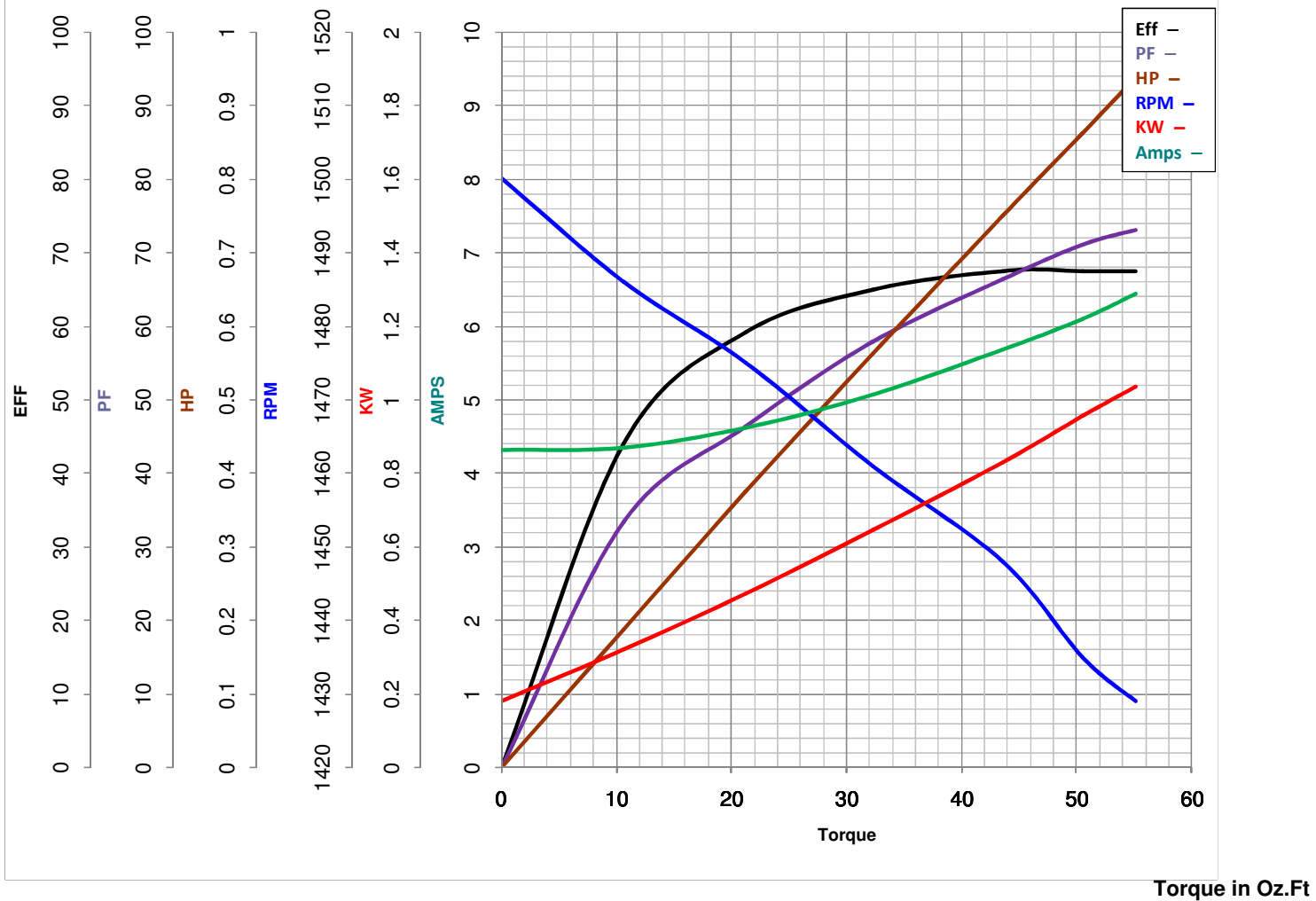
Volts

HP 0.75PHASE 150

HZ

VOLTS 110/2200.75

HP

HZ 50RPM 1425FL TORQUE 43.6 Oz.FtBD TORQUE 107.1 Oz.FtLR TORQUE 144.8 Oz.Ft

WINDING C634265-6

FL AMPS 11.8/5.9PU TORQUE 105.1 Oz.FtLR AMPS 26.7Date 7/17/2018