

PRODUCT INFORMATION PACKET



Model No: P6K34DB22C

Catalog No: 116523.00

..5SPLHP..3450RPM.56.DP.208-230V.1PH.60HZ.CONT.40C.1.0SF.RIGID.P6K34DB22C.....AIR
COMPRESSOR.MANUAL.....

Air Compressor



Regal and Leeson are trademarks of Regal Beloit Corporation or one of its affiliated companies.

©2018 Regal Beloit Corporation, All Rights Reserved. MC017097E



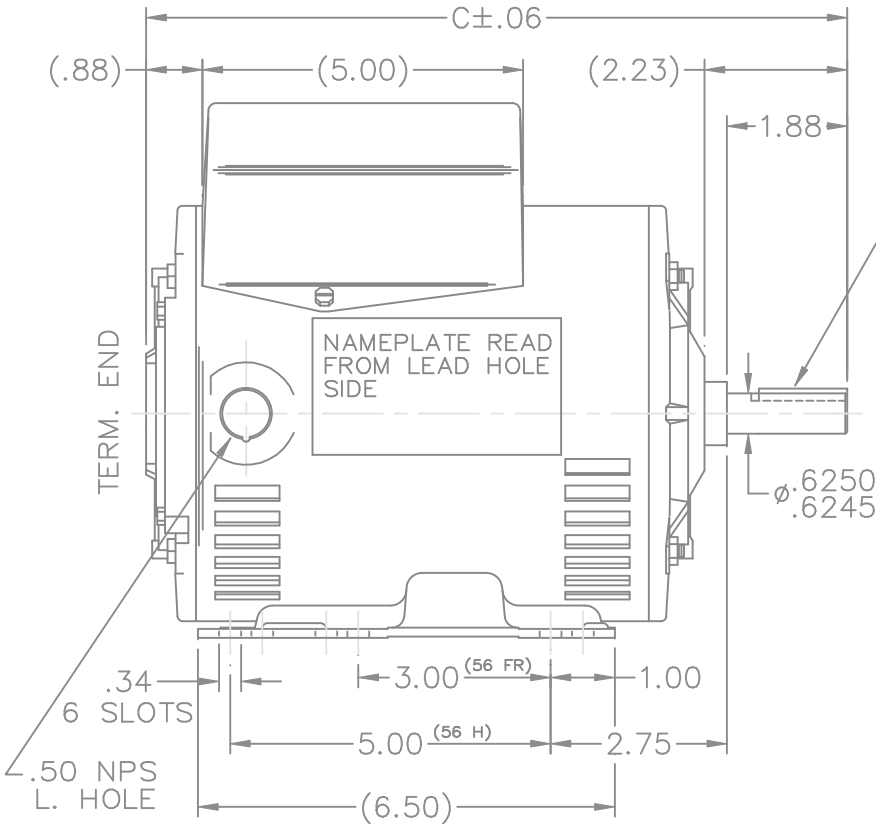


Nameplate Specifications


| | | | |
|----------------------------|-------------|------------------------|----------------|
| Output HP | 5 Hp | Output KW | 5.3 kW |
| Frequency | 60 Hz | Voltage | 208-230 V |
| Current | 15.0-15.0 A | Speed | 3450 rpm |
| Service Factor | 1 | Phase | 1 |
| Efficiency | 70 % | Duty | Continuous |
| Insulation Class | F | Design Code | NO DESIGN CODE |
| KVA Code | C | Frame | 56 |
| Enclosure | Drip Proof | Overload Protector | Manual |
| Ambient Temperature | 40 °C | Drive End Bearing Size | 205 |
| Opp Drive End Bearing Size | 203 | UL | Recognized |
| CSA | Y | CE | N |
| IP Code | 22 | | |

Technical Specifications

| | | | |
|-----------------------|-------------------------------|-----------------------|----------------------------|
| Electrical Type | Capacitor Start Capacitor Run | Starting Method | Across The Line |
| Poles | 2 | Rotation | Selective Counterclockwise |
| Mounting | Rigid base | Motor Orientation | HORIZONTAL |
| Drive End Bearing | BALL | Opp Drive End Bearing | BALL |
| Frame Material | Rolled Steel | Shaft Type | T |
| Overall Length | 11.44 in | Frame Length | 7.56 in |
| Shaft Diameter | 0.625 in | Shaft Extension | 1.88 in |
| Assembly/Box Mounting | F1 ONLY | | |
| Outline Drawing | 100146LE-756 | Connection Diagram | 102006-14LE |

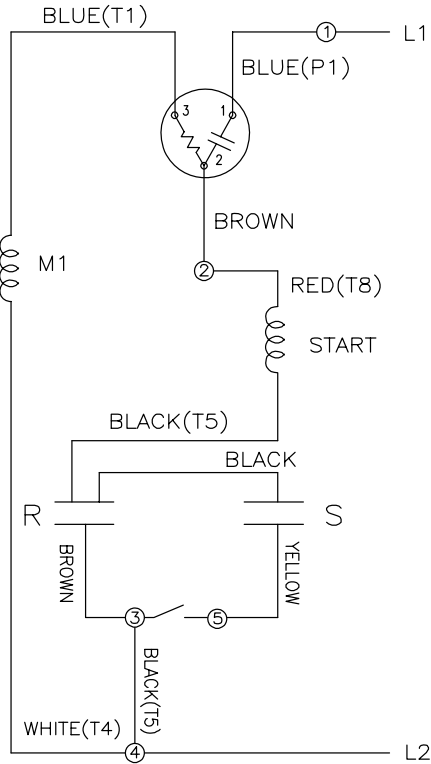


| DASH | FR. | C | DASH | FR. | C |
|------|-------|-------|------|-------|-------|
| 756 | 56-75 | 11.44 | 856 | 56-85 | 12.44 |
| 806 | 56-80 | 11.94 | 906 | 56-90 | 12.94 |
| | | | | | |

| | | | | | | | | | | | | | |
|--|----------|--|-----------|--------------------------------|------------|---|---|-------------------|----------------------|------|-------------------------|--|------|
| | | | | TOLERANCES UNLESS SPECIFIED | |  | ELECTRIC MOTORS GEARMOTORS AND DRIVES | | DRAWN RWR 04/02/2004 | | | | |
| | | | | DEC. | INCHES | | | | CHK ML 04/02/2004 | | | | |
| | | | | .X | ±.1 | | | | APPD JET 04/02/2004 | | | | |
| | | | | .XX | ±.03 | | | | SCALE 3=9 | | | | |
| | | | | .XXX | ±.005 | | | | REF MU50225 | | | | |
| | | | | .XXXX | ±.0005 | TITLE OUTLINE 56 FRAME | | FMF | | | | | |
| NO. | REVISION | | BY & DATE | | CHK | ANG | ±7'30" | FINISH | | PREV | | | |
| THIS DRAWING IN DESIGN AND DETAIL IS OUR PROPERTY AND MUST NOT BE USED EXCEPT IN CONNECTION WITH OUR WORK ALL RIGHTS OF DESIGN AND INVENTION ARE RESERVED THIS IS AN ELECTRONICALLY GENERATED DOCUMENT – DO NOT SCALE THIS PRINT | | | | | RFP | | | CAD FILE 100146LE | | SIZE | DRAWING NO. PAGE 1 OF 1 | | REV. |
| | | | | | DIST WP—LE | | | | | A | 100146LE | | |

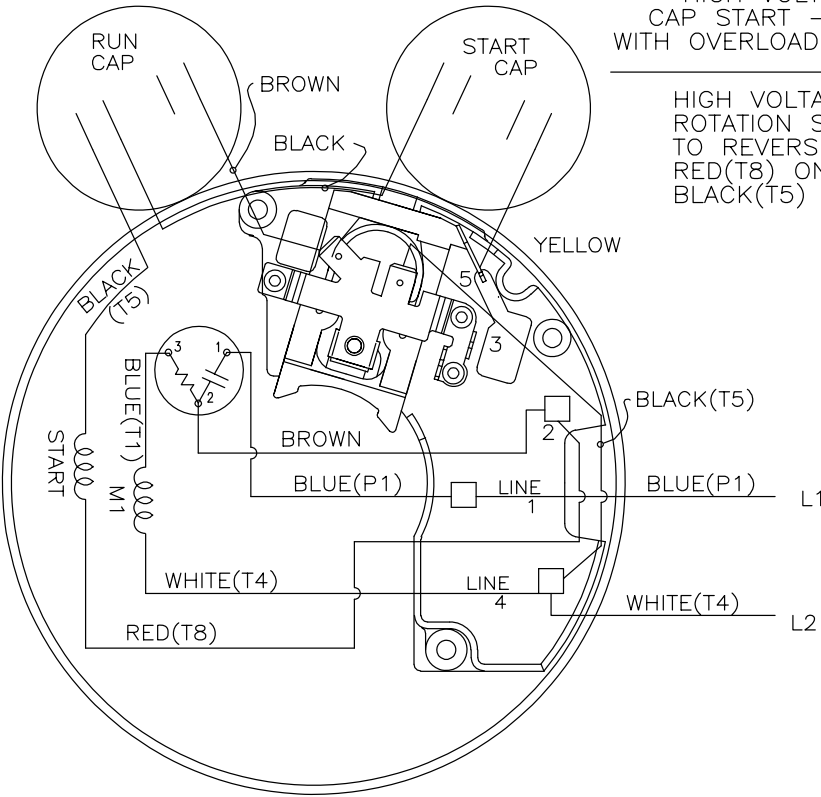
102006-14LE

HIGH VOLTAGE - CCW




HIGH VOLTAGE
CAP START - CAP RUN
WITH OVERLOAD - SELECT ROT.

HIGH VOLTAGE CCW
ROTATION SHOWN
TO REVERSE INTERCHANGE
RED(T8) ON TERM. 2 WITH
BLACK(T5) ON TERM. 4



NOTE: USE P AND T TERMNALS WHEN CALLED IN BOM

| | | | | | | | | |
|--|-------------------------|---------------|------------|--------------------------------|--------|---|----------------------|----------------|
| | | | | TOLERANCES UNLESS SPECIFIED | |  ELECTRIC MOTORS GEARMOTORS AND DRIVES | DRAWN RWR 04/02/2004 | |
| | | | | DEC. | INCHES | | CHK | ML 04/02/2004 |
| | | | | .X | ±.1 | | APPD | JET 04/02/2004 |
| | | | | .XX | ±.03 | | SCALE 5=8 | |
| | | | | .XXX | ±.005 | TITLE CONNECTION DIAGRAM | REF | MU50225 |
| B | ADDED P AND T TERMINALS | PST 2/20/2014 | SKM .XXXX | ±.0005 | MAT'L. | | FMF | |
| NO. | REVISION | BY & DATE | CHK ANG | ±7'30" | FINISH | | PREV | |
| THIS DRAWING IN DESIGN AND DETAIL IS OUR PROPERTY AND MUST NOT BE USED EXCEPT IN CONNECTION WITH OUR WORK ALL RIGHTS OF DESIGN AND INVENTION ARE RESERVED THIS IS AN ELECTRONICALLY GENERATED DOCUMENT - DO NOT SCALE THIS PRINT | | | RFP | CAD FILE 102006_14LE | | SIZE | DRAWING NO. | PAGE 1 OF 1 |
| | | | DIST WP-LE | | | A | 102006-14LE | REV. |