

DRIVE TYPE

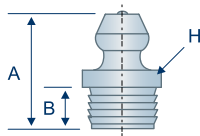
EXCEEDS 72 HR SALT SPRAY.
8,000 PSI MAX PRESSURE

SAE J534

Larger diameter shanks are better suited for heavy-duty applications. However, the strength of the seal varies depending on the mating material. G.L. Huyett recommends testing prior to use in such applications.

H1666Z3

Straight Drive Type
≈ 3/8" Drill Size
Standard Shank

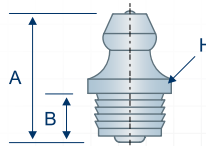


1666

NO BALL CHECK

H5036Z3

Straight Drive Type
≈ 3/8" Drill Size
Standard Shank



5036

PLEASE NOTE

DRILL SIZES PROVIDED ARE APPROXIMATIONS ONLY. THE EXACT DRILL SIZE FOR DRIVE TYPE FITTINGS MAY VARY WITH YOUR APPLICATION AND MATERIAL.

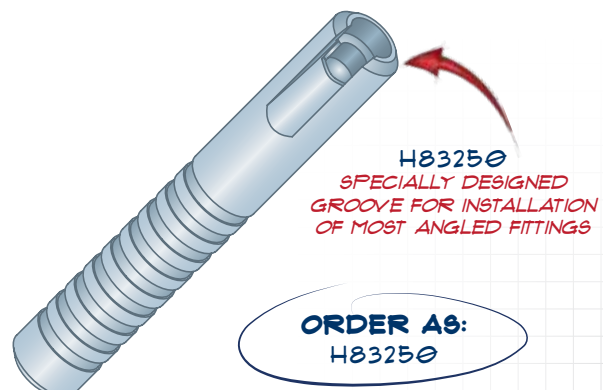
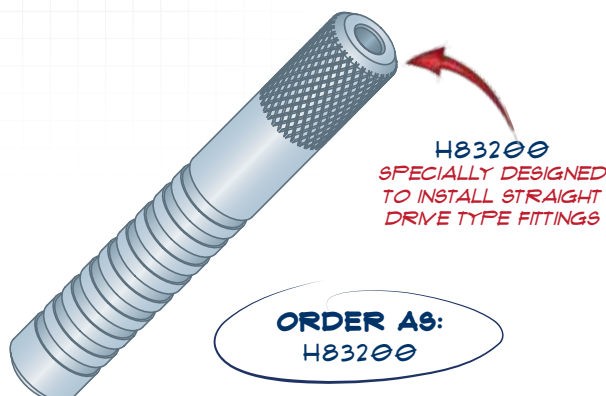
SAE AND G.L. HUYETT RECOMMEND TESTING TO ENSURE RELIABILITY IN THE FIELD.

DRIVE TYPE FITTINGS ARE NOT RECOMMENDED FOR HIGH-PRESSURE APPLICATIONS.

Item #	Drill Diameter	Angle (E)	Overall Length (A)	Shank Length (B)	Overall Width (D)	Swing Clearance (G)	Shoulder Diameter (H)	Ball Check?
H1666Z3	≈ 3/8" Drill	Straight	.58"	.22"	—	—	7/16"	No
H5036Z3	≈ 3/8" Drill	Straight	.66"	.25"	—	—	7/16"	Yes

DRIVE TOOLS

DRIVE TOOLS ARE DESIGNED TO EASE THE INSTALLATION OF DRIVE TYPE FITTINGS. THEIR SPECIAL DESIGN HOLDS AND GUIDES GREASE FITTINGS AS THEY ARE DRIVEN IN PLACE, REDUCING THE RISK OF DAMAGE. THEY ARE AVAILABLE FOR BOTH STRAIGHT AND ANGLED DRIVE TYPE FITTINGS.



Common Parts
Parts with this designation are in wide distribution.

Alemite®
Alemite® is a registered trademark of Alemite, LLC, Johnson City, TN, USA.

Lincoln Industrial®
Lincoln Industrial® is a registered trademark of Lincoln Industrial (USA) Corp.

John Deere®
John Deere® is a registered trademark of Deere and Company, Moline, Illinois.

All manufacturer names and numbers are for cross reference identification purposes only. In no way are we implying that our parts were made by the manufacturers listed. Prices, materials, dimensions, tolerances, designs and grades subject to change without notice. © G.L. Huyett 2019