

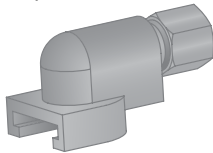
COUPLERS

BUTTON HEAD

Button head couplers are designed to push or pull over the head of a button head grease fitting. The slot opening for the standard button head couplers is designed for a 5/8" and 15.0 mm button head grease fitting. Heavy Duty button head couplers have a larger opening to accommodate a larger head.

H84420

Button Head Coupler
Push-on
1/8"-27 NPTF
3,000 psi

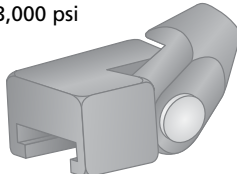


3,000 Psi

 FOR HAND EQUIPMENT

H84415

Button Head Coupler - Swivel
Push-on
1/8"-27 NPTF
3,000 psi

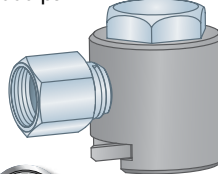


3,000 Psi

 FOR HAND EQUIPMENT

H84425

Button Head Coupler
Pull-on
1/8"-27 NPTF
6,000 psi

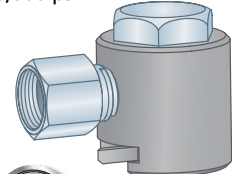


6,000 Psi

 FOR AIR / BATTERY EQUIP.

H84440

Button Head Coupler
Pull-on
M10 x 1.0
6,000 psi



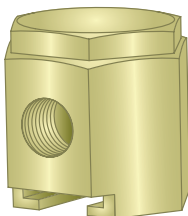
6,000 Psi

 FOR AIR / BATTERY EQUIP.

H84400

Button Head Coupler
Pull-on
7/16"-27 UNS
10,000 psi

UNS



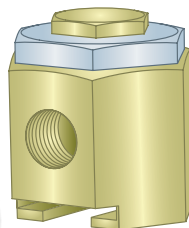
10,000 Psi

 FOR AIR / BATTERY EQUIP.

H84460

Hvy. Duty Button Head Coupler
Push-on / Pull-on
7/16"-27 UNS
10,000 psi

UNS



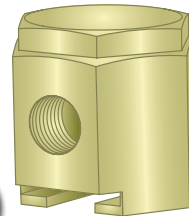
10,000 Psi

 FOR AIR / BATTERY EQUIP.

H84450

Hvy. Duty Button Head Coupler
Pull-on
7/16"-27 UNS
10,000 psi

UNS

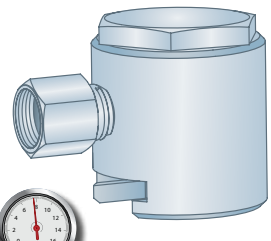


10,000 Psi

 FOR AIR / BATTERY EQUIP.



H84475

Hvy. Duty Button Head Coupler
Pull-on
1/8"-27" NPTF
7,500 psi



7,500 Psi

 FOR AIR / BATTERY EQUIP.

Item #	Description	Equipment Type	Thread	Working Pressure
H84420	Coupler - Button Head Push-on	Hand	1/8"-27 NPTF	3,000 psi
H84415	Coupler - Button Head Push-on	Hand	1/8"-27 NPTF	3,000 psi
H84425 	Coupler - Button Head Pull-on	Air / Battery	1/8"-27 NPTF	6,000 psi
H84440	Coupler - Button Head Pull-on	Air / Battery	M10 x 1.0	6,000 psi
H84400	Coupler - Button Head Pull-on	Air / Battery	7/16"-27 UNS	10,000 psi
H84460	Coupler - Heavy Duty Button Head Push-on/Pull-on	Air / Battery	7/16"-27 UNS	10,000 psi
H84450	Coupler - Heavy Duty Button Head Pull-on	Air / Battery	7/16"-27 UNS	10,000 psi
H84475 	Coupler - Heavy Duty Button Head Pull-on	Air / Battery	1/8"-27 NPTF	7,500 psi

SEE
PREVIOUS
PAGE

H84400, H84460 & H84450 BUTTON HEAD COUPLERS
POSSESS UNS THREADS AND REQUIRE A THREAD ADAPTER

UNS