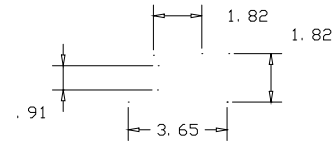
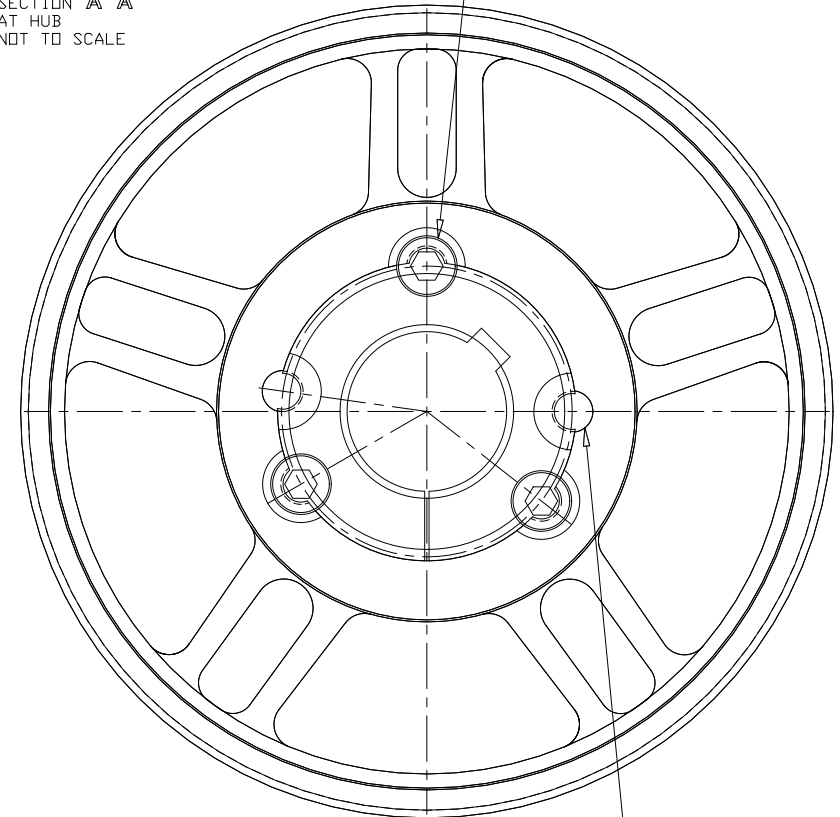


SECTION A-A  
AT HUB  
NOT TO SCALE



HEX HEAD CAP SCREWS  
FOR BUSHING INSTALLATION



FOR BUSHING REMOVAL

CERTIFIED

DFTR	REV	DATE	APP'D	REVISION

TOOTH TYPE: GT

BELT PITCH: 14M

PITCH DIA: 25.264

NO. OF TEETH: 144

MATERIAL: GRAY IRON

FINISH: 250 ✓

COATINGS: ANTI-RUST

THE MATERIALS AND INFORMATION, INCLUDING THE PRINCIPALS OF DESIGN PRESENTED, ARE THE EXCLUSIVE PROPERTY OF THE GATES RUBBER COMPANY AND ARE TO BE CONSIDERED AS CONFIDENTIAL INFORMATION. ACCORDINGLY, THIS INFORMATION IS SUBMITTED TO YOU WITH THE AGREEMENT THAT IT IS NOT TO BE REPRODUCED, COPIED, OR LOANED, IN PART OR IN WHOLE, NOR IS THE INFORMATION TO BE RELAYED TO ANY OTHER INDIVIDUAL OR COMPANY. ACCEPTANCE OF THIS DRAWING WILL BE CONSTRUED AS AN AGREEMENT TO THE ABOVE

THIS DRAWING IS A STOCK POWER TRANSMISSION COMPONENT. DETAILS SHOWN WHICH DO NOT AFFECT DRIVE FUNCTION MAY BE CHANGED WITHOUT ANY NOTIFICATION.

CUSTOMER NAME:

CUSTOMER DWG NO.:



**THE GATES RUBBER CO.**  
**DENVER, COLORADO**

PART DESCRIPTION: P144-14MGT-170 6050

GATES PART NUMBER: 77117144

APPROVED BY \_\_\_\_\_

DATE \_\_\_\_\_

REF. QUOTE NO.

DR. BY \_\_\_\_\_ DATE \_\_\_\_\_

CK. BY \_\_\_\_\_

APPD. BY \_\_\_\_\_

DRAWING NO.

77117144