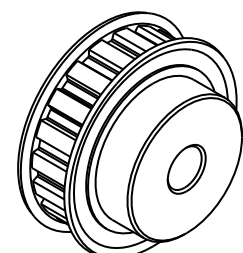
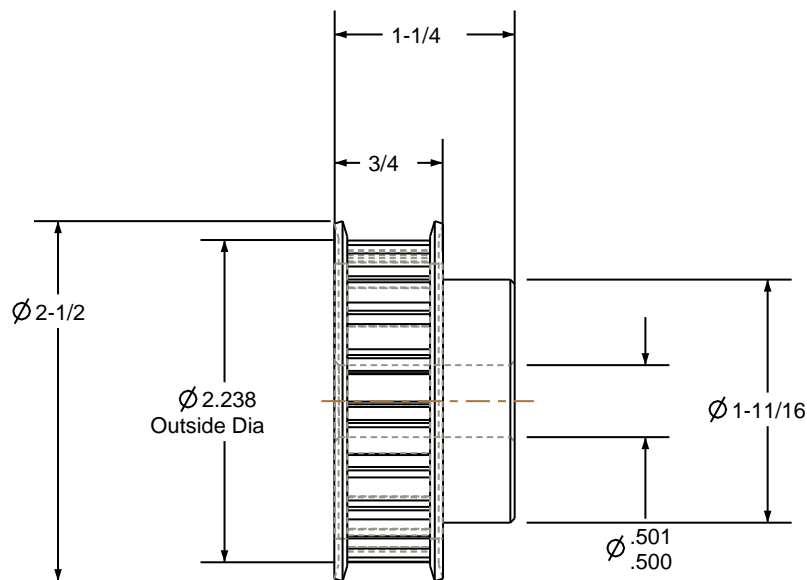
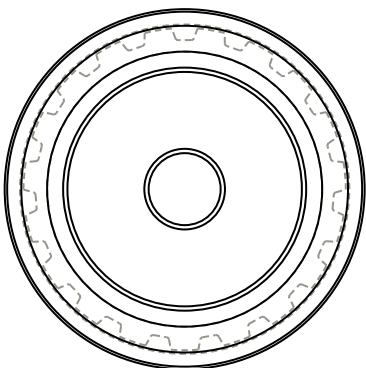



- NOTES:
- 1. Gates groove profile number: C-03750-19-S-0
  - 2. Mark Size: .110



SCALE 0.500



Pulley Data		Tolerances
Number of Grooves:	19	Decimals .X $\pm .015"$ .XX $\pm .010"$ .XXX $\pm .005"$ Fractions $\pm 1/64"$ Angles $\pm 1^\circ$ TIR        .003 Max
Belt Pitch:	3/8"	
Tooth Type:	L	
Pitch Diameter:	2.268	
Outside Diameter:	2.238	
Surface Finish:	125 Micro	This document is the property of Gates Corporation. It may not be reproduced in whole or in part or provided to third parties without written authorization from Gates Corporation. All rights are reserved including copyrights.
Flange Size:	19L-FS	

Rev	Revision	Date	By
Drafted By:	-	 Gates Corporation Denver, Colorado	
Checked By:	-		
Approved By:	-		
This drawing is a stock power transmission component. Details shown which do not affect drive function may be changed without any notification		Gates Part No: PB19L050	
Material: STEEL		Gates Product No: 7823-0346	
Finish: CLEAR ZINC		Drawing Number: 19L050-6FS6	