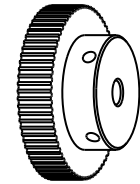
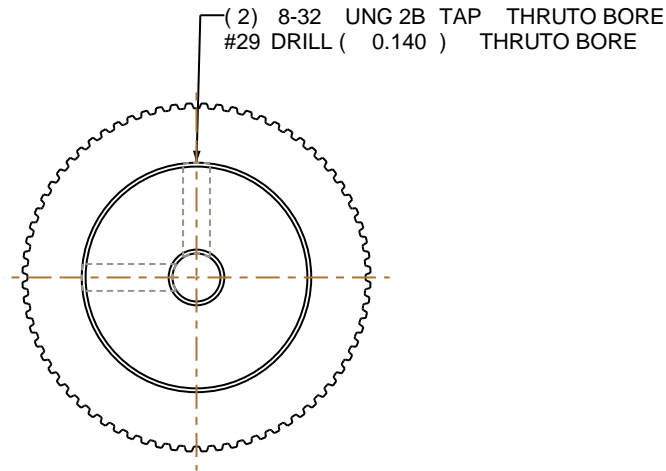
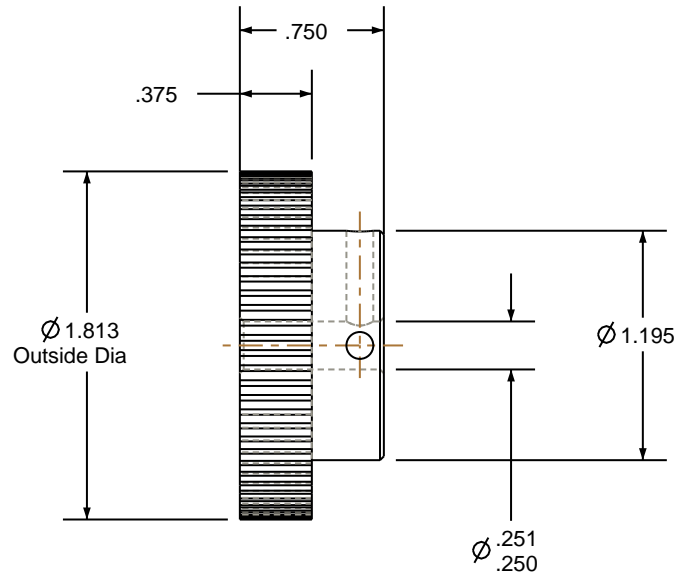


NOTES:

1. Gates groove profile number: K-00800-72-S-0
2. Mark Size: .125
3. Install set screws: 8-32



SCALE 0.500




Pulley Data		Tolerances
Number of Grooves:	72	Decimals .X ± .015" .XX ± .010" .XXX ± .005"
Belt Pitch:	0.080	Fractions ± 1/64"
Tooth Type:	MXL	Angles ± 1° TIR .003 Max
Pitch Diameter:	1.833	
Outside Diameter:	1.813	
Surface Finish:	125 Micro	
Flange Size:	N/A	
		This document is the property of Gates Corporation. It may not be reproduced in whole or in part or provided to third parties without written authorization from Gates Corporation. All rights are reserved including copyrights.

Drafted By:	-
Checked By:	-
Approved By:	-

This drawing is a stock power transmission component. Details shown which do not affect drive function may be changed without any notification

Material: ALUMINUM
Finish: GOLD ANODIZE

Rev	Revision	Date	By
 Gates Corporation Denver, Colorado			
Gates Part No: PB72MXL025			
Gates Product No: 7826-0272			
Drawing Number: 72MP025-6A3			