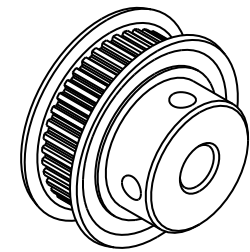
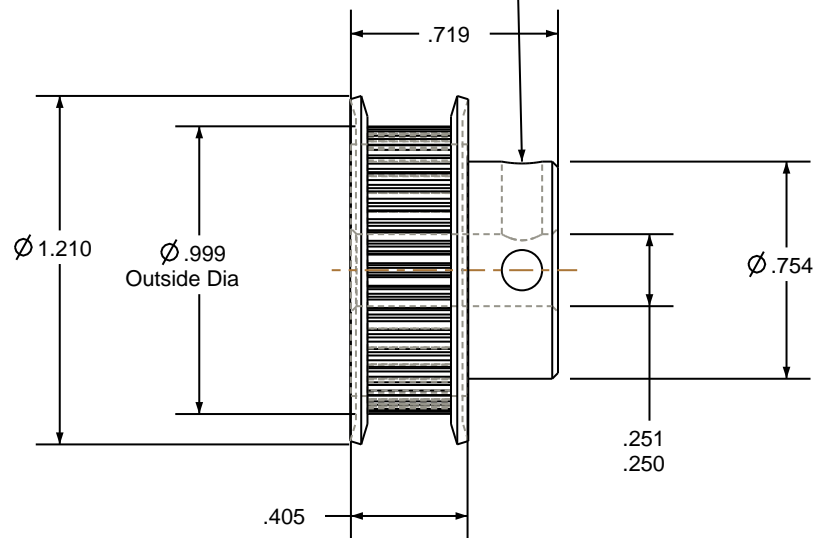


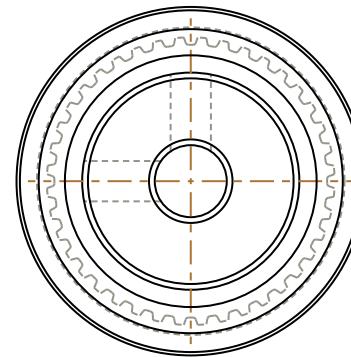
NOTES:

1. Gates groove profile number: K-00800-40-S-0
2. Mark Size: .100
3. Install set screws: 8-32

(2) 8-32 UNG 2B TAP THRU TO BORE
#29 DRILL (0.140) THRU TO BORE




SCALE 1.000



Pulley Data		Tolerances
Number of Grooves:	40	Decimals .X $\pm .015"$.XX $\pm .010"$.XXX $\pm .005"$ Fractions $\pm 1/64"$ Angles $\pm 1^\circ$ TIR .003 Max
Belt Pitch:	0.080	This document is the property of Gates Corporation. It may not be reproduced in whole or in part or provided to third parties without written authorization from Gates Corporation. All rights are reserved including copyrights.
Tooth Type:	MXL	
Pitch Diameter:	1.019	
Outside Diameter:	0.999	
Surface Finish:	125 Micro	
Flange Size:	40MP-FA	

Drafted By:	-
Checked By:	-
Approved By:	-
This drawing is a stock power transmission component. Details shown which do not affect drive function may be changed without any notification	
Material:	ALUMINUM
Finish:	GOLD ANODIZE

Rev	Revision	Date	By
 Gates Corporation Denver, Colorado			
Gates Part No: PB40MXL025			
Gates Product No: 7826-0140			
Drawing Number: 40MP025-6FA3			