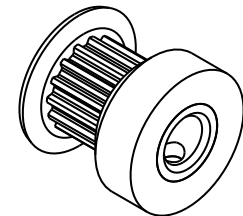
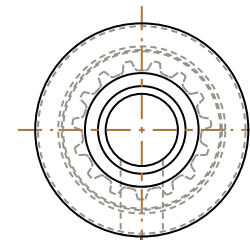
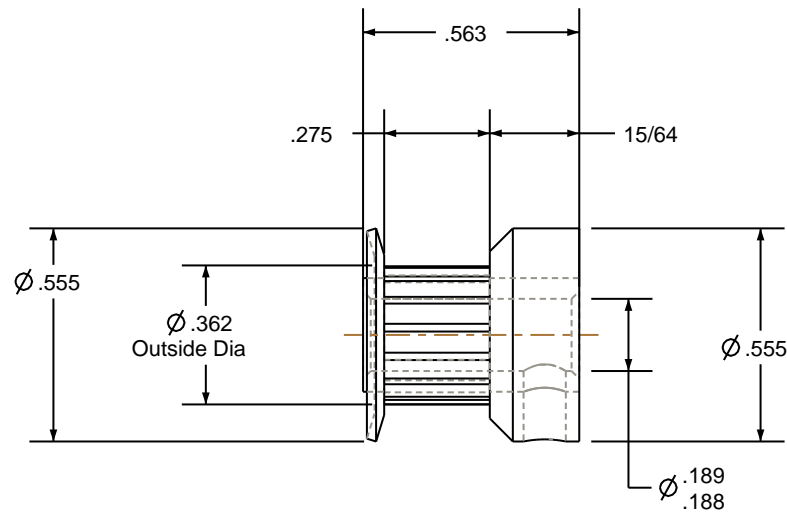


NOTES:

1. Gates groove profile number: K-00800-15-S-0
2. Mark Size: .050
3. Install set screws: 6-40



SCALE 1.500




#33 DRILL ( 0.110 )  $\nabla$  0.200 -( 1 ) HOLE 6-40 UNF- 2B TAP THRU

Pulley Data		Tolerances
Number of Grooves:	15	Decimals .X $\pm .015"$ .XX $\pm .010"$ .XXX $\pm .005"$ Fractions $\pm 1/64"$ Angles $\pm 1^\circ$ TIR .003 Max
Belt Pitch:	.080	
Tooth Type:	MXL	
Pitch Diameter:	0.382	
Outside Diameter:	0.362	
Surface Finish:	125 Micro	This document is the property of Gates Corporation. It may not be reproduced in whole or in part or provided to third parties without written authorization from Gates Corporation. All rights are reserved including copyrights.
Flange Size:	15MP-FA	

Drafted By: -  
Checked By: -  
Approved By: -

This drawing is a stock power transmission component. Details shown which do not affect drive function may be changed without any notification

Material: ALUMINUM  
Finish: CLEAR ANODIZE

Rev	Revision	Date	By
 Gates Corporation Denver, Colorado			
Gates Part No: PB15MXL025			
Gates Product No: 7826-0015			
Drawing Number: 15MP025-6CA2			