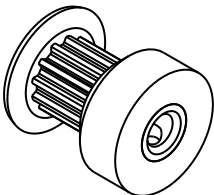
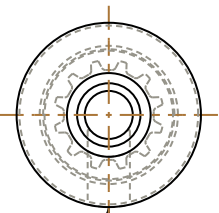
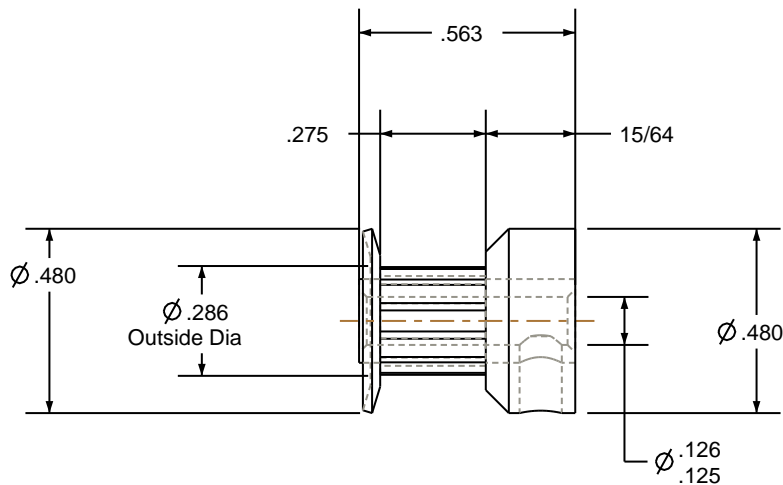


- NOTES:
- 1. Gates groove profile number: K-00800-12-S-0
  - 2. Mark Size: .050
  - 3. Install set screws: 4-40



SCALE 1.500



6-40 UNF- 2B TAP THRU  
#33 DRILL ( 0.110 )  $\nabla$  0.200 -( 1 ) HOLE

Pulley Data		Tolerances
Number of Grooves:	12	Decimals .X $\pm .015"$ .XX $\pm .010"$ .XXX $\pm .005"$ Fractions $\pm 1/64"$ Angles $\pm 1^\circ$ TIR .003 Max
Belt Pitch:	.080	This document is the property of Gates Corporation. It may not be reproduced in whole or in part or provided to third parties without written authorization from Gates Corporation. All rights are reserved including copyrights.
Tooth Type:	MXL	
Pitch Diameter:	0.306	
Outside Diameter:	0.286	
Surface Finish:	125 Micro	
Flange Size:	12MP-FA	

Rev	Revision	Date	By
Gates Corporation Denver, Colorado			
Gates Part No: PB12MXL025			
Gates Product No: 7826-0012			
Drawing Number: 12MP025-6CA1			

Drafted By:	-
Checked By:	-
Approved By:	-
This drawing is a stock power transmission component. Details shown which do not affect drive function may be changed without any notification	
Material:	ALUMINUM
Finish:	CLEAR ANODIZE