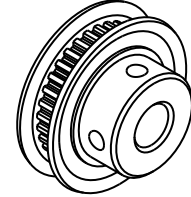
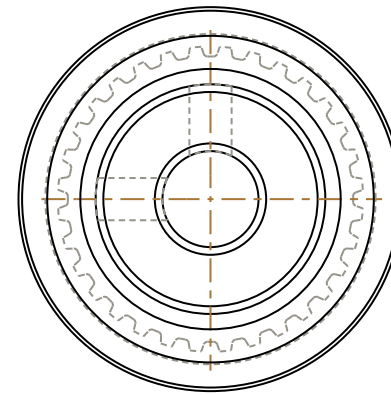
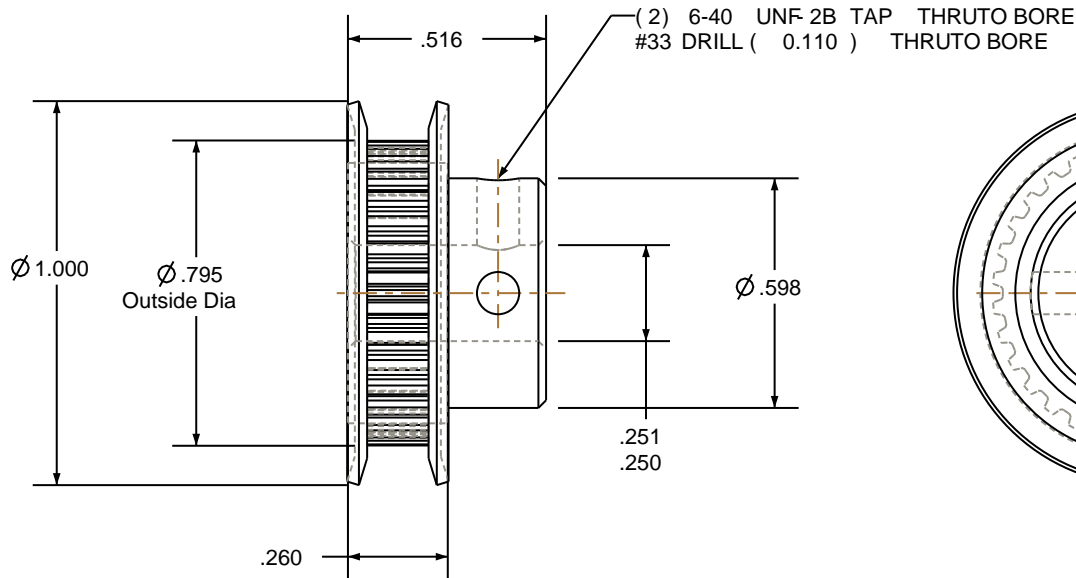


NOTES:

1. Gates groove profile number: K-00800-32-S-0
2. Mark Size: .100
3. Install set screws: 6-40



SCALE 1.000




Pulley Data		Tolerances
Number of Grooves:	32	Decimals
Belt Pitch:	0.080	.X $\pm .015"$
Tooth Type:	MXL	.XX $\pm .010"$
Pitch Diameter:	0.815	.XXX $\pm .005"$
Outside Diameter:	0.795	Fractions $\pm 1/64"$
Surface Finish:	125 Micro	Angles $\pm 1^\circ$
Flange Size:	32MP-FA	TIR .003 Max
		This document is the property of Gates Corporation. It may not be reproduced in whole or in part or provided to third parties without written authorization from Gates Corporation. All rights are reserved including copyrights.

Drafted By:	-
Checked By:	-
Approved By:	-

This drawing is a stock power transmission component. Details shown which do not affect drive function may be changed without any notification

Material:	ALUMINUM
Finish:	GOLD ANODIZE

Rev	Revision	Date	By
 <b>Gates Corporation</b> Denver, Colorado			
Gates Part No: PB32MXL012			
Gates Product No: 7826-0286			
Drawing Number: 32MP012-6FA3			