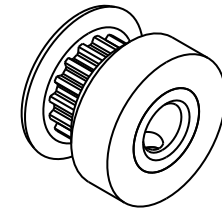
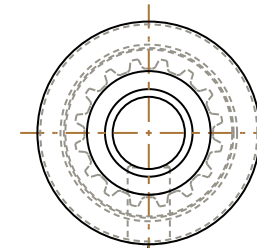
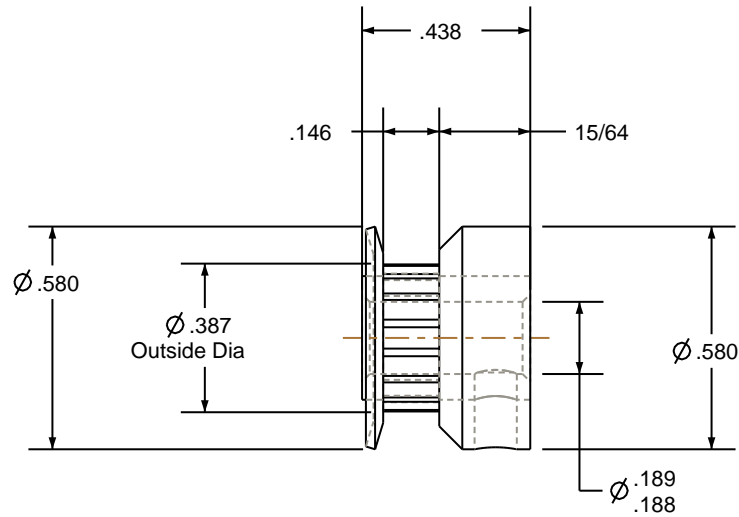


NOTES:

1. Gates groove profile number: K-00800-16-S-0
2. Mark Size: .050
3. Install set screws: 4-40




SCALE 1.500



#33 DRILL (0.110) ∇ 0.200 -(1) HOLE
6-40 UNF- 2B TAP THRU

Pulley Data		Tolerances
Number of Grooves:	16	Decimals .X $\pm .015"$.XX $\pm .010"$.XXX $\pm .005"$ Fractions $\pm 1/64"$ Angles $\pm 1^\circ$ TIR .003 Max
Belt Pitch:	.080	
Tooth Type:	MXL	
Pitch Diameter:	0.407	
Outside Diameter:	0.387	
Surface Finish:	125 Micro	This document is the property of Gates Corporation. It may not be reproduced in whole or in part or provided to third parties without written authorization from Gates Corporation. All rights are reserved including copyrights.
Flange Size:	16MP-FA	

Drafted By:	-
Checked By:	-
Approved By:	-
This drawing is a stock power transmission component. Details shown which do not affect drive function may be changed without any notification	
Material:	ALUMINUM
Finish:	CLEAR ANODIZE

Rev	Revision	Date	By
 Gates Corporation Denver, Colorado			
Gates Part No: PB16MXL012			
Gates Product No: 7826-0278			
Drawing Number: 16MP012-6CA2			