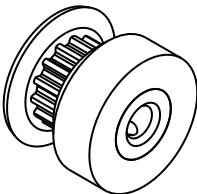
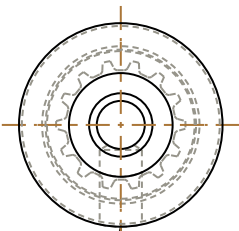
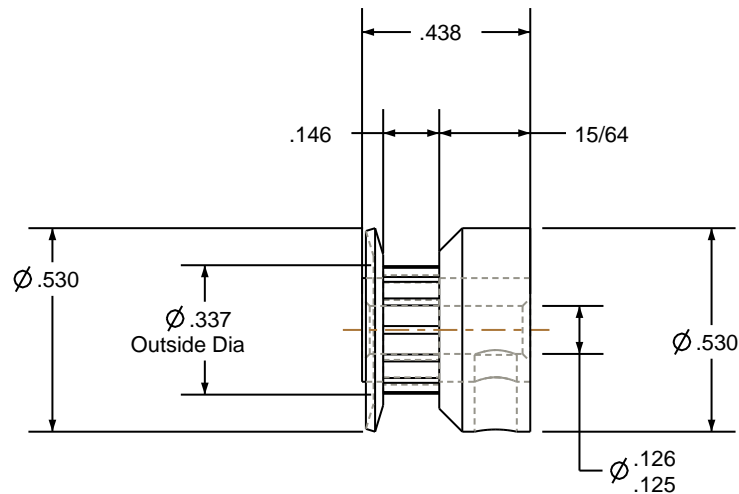


- NOTES:
- 1. Gates groove profile number: K-00800-14-S-0
 - 2. Mark Size: .050
 - 3. Install set screws: 4-40



SCALE 1.500



6-40 UNF- 2B TAP THRU
#33 DRILL (0.110) ∇ 0.200 -(1) HOLE

Pulley Data		Tolerances
Number of Grooves:	14	Decimals .X \pm .015" .XX \pm .010" .XXX \pm .005" Fractions \pm 1/64" Angles \pm 1° TIR .003 Max
Belt Pitch:	.080	This document is the property of Gates Corporation. It may not be reproduced in whole or in part or provided to third parties without written authorization from Gates Corporation. All rights are reserved including copyrights.
Tooth Type:	MXL	
Pitch Diameter:	0.357	
Outside Diameter:	0.337	
Surface Finish:	125 Micro	
Flange Size:	14MP-FA	

		Rev	Revision	Date
Drafted By:	-	Gates Corporation Denver, Colorado		
Checked By:	-			
Approved By:	-			
This drawing is a stock power transmission component. Details shown which do not affect drive function may be changed without any notification		Gates Part No: PB14MXL012		
Material: ALUMINUM	Gates Product No: 7826-0276			
Finish: CLEAR ANODIZE	Drawing Number: 14MP012-6CA1			