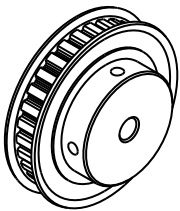
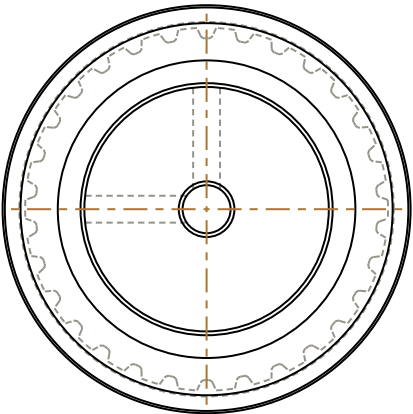
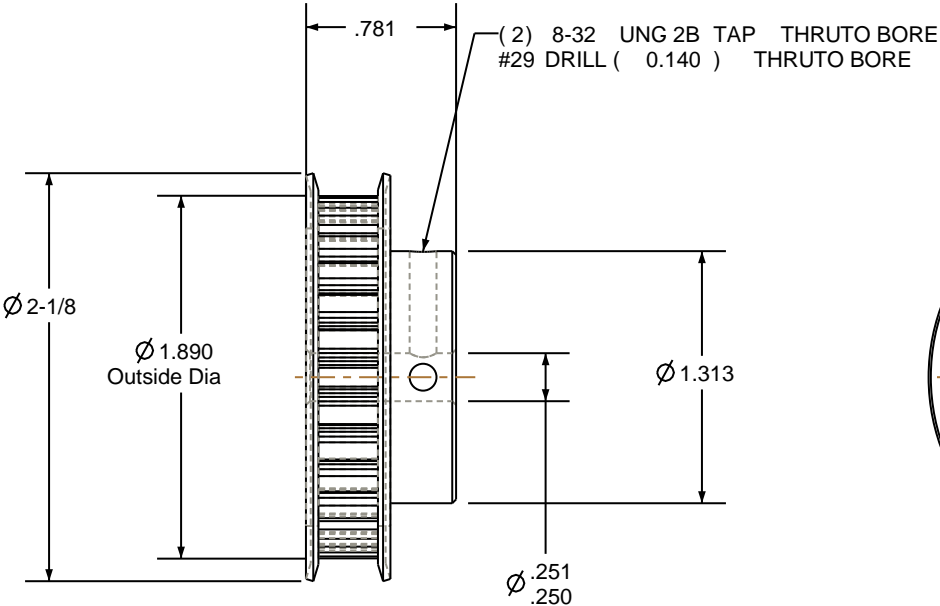



- NOTES:
- 1. Gates groove profile number: H-02000-30-S-0
  - 2. Mark Size: .100
  - 3. Install set screws: 8-32



SCALE 0.500



Pulley Data		Tolerances
Number of Grooves:	30	Decimals .X ± .015" .XX ± .010" .XXX ± .005"
Belt Pitch:	1/5	Fractions ± 1/64"
Tooth Type:	XL	Angles ± 1° TIR .003 Max
Pitch Diameter:	1.910	This document is the property of Gates Corporation. It may not be reproduced in whole or in part or provided to third parties without written authorization from Gates Corporation. All rights are reserved including copyrights.
Outside Diameter:	1.890	
Surface Finish:	125 Micro	
Flange Size:	30XL-FA	

		Rev	Revision	Date By
Drafted By:	-	 Gates Corporation Denver, Colorado		
Checked By:	-			
Approved By:	-			
This drawing is a stock power transmission component. Details shown which do not affect drive function may be changed without any notification		Gates Part No: PB30XL025		
Material: ALUMINUM		Gates Product No: 7823-1514		
Finish: CLEAR ANODIZE		Drawing Number: 30XL025-6FA3		