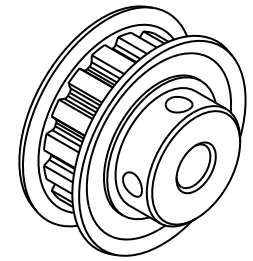
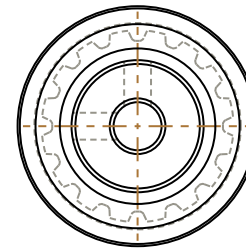
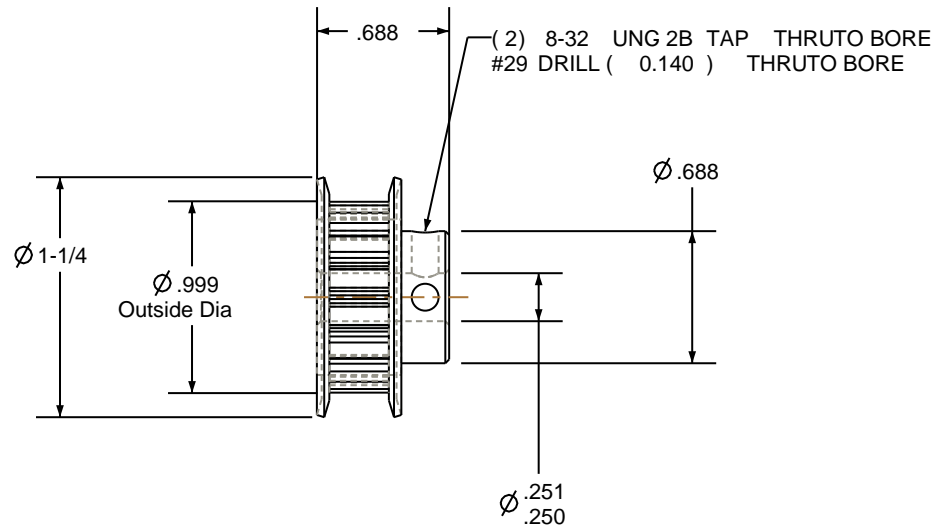


NOTES:

1. Gates groove profile number: H-02000-16-S-0
2. Mark Size: .050
3. Install set screws: 8-32



SCALE 1.000




| Pulley Data | | Tolerances |
|--------------------|-----------|---|
| Number of Grooves: | 16 | Decimals .X ± .015" .XX ± .010" .XXX ± .005" |
| Belt Pitch: | 1/5 | Fractions ± 1/64" |
| Tooth Type: | XL | Angles ± 1° TIR .003 Max |
| Pitch Diameter: | 1.019 | |
| Outside Diameter: | 0.999 | |
| Surface Finish: | 125 Micro | This document is the property of Gates Corporation. It may not be reproduced in whole or in part or provided to third parties without written authorization from Gates Corporation. All rights are reserved including copyrights. |
| Flange Size: | 16XL-FA | |
| | | |

| | |
|--------------|---|
| Drafted By: | - |
| Checked By: | - |
| Approved By: | - |

This drawing is a stock power transmission component. Details shown which do not affect drive function may be changed without any notification

Material: ALUMINUM
Finish: CLEAR ANODIZE

| Rev | Revision | Date | By |
|---|----------|------|----|
| | | | |
| | | | |
| | | | |
|  Gates Corporation Denver, Colorado | | | |
| Gates Part No: PB16XL025 | | | |
| Gates Product No: 7823-1506 | | | |
| Drawing Number: 16XL025-6FA3 | | | |