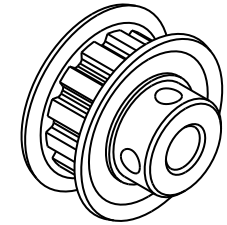
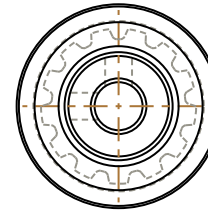
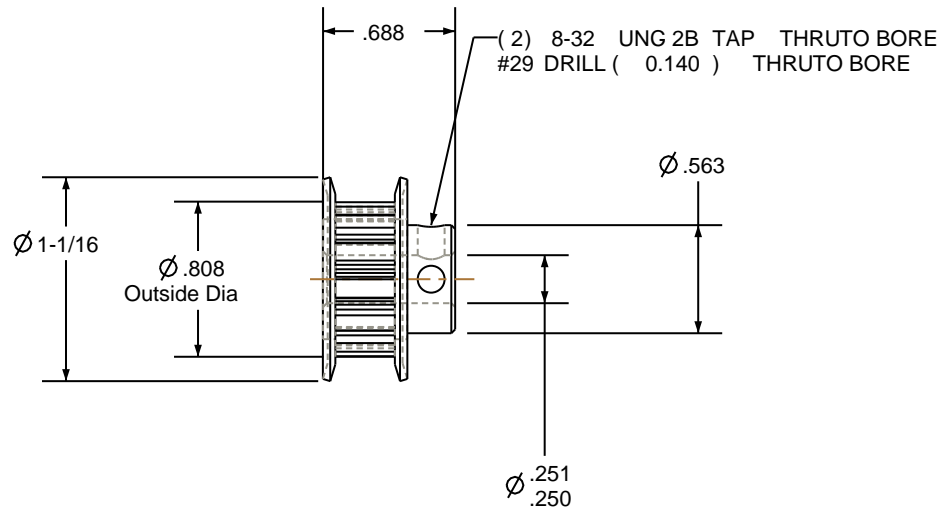


NOTES:

1. Gates groove profile number: H-02000-13-S-0
2. Mark Size: .050
3. Install set screws: 8-32



SCALE 1.000




Pulley Data		Tolerances
Number of Grooves:	13	Decimals .X ± .015" .XX ± .010" .XXX ± .005"
Belt Pitch:	1/5	Fractions ± 1/64"
Tooth Type:	XL	Angles ± 1° TIR .003 Max
Pitch Diameter:	0.828	
Outside Diameter:	0.808	
Surface Finish:	125 Micro	This document is the property of Gates Corporation. It may not be reproduced in whole or in part or provided to third parties without written authorization from Gates Corporation. All rights are reserved including copyrights.
Flange Size:	13XL-FA	

Drafted By:	-
Checked By:	-
Approved By:	-

This drawing is a stock power transmission component. Details shown which do not affect drive function may be changed without any notification

Material:	ALUMINUM
Finish:	CLEAR ANODIZE

Rev	Revision	Date	By
 <b>Gates Corporation</b> <b>Denver, Colorado</b>			
Gates Part No: PB13XL025			
Gates Product No: 7823-1503			
Drawing Number: 13XL025-6FA3			