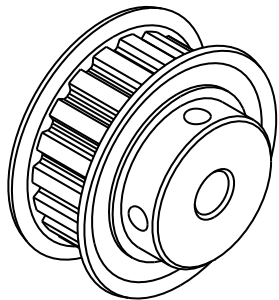
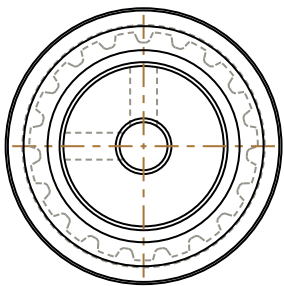
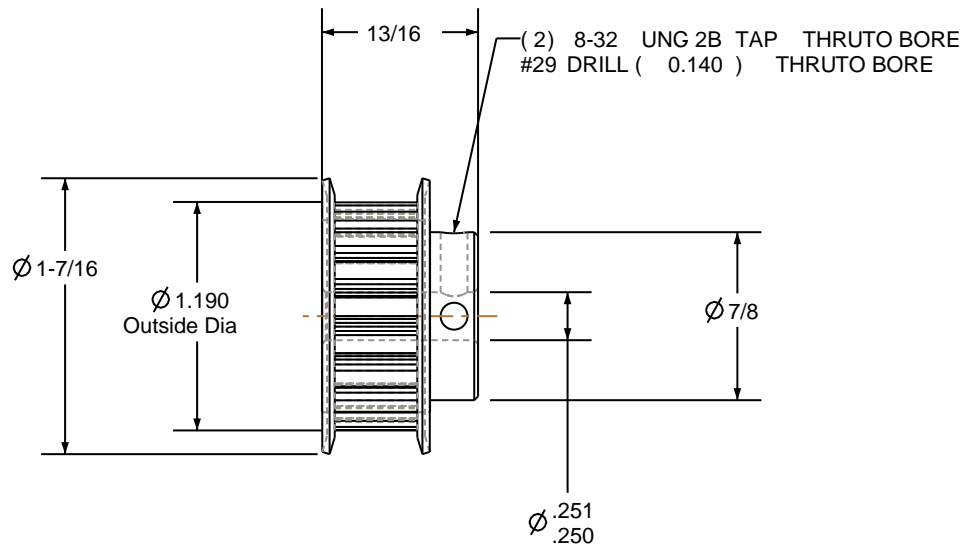



- NOTES:
- 1. Gates groove profile number: H-02000-19-S-0
 - 2. Mark Size: .075
 - 3. Install set screws: 8-32



SCALE 1.000



Pulley Data		Tolerances
Number of Grooves:	19	Decimals
Belt Pitch:	1/5	.X ± .015"
Tooth Type:	XL	.XX ± .010"
Pitch Diameter:	1.210	.XXX ± .005"
Outside Diameter:	1.190	Fractions ± 1/64"
Surface Finish:	125 Micro	Angles ± 1°
Flange Size:	19XL-FA	TIR .003 Max
		This document is the property of Gates Corporation. It may not be reproduced in whole or in part or provided to third parties without written authorization from Gates Corporation. All rights are reserved including copyrights.

		Rev	Revision	Date By
Drafted By:	-	 Gates Corporation Denver, Colorado		
Checked By:	-			
Approved By:	-			
This drawing is a stock power transmission component. Details shown which do not affect drive function may be changed without any notification		Gates Part No: PB19XL037		
Material: ALUMINUM		Gates Product No: 7823-1517		
Finish: CLEAR ANODIZE		Drawing Number: 19XL037-6FA3		