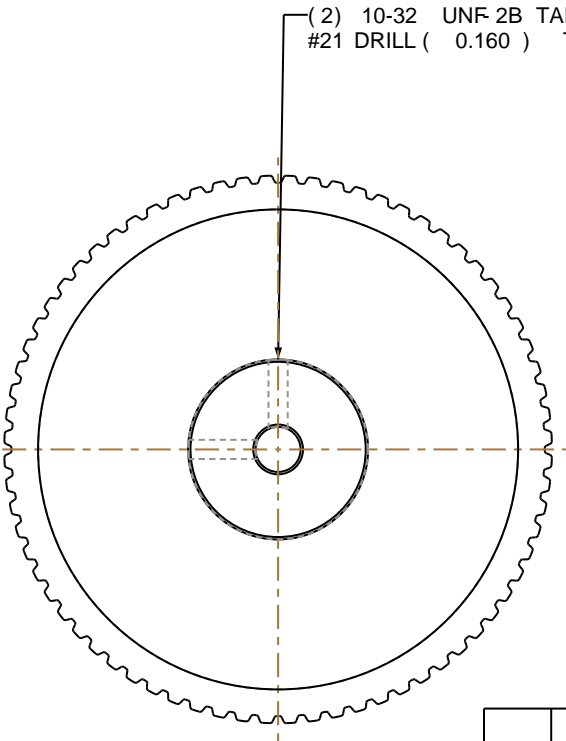
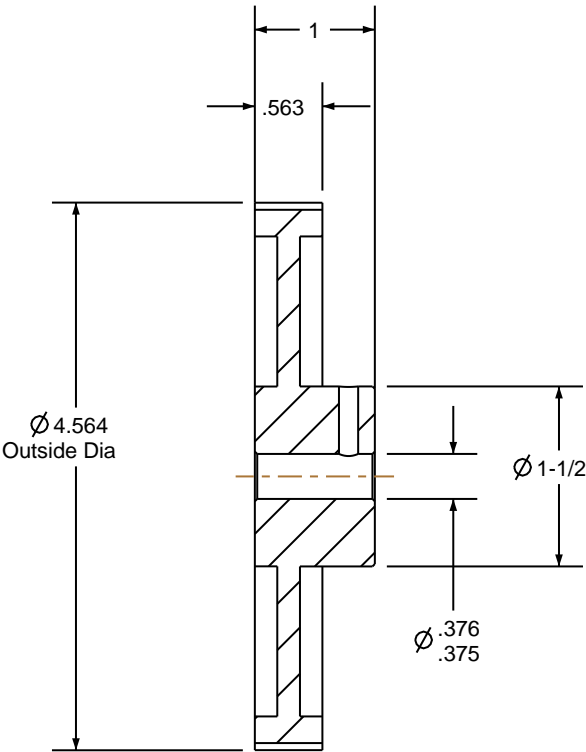
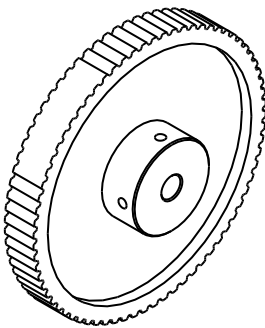


- NOTES:
- 1. Gates groove profile number: H-02000-72-S-0
  - 2. Mark Size: .125
  - 3. Install set screws: 10-32




(2) 10-32 UNF 2B TAP THRU TO BORE  
#21 DRILL ( .0160 ) THRU TO BORE



SCALE 0.375

Pulley Data		Tolerances
Number of Grooves:	72	Decimals .X $\pm .015"$ .XX $\pm .010"$ .XXX $\pm .005"$ Fractions $\pm 1/64"$ Angles $\pm 1^\circ$ TIR .003 Max
Belt Pitch:	1/5"	This document is the property of Gates Corporation. It may not be reproduced in whole or in part or provided to third parties without written authorization from Gates Corporation. All rights are reserved including copyrights.
Tooth Type:	XL	
Pitch Diameter:	4.584	
Outside Diameter:	4.564	
Surface Finish:	125 Micro	
Flange Size:	N/A	

		Rev	Revision	Date	By
Drafted By:	-	<div></div> <div>Gates Corporation Denver, Colorado</div>			
Checked By:	-				
Approved By:	-				
This drawing is a stock power transmission component. Details shown which do not affect drive function may be changed without any notification		Gates Part No: PB72XL037			
Material: ALUMINUM		Gates Product No: 7823-0226			
Finish: CLEAR ANODIZE		Drawing Number: 72XL037-6WA5			