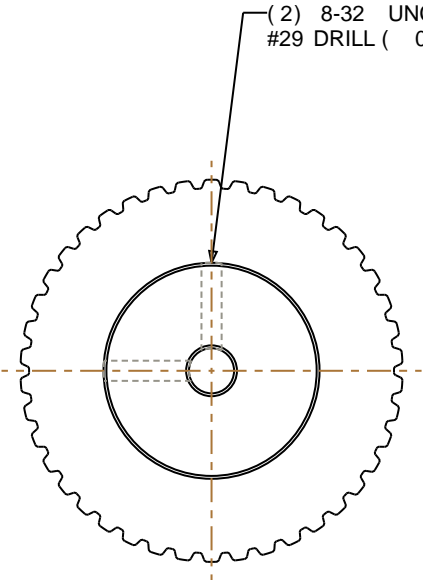
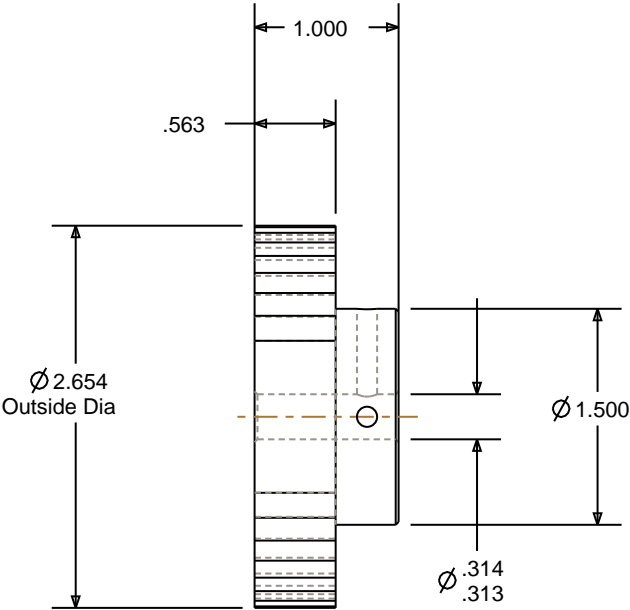
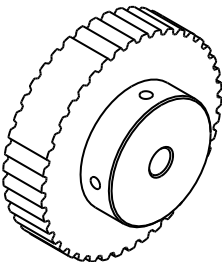


- NOTES:
1. Gates groove profile number:

H-02000-42-S-0
2. Install set screws:


8-32
3. Mark Size:

.125



SCALE 0.500

Pulley Data		Tolerances
Number of Grooves:	42	Decimals .X ± .015" .XX ± .010" .XXX ± .005" Fractions ± 1/64" Angles ± 1° TIR .003 Max
Belt Pitch:	1/5"	
Tooth Type:	XL	
Pitch Diameter:	2.674	
Outside Diameter:	2.654	
Surface Finish:	125 Micro	This document is the property of Gates Corporation. It may not be reproduced in whole or in part or provided to third parties without written authorization from Gates Corporation. All rights are reserved including copyrights.
Flange Size:	N/A	

Rev	Revision	Date	By
Drafted By:		-	
Checked By:		-	
Approved By:		-	
This drawing is a stock power transmission component. Details shown which do not affect drive function may be changed without any notification		 Gates Corporation Denver, Colorado	
Material: ALUMINUM		Gates Part No: PB42XL037	
Finish: CLEAR ANODIZE		Gates Product No: 7823-0206	
		Drawing Number: 42XL037-6A4	