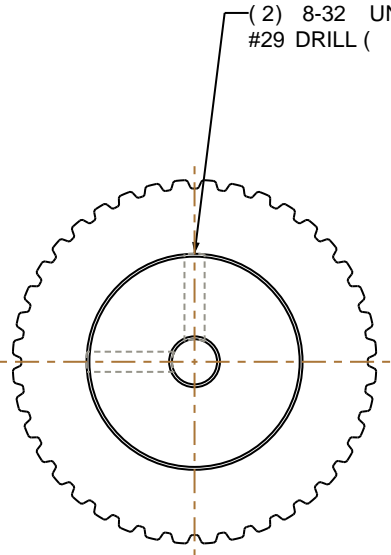
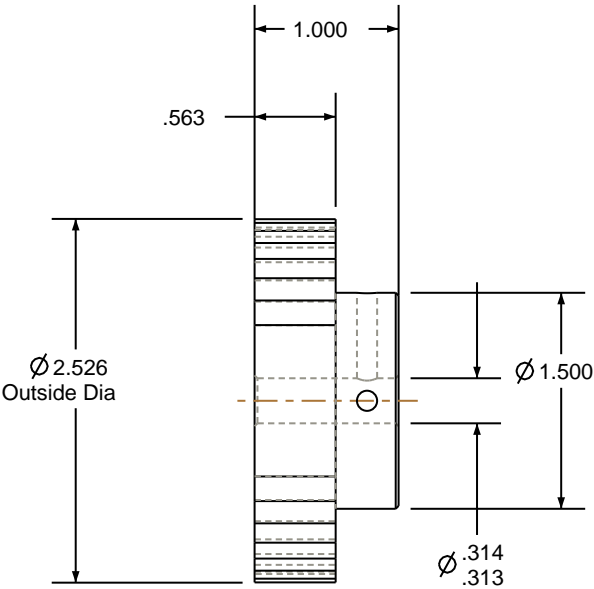
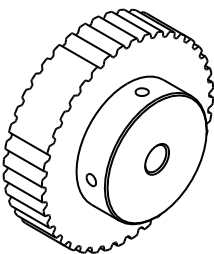


- NOTES:
1. Gates groove profile number:

H-02000-40-S-0
2. Install set screws:

8-32
3. Mark Size:

.115



( 2 ) 8-32 UNG 2B TAP THRU TO BORE

#29 DRILL ( 0.140 ) THRU TO BORE

SCALE 0.500

Pulley Data		Tolerances
Number of Grooves:	40	Decimals .X ± .015" .XX ± .010" .XXX ± .005" Fractions ± 1/64" Angles ± 1° TIR .003 Max
Belt Pitch:	1/5"	
Tooth Type:	XL	
Pitch Diameter:	2.546	
Outside Diameter:	2.526	
Surface Finish:	125 Micro	This document is the property of Gates Corporation. It may not be reproduced in whole or in part or provided to third parties without written authorization from Gates Corporation. All rights are reserved including copyrights.
Flange Size:	N/A	

Rev	Revision	Date	By
<div><div></div><div>Gates Corporation Denver, Colorado</div></div>			
Drafted By:		-	
Checked By:		-	
Approved By:		-	
This drawing is a stock power transmission component. Details shown which do not affect drive function may be changed without any notification		Gates Part No: PB40XL037	
Material: ALUMINUM		Gates Product No: 7823-0201	
Finish: CLEAR ANODIZE		Drawing Number: 40XL037-6A4	