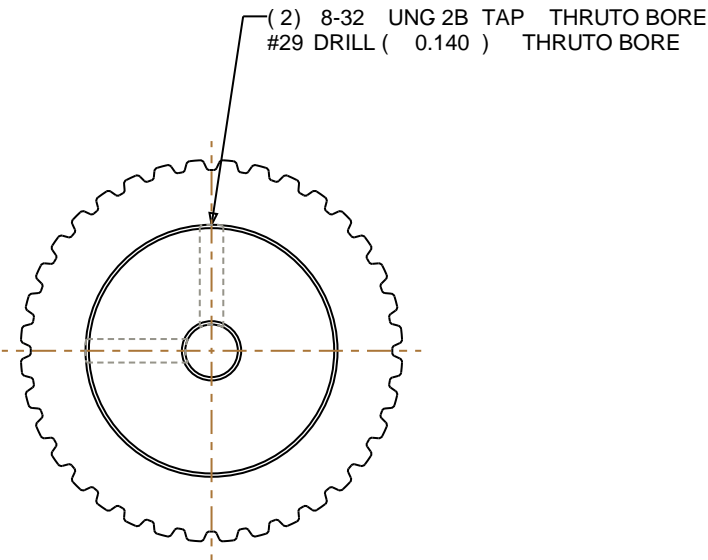
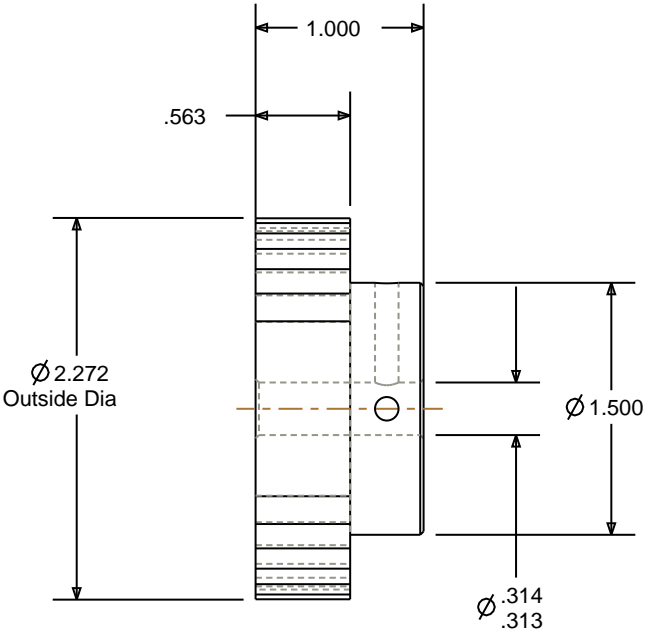
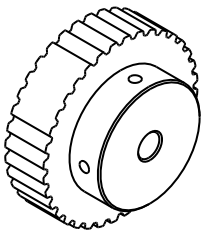


- NOTES:
1. Gates groove profile number:

H-02000-36-S-0
2. Install set screws:

8-32
3. Mark Size:

.100



SCALE 0.500

Pulley Data		Tolerances
Number of Grooves:	36	Decimals .X ± .015" .XX ± .010" .XXX ± .005" Fractions ± 1/64" Angles ± 1° TIR .003 Max
Belt Pitch:	1/5"	This document is the property of Gates Corporation. It may not be reproduced in whole or in part or provided to third parties without written authorization from Gates Corporation. All rights are reserved including copyrights.
Tooth Type:	XL	
Pitch Diameter:	2.292	
Outside Diameter:	2.272	
Surface Finish:	125 Micro	
Flange Size:	N/A	

Rev	Revision	Date	By
<div><div></div><div>Gates Corporation Denver, Colorado</div></div>			
Gates Part No: PB36XL037		Gates Product No: 7823-0196	
Drawing Number: 36XL037-6A4			

Drafted By:

Checked By:

Approved By:

-

-

-

This drawing is a stock power transmission component. Details shown which do not affect drive function may be changed without any notification