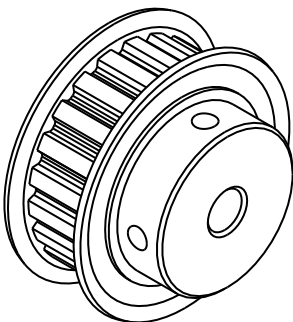
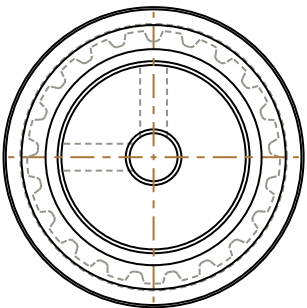
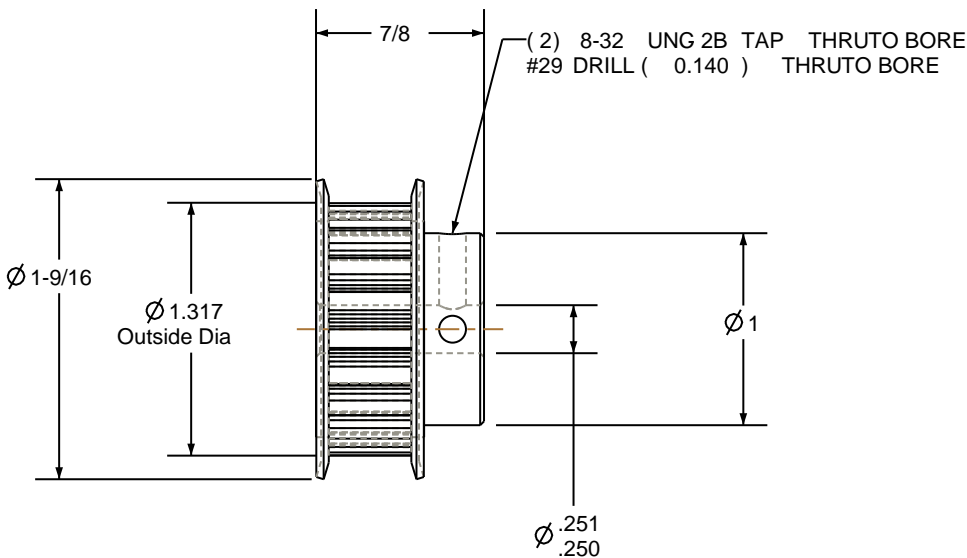



- NOTES:
- 1. Gates groove profile number: H-02000-21-S-0
  - 2. Mark Size: .100
  - 3. Install set screws: 8-32



SCALE 1.000



Pulley Data		Tolerances
Number of Grooves:	21	Decimals .X ± .015" .XX ± .010" .XXX ± .005"
Belt Pitch:	1/5	Fractions Angles TIR ± 1° .003 Max
Tooth Type:	XL	
Pitch Diameter:	1.337	
Outside Diameter:	1.317	
Surface Finish:	125 Micro	This document is the property of Gates Corporation. It may not be reproduced in whole or in part or provided to third parties without written authorization from Gates Corporation. All rights are reserved including copyrights.
Flange Size:	21XL-FS	

Rev	Revision	Date	By
Drafted By:		-	
Checked By:		-	
Approved By:		-	
This drawing is a stock power transmission component. Details shown which do not affect drive function may be changed without any notification		 Gates Corporation Denver, Colorado	
		Gates Part No: PB21XL037	
		Gates Product No: 7823-0156	
		Drawing Number: 21XL037-6FS3	
Material: STEEL			
Finish: CLEAR ZINC			