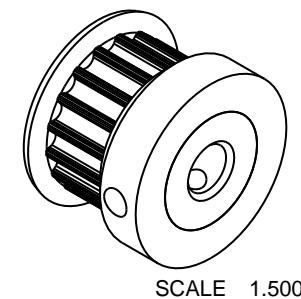
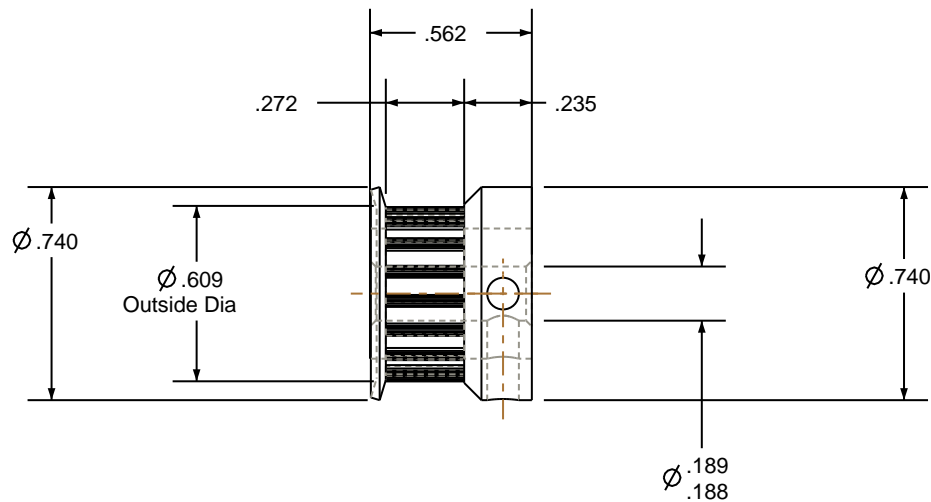
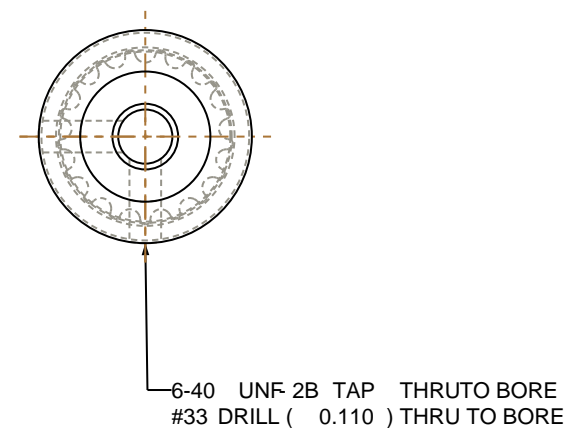



- NOTES:
- 1. Gates groove profile number: GA-01180-17-S-0
 - 2. Mark Size: .050
 - 3. Install set screws: 6-40



SCALE 1.500



Pulley Data		Tolerances
Number of Grooves:	17	Decimals .X $\pm .015"$.XX $\pm .010"$.XXX $\pm .005"$ Fractions $\pm 1/64"$ Angles $\pm 1^\circ$ TIR .003 Max
Belt Pitch:	3 mm	This document is the property of Gates Corporation. It may not be reproduced in whole or in part or provided to third parties without written authorization from Gates Corporation. All rights are reserved including copyrights.
Tooth Type:	PGGT	
Pitch Diameter:	0.639	
Outside Diameter:	0.609	
Surface Finish:	125 Micro	
Flange Size:	22MP-FA	

Rev		Revision	Date	By
Drafted By:		-		
Checked By:		-		
Approved By:		-		
This drawing is a stock power transmission component. Details shown which do not affect drive function may be changed without any notification		 Gates Corporation Denver, Colorado		
Material: ALUMINUM		Gates Part No: 3MR-17S-06		
Finish: CLEAR ANODIZE		Gates Product No: 7843-6048		
		Drawing Number: 17-3P06-6CA2		