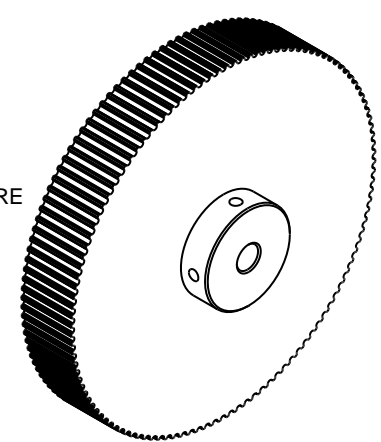
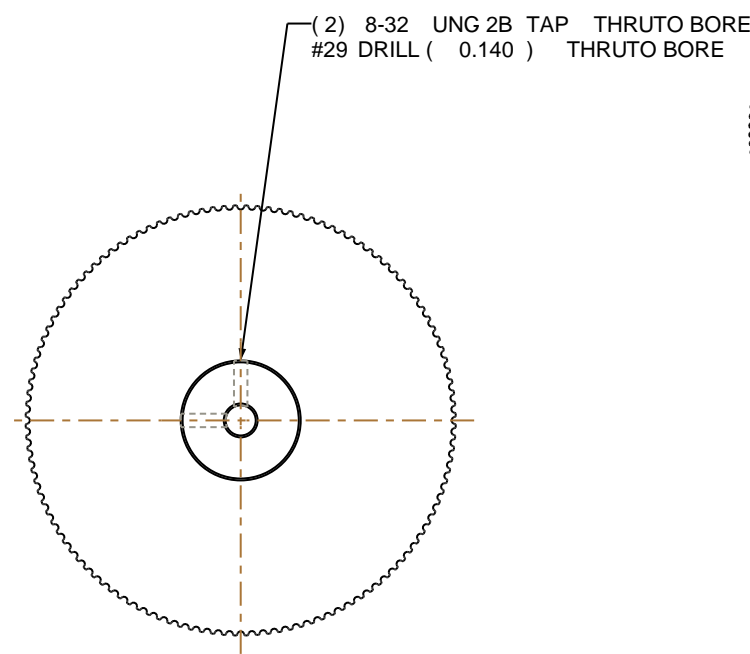
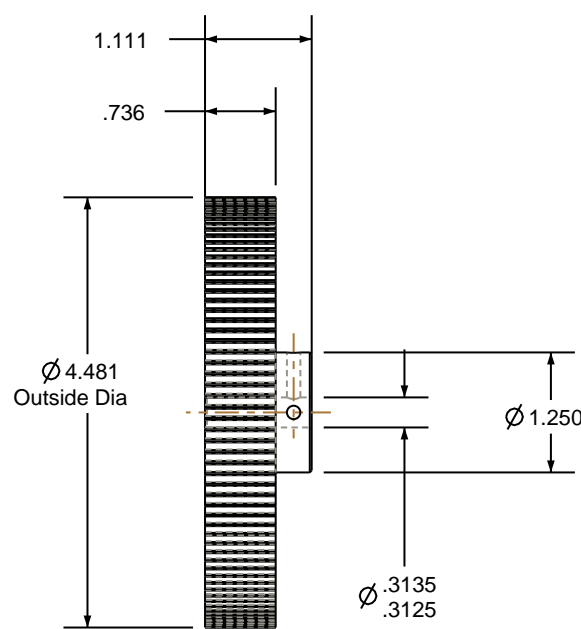



- NOTES:
- 1. Gates groove profile number: GA-01180-120-S-0
 - 2. Mark Size: .125
 - 3. Install set screws: 8-32



SCALE 0.500

Pulley Data		Tolerances
Number of Grooves:	120	Decimals .X ± .015" .XX ± .010" .XXX ± .005" Fractions ± 1/64" Angles ± 1° TIR .003 Max
Belt Pitch:	3 mm	
Tooth Type:	PGGT	
Pitch Diameter:	4.511	
Outside Diameter:	4.481	
Surface Finish:	125 Micro	
Flange Size:	NONE	This document is the property of Gates Corporation. It may not be reproduced in whole or in part or provided to third parties without written authorization from Gates Corporation. All rights are reserved including copyrights.

Rev	Revision	Date	By
<div> Gates Corporation Denver, Colorado</div>			
Gates Part No: 3MR-120S-15		Gates Product No: 7843-6090	
Material: ALUMINUM		Drawing Number: 120-3P15-6A4	
Finish: CLEAR ANODIZE			

Drafted By: -
Checked By: -
Approved By: -

This drawing is a stock power transmission component. Details shown which do not affect drive function may be changed without any notification