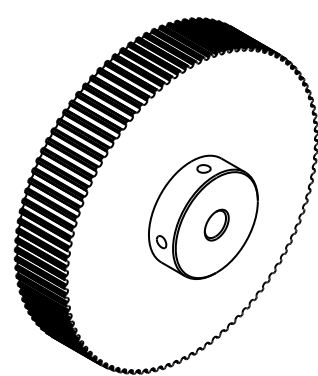
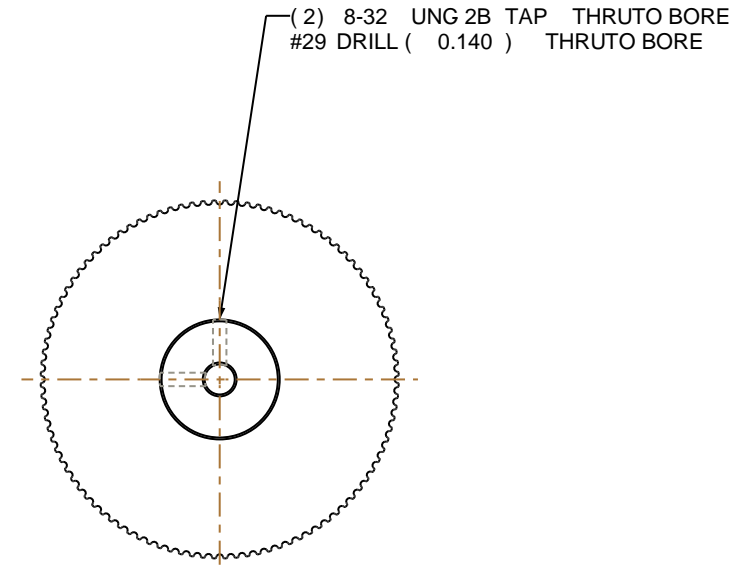
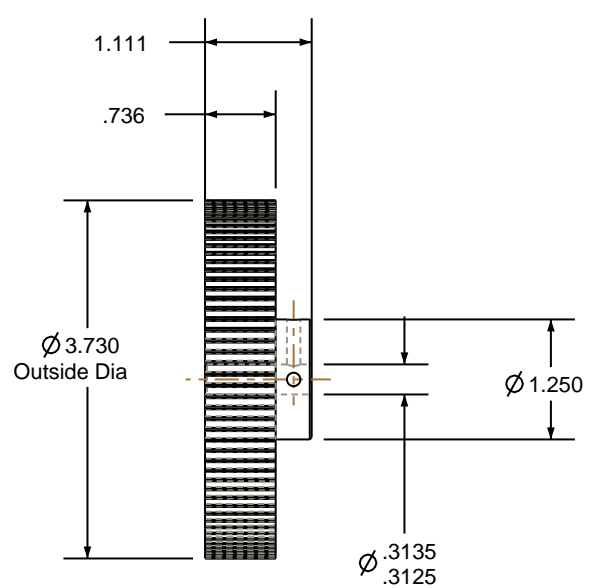



- NOTES:
- 1. Gates groove profile number: GA-01180-100-S-0
 - 2. Mark Size: .125
 - 3. Install set screws: 8-32



SCALE 0.500

Pulley Data		Tolerances
Number of Grooves:	100	Decimals .X ± .015" .XX ± .010" .XXX ± .005" Fractions ± 1/64" Angles ± 1° TIR .003 Max
Belt Pitch:	3 mm	This document is the property of Gates Corporation. It may not be reproduced in whole or in part or provided to third parties without written authorization from Gates Corporation. All rights are reserved including copyrights.
Tooth Type:	PGGT	
Pitch Diameter:	3.760	
Outside Diameter:	3.730	
Surface Finish:	125 Micro	
Flange Size:	NONE	

		Rev	Revision	Date	By
Drafted By:	-	<div></div> <div>Gates Corporation Denver, Colorado</div>			
Checked By:	-				
Approved By:	-				
This drawing is a stock power transmission component. Details shown which do not affect drive function may be changed without any notification		Gates Part No: 3MR-100S-15			
Material: ALUMINUM		Gates Product No: 7843-6089			
Finish: CLEAR ANODIZE		Drawing Number: 100-3P15-6A4			