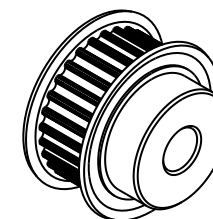
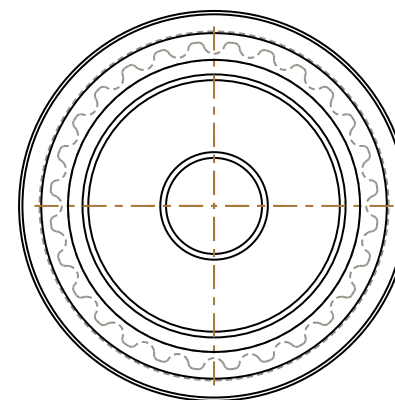
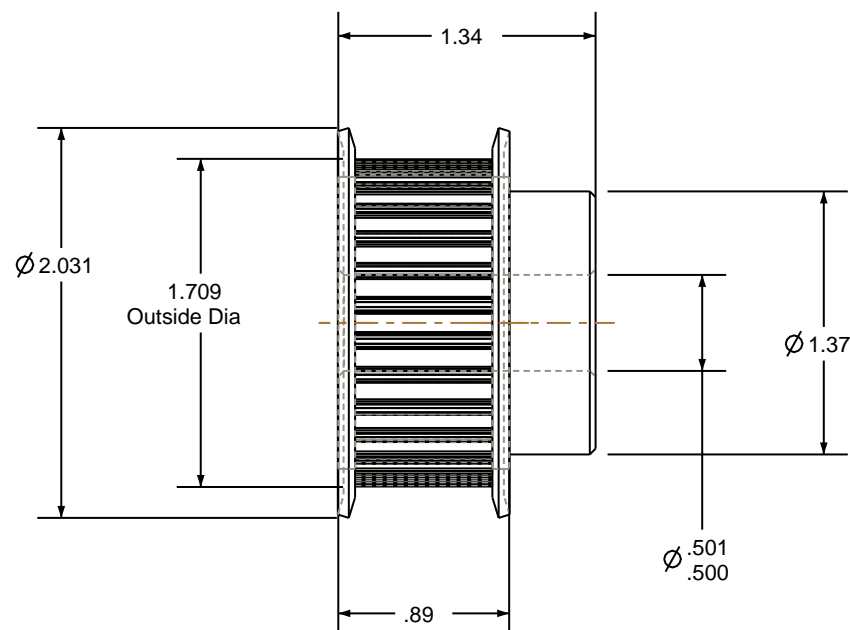



1. Gates groove profile number: GB-01970-28-S-0
2. Mark Size: .110



SCALE 0.500



Pulley Data		Tolerances
Number of Grooves:	28	Decimals .X $\pm .015"$ .XX $\pm .010"$ .XXX $\pm .005"$ Fractions $\pm 1/64"$ Angles $\pm 1^\circ$ TIR        .003 Max
Belt Pitch:	5 mm	
Tooth Type:	PGGT	
Pitch Diameter:	1.754	
Outside Diameter:	1.709	This document is the property of Gates Corporation. It may not be reproduced in whole or in part or provided to third parties without written authorization from Gates Corporation. All rights are reserved including copyrights.
Surface Finish:	125 Micro	
Flange Size:	15L-FS	

		Rev	Revision	Date By
Drafted By:	-	 <b>Gates Corporation</b> <b>Denver, Colorado</b>		
Checked By:	-			
Approved By:	-			
This drawing is a stock power transmission component. Details shown which do not affect drive function may be changed without any notification		<b>Gates Part No: P28-5MGT-15-MPB</b>		
<b>Material: STEEL</b>		<b>Gates Product No: 7709-3028</b>		
<b>Finish: CLEAR ZINC</b>		<b>Drawing Number: P28-5MGT-15-MPB</b>		