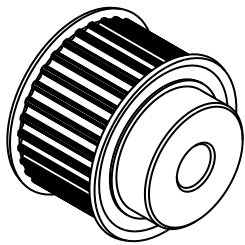
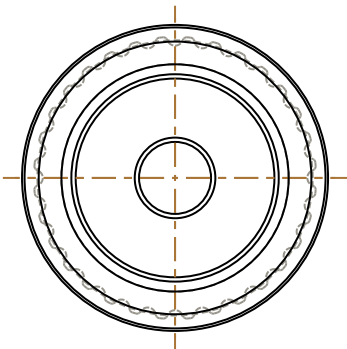
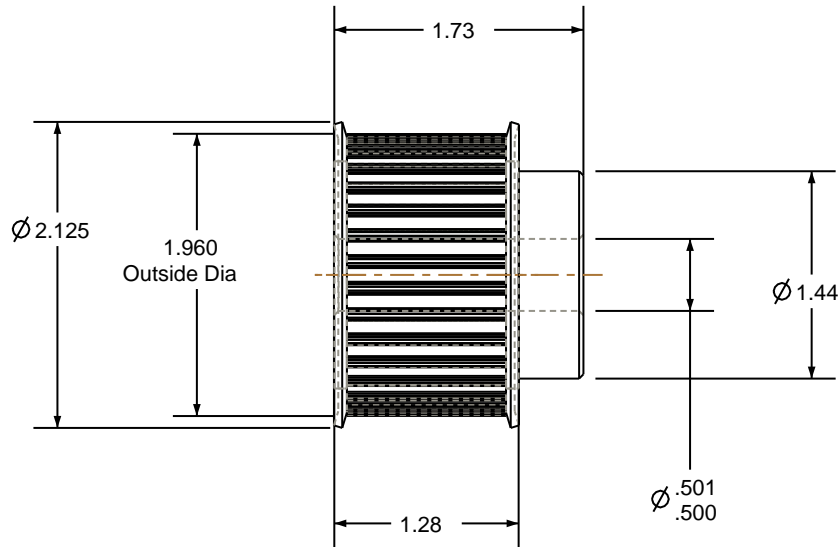


- NOTES:
- 1. Gates groove profile number: GB-01970-32-S-0
 - 2. Mark Size: .110




SCALE 0.500



Pulley Data		Tolerances
Number of Grooves:	32	Decimals
Belt Pitch:	5 mm	.X ± .015"
Tooth Type:	PGGT	.XX ± .010"
Pitch Diameter:	2.005	.XXX ± .005"
Outside Diameter:	1.960	Fractions ± 1/64"
Surface Finish:	125 Micro	Angles ± 1°
Flange Size:	16L-FS	TIR .003 Max
		This document is the property of Gates Corporation. It may not be reproduced in whole or in part or provided to third parties without written authorization from Gates Corporation. All rights are reserved including copyrights.

Drafted By:	-
Checked By:	-
Approved By:	-
This drawing is a stock power transmission component. Details shown which do not affect drive function may be changed without any notification	
Material:	STEEL
Finish:	CLEAR ZINC

Rev	Revision	Date	By
 Gates Corporation Denver, Colorado			
Gates Part No: P32-5MGT-25-MPB			
Gates Product No: 7709-5032			
Drawing Number: P32-5MGT-25-MPB			