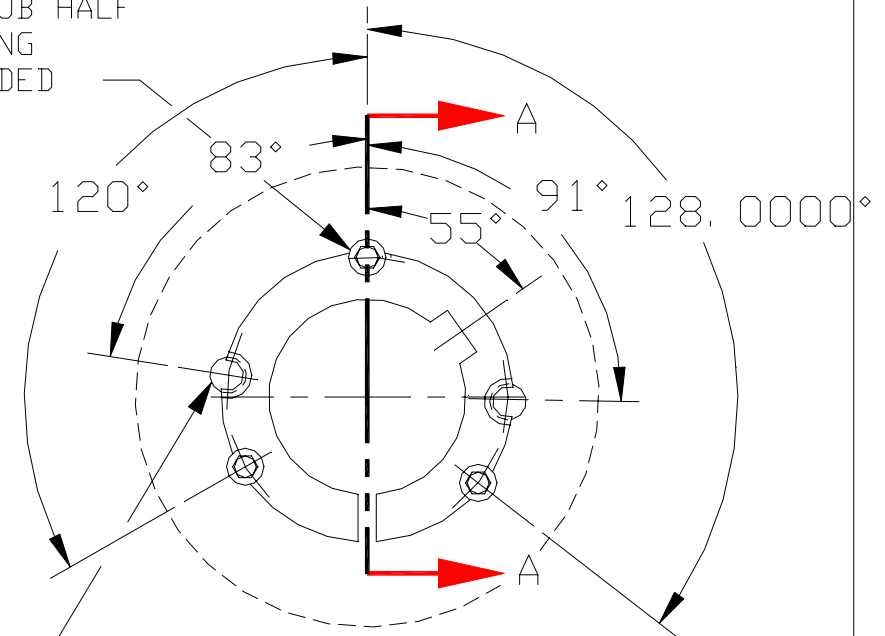
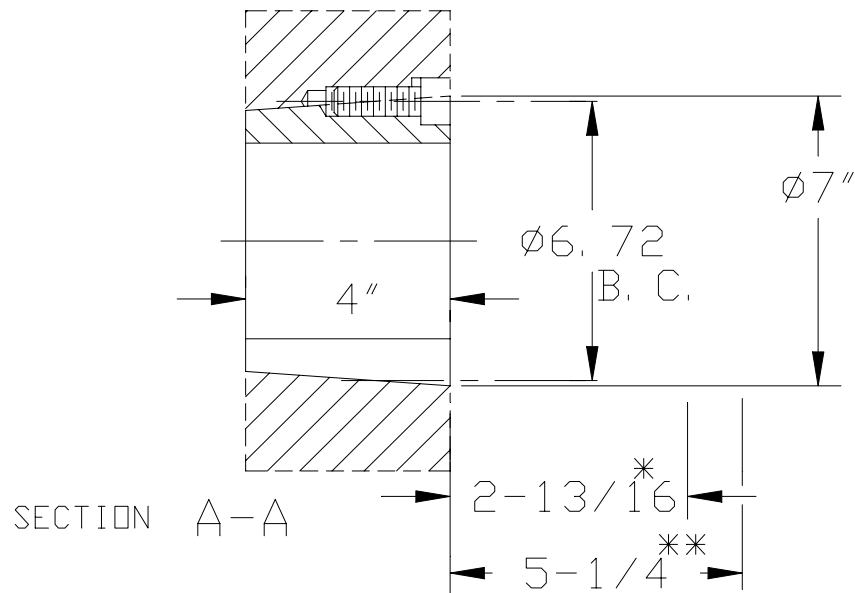


5040 TAPER-LOCK BUSHING

(3) 7/8-9 NC X 2-1/4 LG SOC HD
CAP SCREWS FURNISHED W/ BUSHING
FOR TIGHTENING ON SHAFT; HUB HALF
OF HOLE IS THREADED-BUSHING
HALF OF HOLE IS NOT THREADED



USE ONLY TWO SCREW FOR REMOVING
FROM SHAFT:
BUSHING HALF OF HOLE IS THREADED-
HUB HALF OF HOLE IS NOT THREADED
BORE:
BUSHING KW:

* SPACE REQD TO TIGHTEN BUSHING
ALSO SPACE REQD TO LOOSEN SCREWS TO
PERMIT REMOVAL OF HUB BY PULLER.

** SPACE REQD TO LOOSEN BUSHING USING
TWO SCREW AS JACKSCREW-NO PULLER REQD.

8° INCLUDED ANGLE

CERTIFIED

CUSTOMER NAME:

CUSTOMER DWG NO. :



THE GATES RUBBER CO.
DENVER, COLORADO

APPROVED BY _____

DATE _____

DR. BY _____ DATE _____
CK. BY _____
APPD. BY _____

DIST.

DRAWING NO.