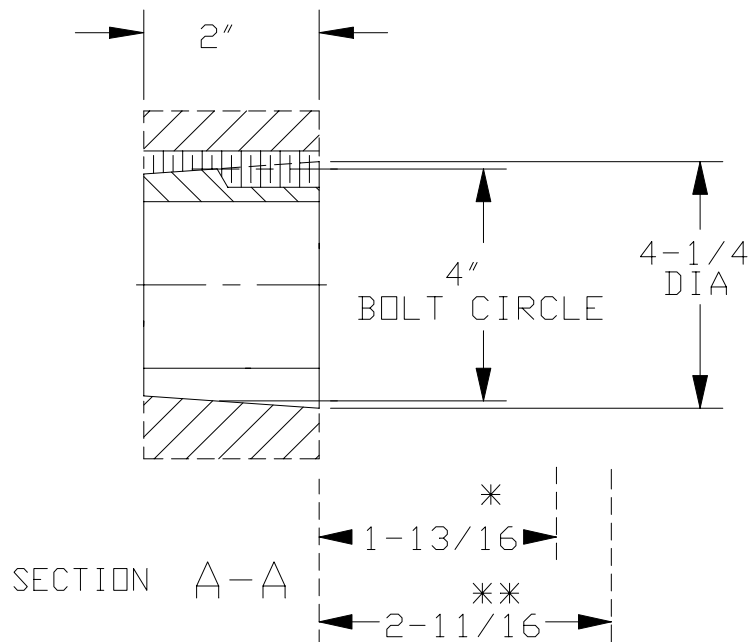


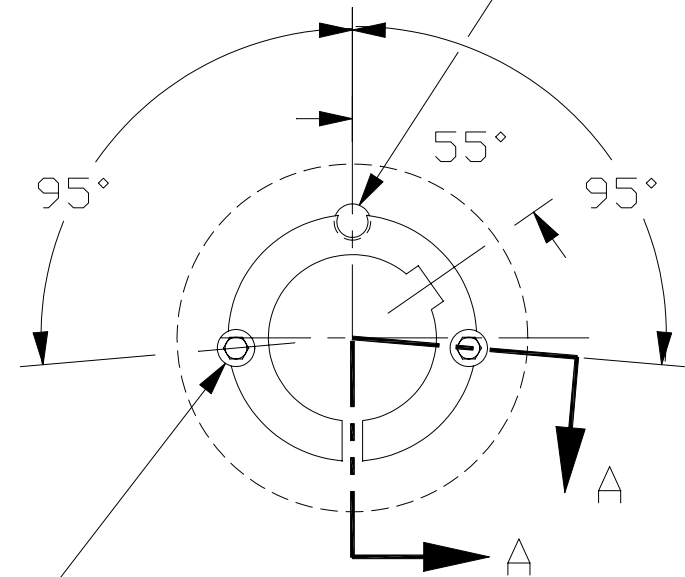
# 3020 TAPER-LOCK BUSHING

USE ONLY ONE SCREW FOR REMOVING  
FROM SHAFT:  
BUSHING HALF OF HOLE IS THREADED &  
HUB HALF OF HOLE IS NOT THREADED



- \* SPACE REQD TO TIGHTEN BUSHING  
ALSO SPACE REQD TO LOOSEN SCREWS TO  
PERMIT REMOVAL OF HUB BY PULLER.
- \*\* SPACE REQD TO LOOSEN BUSHING USING  
ONE SCREW AS JACKSCREW-NO PULLER REQD.

8° INCLUDED ANGLE



(2) 5/8-11 NC X 1-1/4 LG SET SCREWS  
FURN W/ BUSH TO TIGHTEN ON SHAFT  
(HUB HALF OF HOLE IS THREADED &  
BUSH HALF OF HOLE IS NOT THREADED)

BORE:  
BUSHING KW:

CERTIFIED

CUSTOMER NAME:

CUSTOMER DWG NO. :



THE GATES RUBBER CO.  
DENVER, COLORADO

APPROVED BY \_\_\_\_\_

DATE \_\_\_\_\_

DR. BY \_\_\_\_\_ DATE \_\_\_\_\_  
CK. BY \_\_\_\_\_  
APPD. BY \_\_\_\_\_

DIST.

DRAWING NO.