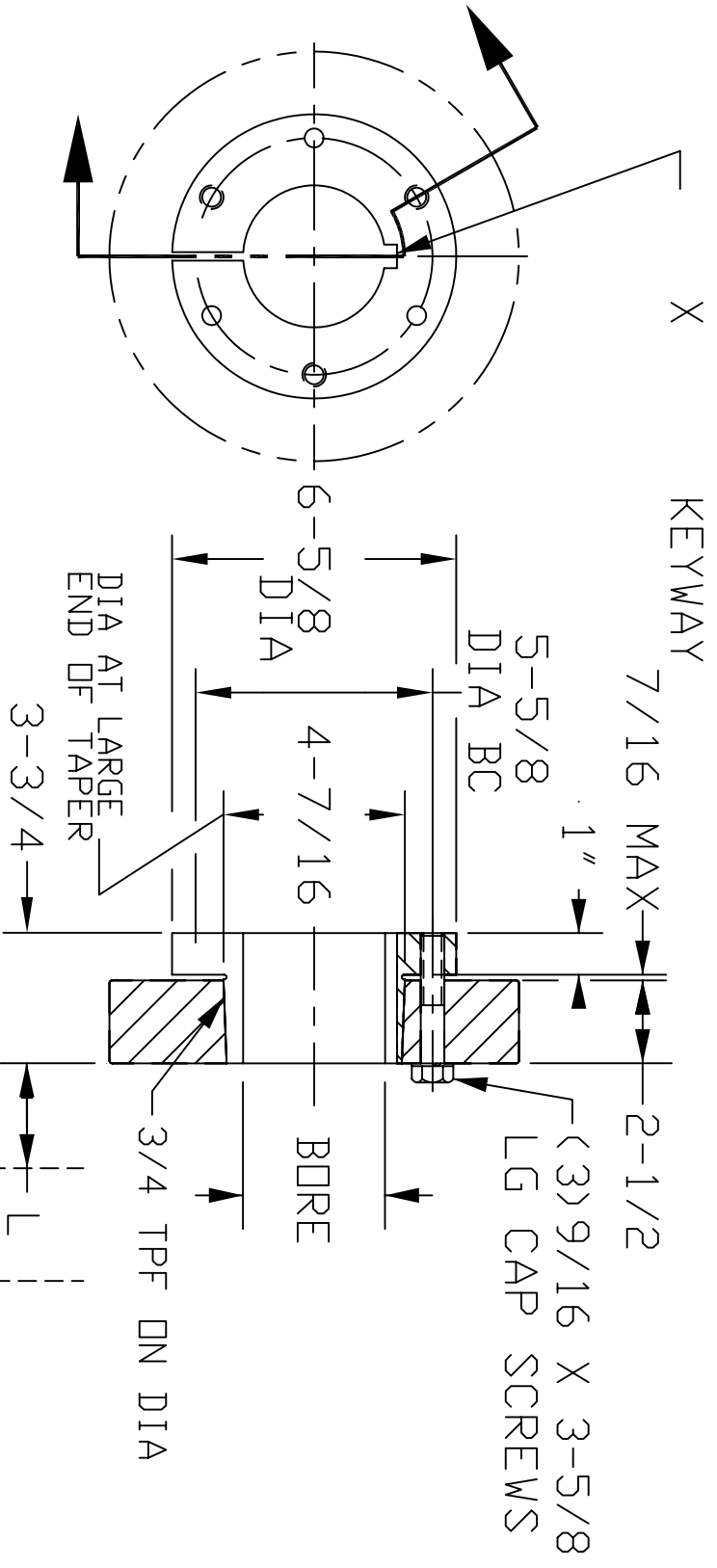


"F" Q-D BUSHING



CONVENTIONAL MOUNTING SPACE REQUIRED				REVERSE MOUNTING SPACE REQUIRED			
TO TIGHTEN BUSHING		TO LOOSEN BUSHING		TO TIGHTEN BUSHING		TO LOOSEN BUSHING	
OPEN END WRENCH	SOCKET WRENCH	OPEN END WRENCH	SOCKET WRENCH	OPEN END WRENCH	SOCKET WRENCH	OPEN END WRENCH	SOCKET WRENCH
1-9/32	3-3/32	4-1/8	5-15/16	4-3/16	5-1/2	7-5/16	

CONVENTIONAL  
MOUNTING

REVERSE  
MOUNTING

APPROVAL

THE MATERIALS AND INFORMATION, INCLUDING THE PRINCIPALS OF DESIGN PRESENTED, ARE THE EXCLUSIVE PROPERTY OF THE GATES RUBBER COMPANY AND ARE TO BE CONSIDERED AS CONFIDENTIAL INFORMATION. ACCORDINGLY, THIS INFORMATION IS SUBMITTED TO YOU WITH THE AGREEMENT THAT IT IS NOT TO BE REPRODUCED, COPIED, OR LOANED, IN PART OR IN WHOLE, NOR IS THE INFORMATION TO BE RELAYED TO ANY OTHER INDIVIDUAL OR COMPANY. ACCEPTANCE OF THIS DRAWING WILL BE CONSTRUED AS AN AGREEMENT TO THE ABOVE.

THIS DRAWING IS A STOCK POWER TRANSMISSION COMPONENT. DETAILS SHOWN WHICH DO NOT AFFECT DRIVE FUNCTION MAY BE CHANGED WITHOUT ANY NOTIFICATION.

ORDER NO. : _____	PRODUCT	QD Bushing	APPROVED BY	DATE	DIST.
CUSTOMER ORDER NO. : _____	PART	F	DR. BY	MDW	DATE 05/20/2004
			CK. BY		
			APPD. BY	JEM	
					DRAWING NO. 7839-2XXX



GATES CORPORATION  
DENVER, COLORADO