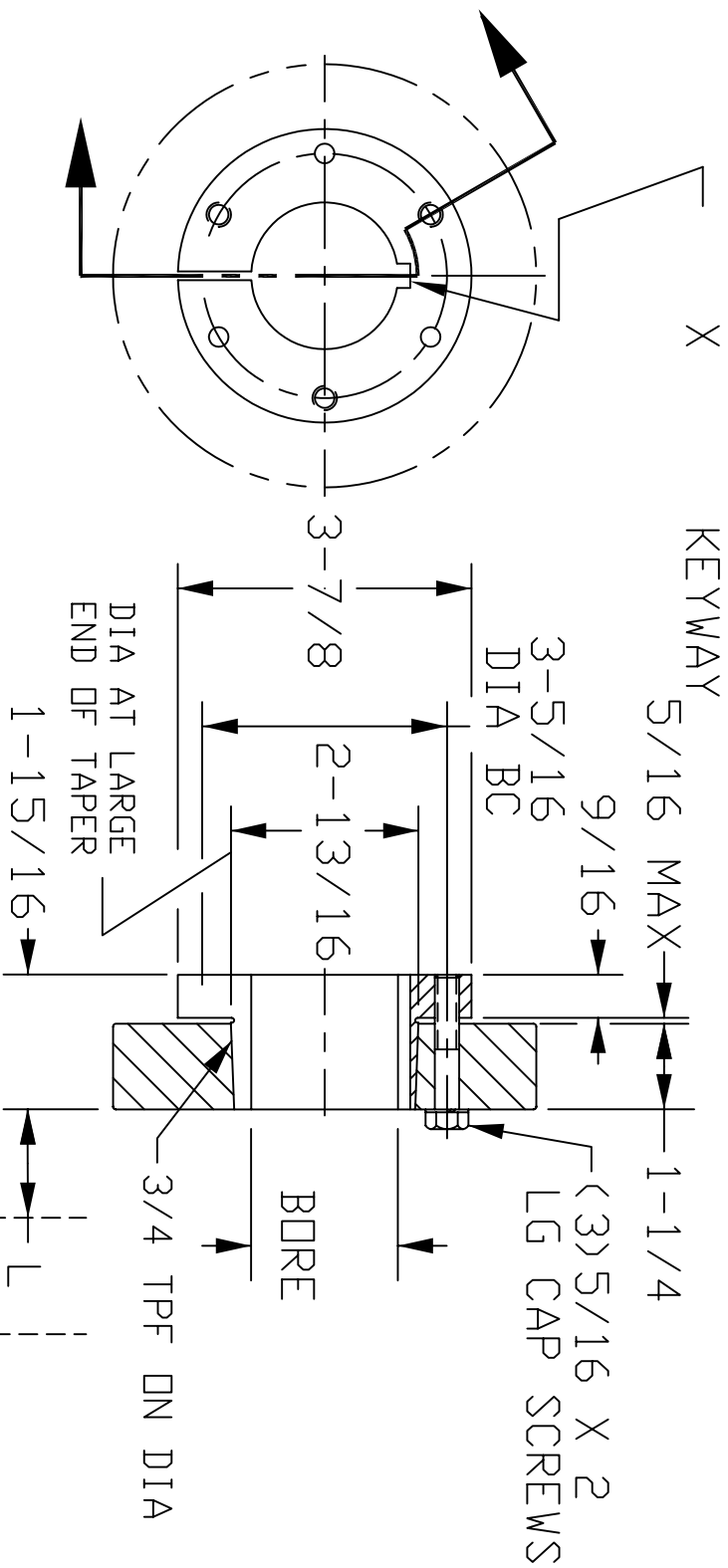


"SK" Q-D BUSHING



CONVENTIONAL MOUNTING SPACE REQUIRED		REVERSE MOUNTING SPACE REQUIRED	
TO TIGHTEN BUSHING	TO LOOSEN BUSHING	TO TIGHTEN BUSHING	TO LOOSEN BUSHING
OPEN END WRENCH	SOCKET WRENCH	OPEN END WRENCH	SOCKET WRENCH
2-23/32	2-23/32	2-1/4	4-1/4
		2-5/16	4-5/16
		2-3/8	5

CONVENTIONAL
MOUNTING

REVERSE
MOUNTING

APPROVAL

THE MATERIALS AND INFORMATION, INCLUDING THE PRINCIPALS OF DESIGN PRESENTED, ARE THE EXCLUSIVE PROPERTY OF THE GATES RUBBER COMPANY AND ARE TO BE CONSIDERED AS CONFIDENTIAL INFORMATION. ACCORDINGLY, THIS INFORMATION IS SUBMITTED TO YOU WITH THE AGREEMENT THAT IT IS NOT TO BE REPRODUCED, COPIED, OR LOANED, IN PART OR IN WHOLE, NOR IS THE INFORMATION TO BE RELAYED TO ANY OTHER INDIVIDUAL OR COMPANY. ACCEPTANCE OF THIS DRAWING WILL BE CONSTRUED AS AN AGREEMENT TO THE ABOVE.

THIS DRAWING IS A STOCK POWER TRANSMISSION COMPONENT. DETAILS SHOWN WHICH DO NOT AFFECT DRIVE FUNCTION MAY BE CHANGED WITHOUT ANY NOTIFICATION.

ORDER NO. : _____

PRODUCT QD Bushing

APPROVED BY _____

DIST.

CUSTOMER ORDER NO. : _____

PART SK

DATE _____

DAY



GATES CORPORATION
DENVER, COLORADO

DR. BY _____ MDW DATE 05/20/2004
CK. BY _____
APPD. BY JEM

DRAWING NO.

7838-4XXX