

# REC Reducing Couplings

## Explosionproof, Dust-Ignitionproof

### NEC/CEC:

Class I, Division 1 and 2 Groups A◇, B◆, C, D

Class II, Division 1 and 2 Groups E, F, G

Class III

### Applications

- To connect two different sizes of conduit together or to replace a coupling and reducer in an installation.

### Features

- Tapered threads (NPT).

### Standard Materials

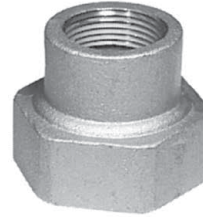
- Malleable Iron

### Standard Finishes

- Zinc electroplated

### NEC/CEC Certifications and Compliances

- CSA Standard: C22.2 No. 30
- CSA Certified: LR-9795
- NEC Articles 500-503 and 505



	Large Hub Size (Inches)	Small Hub Size (Inches)	Catalog Number
REC — Threaded Bell Reducing Couplings			
	3/4	1/2	REC-0705S ◆
	1	1/2	REC-1005S ◇
	1	3/4	REC-1007S ◇
	1-1/4	3/4	REC-1207 ◆
	1-1/4	1	REC-1210 ◆
	1-1/2	3/4	REC-1507 ◆
	1-1/2	1	REC-1510 ◆
	2	3/4	REC-2007 ◆
	2	1	REC-2010 ◆
	2	1-1/4	REC-2012 ◆
	2	1-1/2	REC-2015 ◆
	2-1/2	1-1/2	REC-2515 ◆
	3	2	REC-3020 ◆
	4	3	REC-4030 ◆
	5	4	REC-5040

◇ Indicates items in the shaded area which are UL Listed for Class I, Groups A, B, C, D; Class II, Groups E, F, G; and Class III.

◆ Indicates items are UL Listed for Class I, Groups B, C, D; Class II, Groups E, F, G; and Class III.