



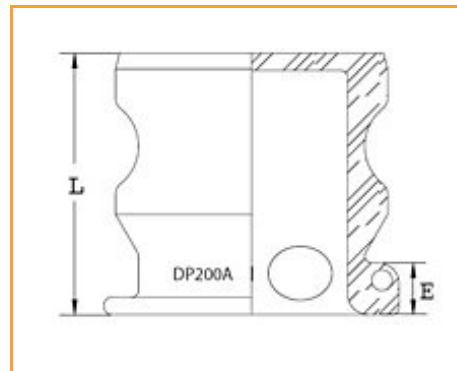
Item # 20195381, INSTA-LOCK DUST PLUG DP500SS 5 in 316# Stainless Steel

APPLICATION: Dust plug is used to seal the pipe system and hose assemblies during non-use or transfer of assembly. Mating parts are the Part C, Part B, and Part D.

BRANDING: Example: Continental Contitech DP200SS

Note: Continental Contitech Fittings are never to be used in steam or compressed air service.

Warning: Dust Caps and Dust Plugs are not to be used in pressure applications for safety and environmental reasons.



[Product Specifications](#) | [Specifications](#)

Product Specifications

| | |
|------------|-----------------------|
| Type | INSTA-LOCK™ Dust Plug |
| Style | Dust Plug |
| Material | 316# Stainless Steel |
| Brand | INSTA-LOCK™ DUST PLUG |
| Order Code | 650-848 |

Specifications

| | |
|---------------------------|----------------------|
| End Size | 5 in 127.00 mm |
| Total Width | 2.594 in |
| Length | 2.594 in |
| E - Exposed Length | 0.469 in |
| Weight | 6.2500 lb 2.83 kg |
| Order Increment | 1 |

MideastUS@contitech.us
1-800-235-4632
Contitech.us

ContiTech