



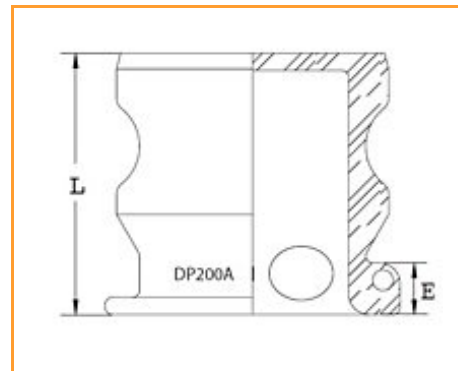
Item # 20135840, INSTA-LOCK DUST PLUG DP250SS 2 1/2 in 316# Stainless Steel

APPLICATION: Dust plug is used to seal the pipe system and hose assemblies during non-use or transfer of assembly. Mating parts are the Part C, Part B, and Part D.

BRANDING: Example: Continental Contitech DP200SS

Note: Continental Contitech Fittings are never to be used in steam or compressed air service.

Warning: Dust Caps and Dust Plugs are not to be used in pressure applications for safety and environmental reasons.



[Product Specifications](#) | [Specifications](#)

Product Specifications

Type	INSTA-LOCK™ Dust Plug
Style	Dust Plug
Material	316# Stainless Steel
Brand	INSTA-LOCK™ DUST PLUG
Order Code	650-848

Specifications

End Size	1 1/2 in 38.10 mm
Total Width	2.156 in
Length	2.156 in
E - Exposed Length	0.469 in
Weight	2.0100 lb 0.91 kg
Order Increment	1

MideastUS@contitech.us
1-800-235-4632
Contitech.us

ContiTech