



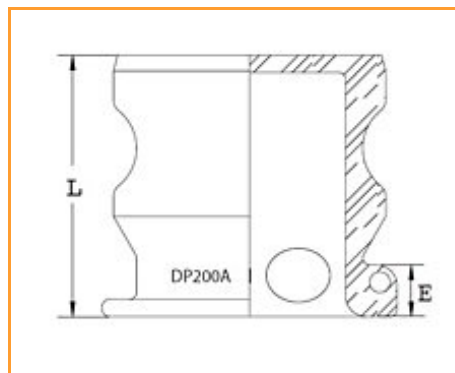
Item # 20195323, INSTA-LOCK DUST PLUG DP050AL 1/2 in Aluminum

APPLICATION: Dust plug is used to seal the pipe system and hose assemblies during non-use or transfer of assembly. Mating parts are the Part C, Part B, and Part D.

BRANDING: Example: Continental Contitech DP200SS

Note: Continental Contitech Fittings are never to be used in steam or compressed air service.

Warning: Dust Caps and Dust Plugs are not to be used in pressure applications for safety and environmental reasons.



[Product Specifications](#) | [Specifications](#)

Product Specifications

Type	INSTA-LOCK™ Dust Plug
Style	Dust Plug
Material	Aluminum
Brand	INSTA-LOCK™ DUST PLUG
Order Code	650-832

Specifications

End Size	3 in 76.20 mm
Total Width	2.500 in
Length	2.500 in
E - Exposed Length	0.469 in
Weight	0.1000 lb 0.05 kg
Order Increment	1

MideastUS@contitech.us
1-800-235-4632
Contitech.us

ContiTech