



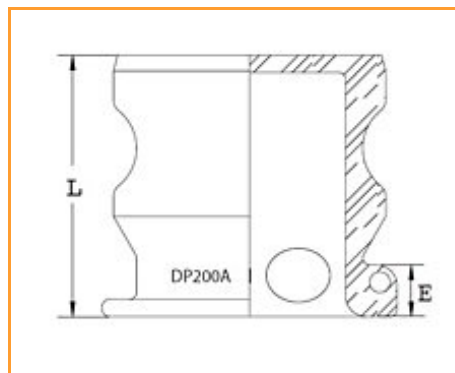
## Item # 20135772, INSTA-LOCK DUST PLUG DP250AL 2 1/2 in Aluminum

**APPLICATION:** Dust plug is used to seal the pipe system and hose assemblies during non-use or transfer of assembly. Mating parts are the Part C, Part B, and Part D.

**BRANDING:** Example: Continental Contitech DP200SS

Note: Continental Contitech Fittings are never to be used in steam or compressed air service.

Warning: Dust Caps and Dust Plugs are not to be used in pressure applications for safety and environmental reasons.



[Product Specifications](#) | [Specifications](#)

### Product Specifications

Type	INSTA-LOCK™ Dust Plug
Style	Dust Plug
Material	Aluminum
Brand	INSTA-LOCK™ DUST PLUG
Order Code	650-832

### Specifications

<b>End Size</b>	1 1/2 in 38.10 mm
<b>Total Width</b>	2.156 in
<b>Length</b>	2.156 in
<b>E - Exposed Length</b>	0.469 in
<b>Weight</b>	0.5800 lb 0.26 kg
<b>Order Increment</b>	1

[MideastUS@contitech.us](mailto:MideastUS@contitech.us)  
1-800-235-4632  
Contitech.us

**ContiTech**