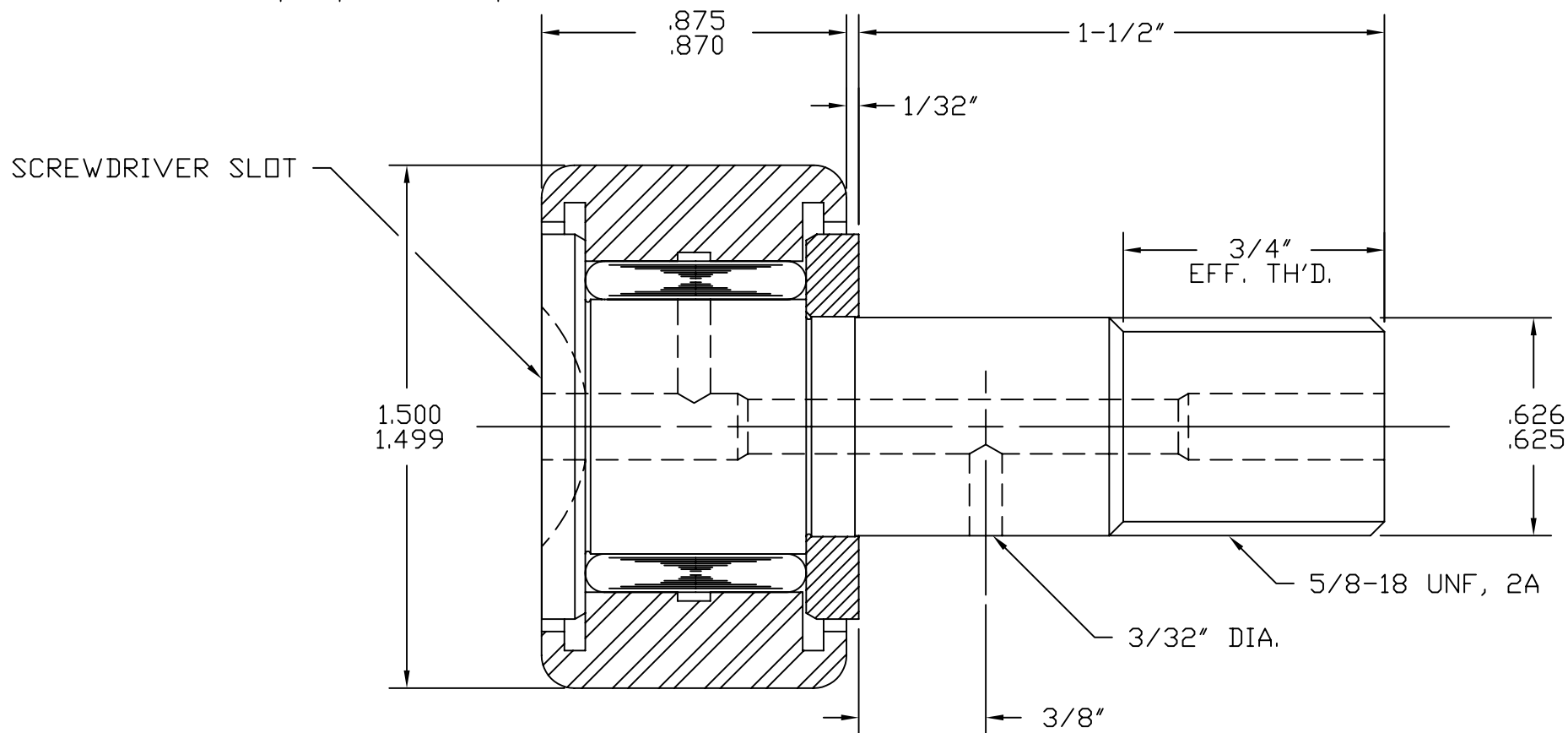


| SYM | REVISION | BY | DATE |
|-----|-------------------|-----|--------|
| A | REVISED & REDRAWN | BSK | 8/3/95 |

SCALE: ~



BASIC DYNAMIC CAPACITY - 4450
MAX. ALLOWABLE LOAD - 3760

MAT'L: ST'D BEARING STEELS.
BEARING PACKED WITH GENERAL PURPOSE EP GREASE.
RELUBE PROVISIONS WILL ACCEPT 3/16\" DRIVE TYPE
FITTINGS, PLUGS SUPPLIED FOR UNUSED HOLES.

TOLERANCES

UNLESS OTHERWISE NOTED
FRACTIONS: $\pm .010$ ANGLES: $\pm .5$
2 PLACE DECIMALS (.00): $\pm .005$
3 PLACE DECIMALS (.000): $\pm .002$



ACCURATE BUSHING CO. INC.
Manufacturers of SMITH® Bearing Product
443 NORTH AVENUE
Garwood, NJ 07027

| | | | |
|------------|-----------------------|----------|----------------|
| PART NAME | STANDARD CAM FOLLOWER | | |
| PART NO. | CR-1-1/2 | | |
| DRAWN BY | BSK | DATE | 8/3/95 |
| CHECKED BY | | FILENAME | \CRASSYS\1-1-2 |