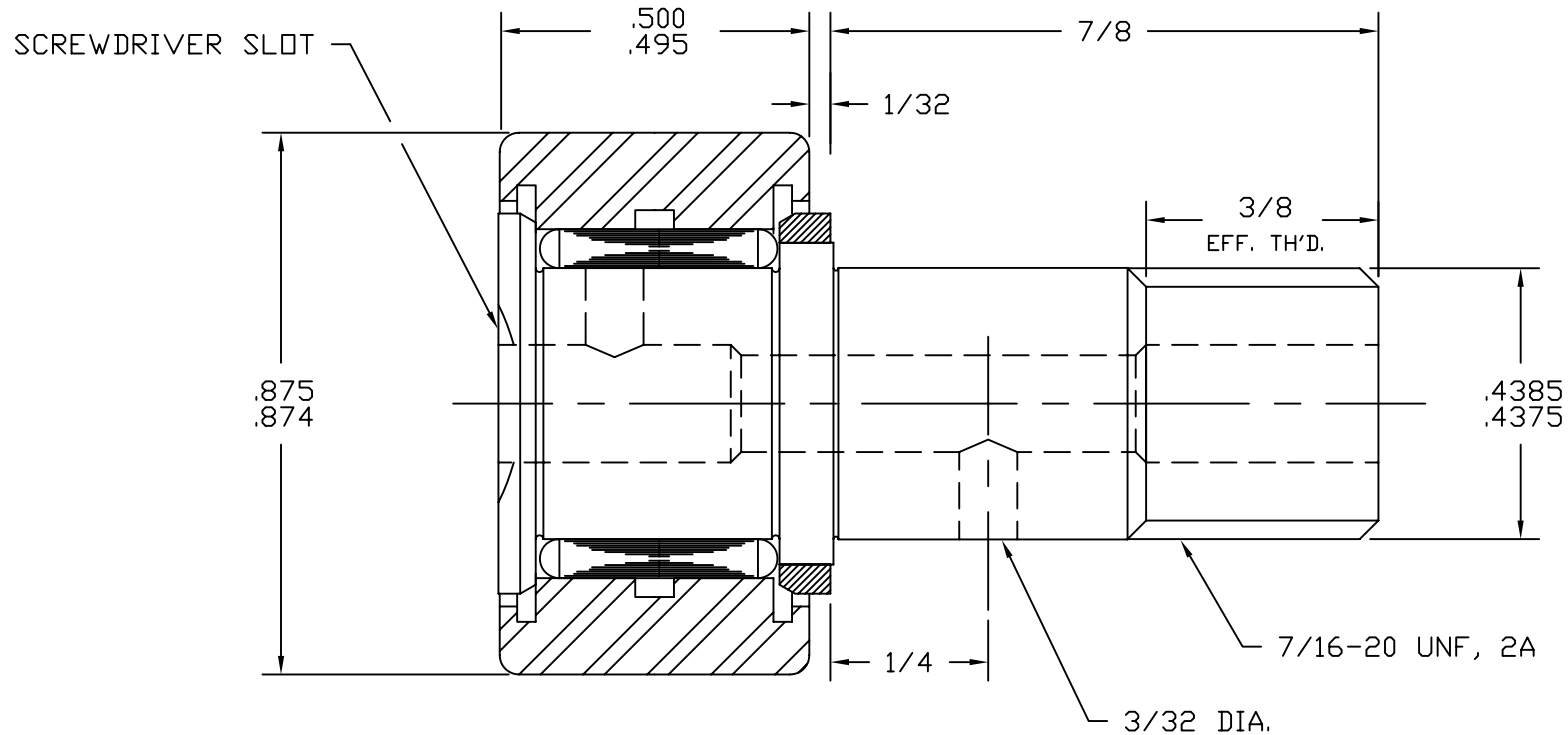


SYM	REVISION	BY	DATE
A	REVISED & REDRAWN	BSK	7/18/95

SCALE: ~



BASIC DYNAMIC CAPACITY - 1540  
MAX. ALLOWABLE LOAD - 1600

MAT'L: ST'D BEARING STEELS.  
BEARING PACKED WITH GENERAL PURPOSE EP GREASE.  
RELUBE PROVISIONS WILL ACCEPT 3/16" DRIVE TYPE  
FITTINGS, PLUGS SUPPLIED FOR UNUSED HOLES.

#### TOLERANCES

UNLESS OTHERWISE NOTED  
FRACTIONS:  $\pm .010$  ANGLES:  $\pm .5$   
2 PLACE DECIMALS (.00):  $\pm .005$   
3 PLACE DECIMALS (.000):  $\pm .002$



**ACCURATE BUSHING CO. INC.**  
Manufacturers of SMITH® Bearing Product  
443 NORTH AVENUE  
Garwood, NJ 07027

PART NAME	STANDARD CAM FOLLOWER		
PART NO.	HR-7/8		
DRAWN BY	BSK	DATE	7/18/95
CHECKED BY		FILENAME	\HRASSYS\7-8