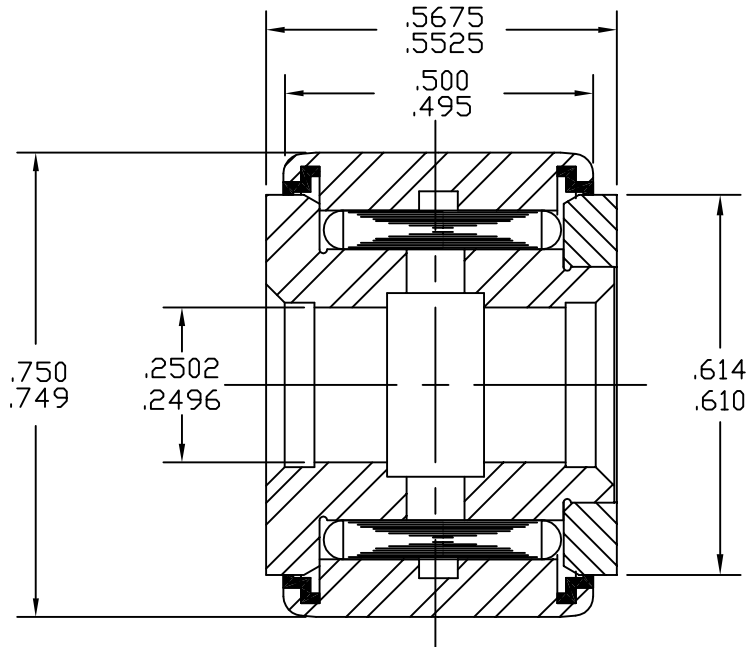


SYM	REVISION	BY	DATE
A	REVISED & REDRAWN	BSK	7/18/95

SCALE: ~



BASIC DYNAMIC CAPACITY - 1670 lbs.  
LIMITING SPEED - 3500 RPM

MAT'L: ST'D BEARING STEELS, SEALS - ACETAL.  
BEARING PACKED WITH GENERAL PURPOSE EP GREASE.  
RELUBE PROVISIONS THRU BORE.

TOLERANCES  
UNLESS OTHERWISE NOTED  
FRACTIONS:  $\pm .010$  ANGLES:  $\pm .5$   
2 PLACE DECIMALS (.00):  $\pm .005$   
3 PLACE DECIMALS (.000):  $\pm .002$



**ACCURATE BUSHING CO. INC.**  
Manufacturers of SMITH® Bearing Product  
443 NORTH AVENUE  
Garwood, NJ 07027

PART NAME	STANDARD CAM FOLLOWER		
PART NO.	YR-3/4-X		
DRAWN BY	BSK	DATE	7/18/95
CHECKED BY		FILENAME	\YRASSYS\3-4-X