

NE Series Disconnect Switches

Explosionproof, Dust-Ignitionproof

NEC:

Class I, Division 1 and 2, Groups B, C, D

Class II, Division 1 and 2, Groups E, F, G

Class III

NEMA 4, 4X, 7, 9

Application

- Explosionproof disconnect enclosures are used where hazardous materials are handled or stored. These units are used for overload and short circuit protection, control of lighting and power circuits.

Features

- Precision machined flame path between box and cover.
- Bolt on stainless steel slotted mounting feet.
- Stainless steel hinges are standard.
- Stainless steel, captive Quad-Lead® cover bolts are standard (disengaged in 1-1/2 turns).
- Ground lug package and installation instructions for termination of ground wire enclosed.
- External operating handle with stops for limiting handle travel.
- Disconnects and operator shafts are stainless steel.
- Disconnects operators can be locked in the ON or OFF position (up to 3 padlocks).
- External flange maximizes internal space.
- Standard outlets top and bottom for line and load wiring.
- Plugged 1/2" outlets top and bottom for breather and drain.
- Disconnects mounted on a galvanized steel removable pan.
- O-ring gasket ensures watertight integrity.

Standard Materials

- Bodies and covers: copperfree (4/10 of 1% max.) aluminum
- Cover bolts and hinges: stainless steel
- O-ring: neoprene

Standard Finishes

- Bodies and covers: gray epoxy powder coat inside and outside standard to provide NEMA 4X rating

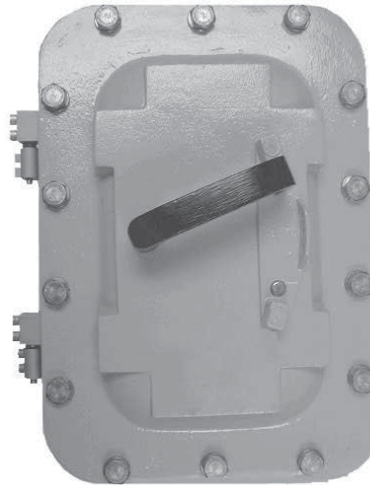
Options

Must be listed in alphanumeric sequence at the end of the catalog number.

- Auxiliary switch (1A or 1B), add suffix —**AS1**.
- Auxiliary switch (2A or 2B), add suffix —**AS2**.
- Breather, NEMA 4X (includes outlet and installation), add suffix —**BR**.
- Drain, NEMA 4X (includes outlet and installation), add suffix —**DN**.
- External grounding stud, add suffix —**EGS**.
- Plastic nameplate, 50.8 mm x 101.6 mm (2" x 4"), 3.2 mm (0.125") black letters on white surface, 3 lines max, specify legend, add suffix —**NP**.
- Shunt trip (specify voltage), add suffix —**ST**.
- Under voltage release (specify voltage), add suffix —**UV**.

NEC Certifications and Compliances

- UL Standard: UL 1203
- UL Listed: E84577

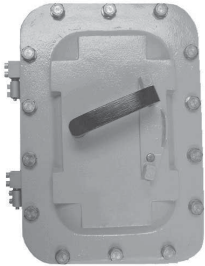


NE Series Disconnect Switches

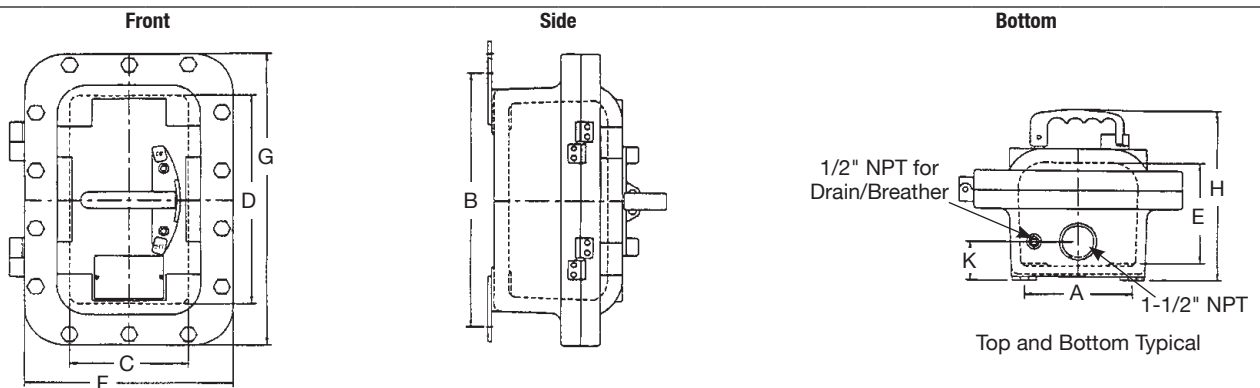
Explosionproof, Dust-Ignitionproof

NEC:
Class I, Division 1 and 2, Groups B, C, D
Class II, Division 1 and 2, Groups E, F, G
Class III
NEMA 4, 4X, 7, 9

Disconnect Switches

Type	Number of Poles	Volts	Amp Rating	Standard Conduit Outlet (Inches)	Catalog Number
Supplied with Cutler-Hammer + disconnect switch. Type J fuses recommended.					
 Fused (fuses not included)	3	600 Vac, 125/250 Vdc	30	1.50	NEAB3036FDS
			60	2.00	NEBB6036FDS
			100	2.50	NECB10036FDS
Non-Fused	3	600 Vac, 125/250 Vdc	30	1.50	NEAB3036DS
			60	1.50	NEAB6036DS
			100	2.00	NEBB10036DS

Dimensions in Millimeters (Inches)



Enclosure Size	Catalog Number	Dimensions in Millimeters (Inches)								Number of Outlets	K Dimension	Approximate Weight kgs (lbs)
		Mounting A	B	C	Inside D	E	F	Outside G	H			
A	AEAB	139.7 (5.50)	333.5 (13.13)	155.7 (6.13)	273.1 (10.75)	133.4 (5.25)	270 (10.63)	387.4 (15.25)	224.5 (8.84)	2	50.8 (2.00)	17.24 (38)
B	AEBB	152.4 (6.00)	457.2 (18.00)	165.1 (6.50)	406.4 (16.00)	139.7 (5.50)	279.4 (11.00)	520.7 (20.50)	227.8 (8.97)	2	58.7 (2.31)	25.85 (57)
C	AECB	260.4 (10.25)	574.8 (22.63)	289.1 (11.38)	508 (20.00)	162.1 (6.38)	416.1 (16.38)	638.3 (25.13)	243.6 (9.59)	2	88.9 (3.50)	47.17 (104)

Electrical Ratings Maximum Motor HP

Maximum Amps	Maximum Horsepower Rating				
	120 Vac	240 Vac	480 Vac	600 Vac	250 Vdc
30	5	10	20	25	7-1/2
60	10	20	40	60	15
100	15	30	75	75	25

+ Cutler-Hammer is a registered trademark of Eaton Corporation.