


**The Timken Company**

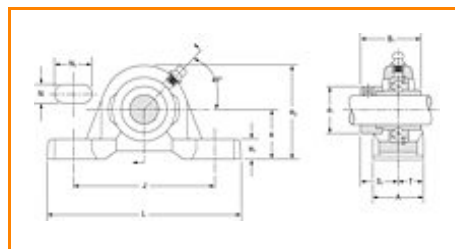
4500 Mt Pleasant St. NW

N. Canton, OH 44720

**Phone:** (234) 262-3000

**E-Mail:** [CustomerCAD@timken.com](mailto:CustomerCAD@timken.com) • **Web site:** [www.timken.com](http://www.timken.com)

Timken Part Number RAK 2 7/16, Pillow Block Units Eccentric Locking Collar (Includes Industrial and Standard Series)



[Specifications](#) | [Dimensions](#) | [Basic Load Ratings](#)

## Specifications

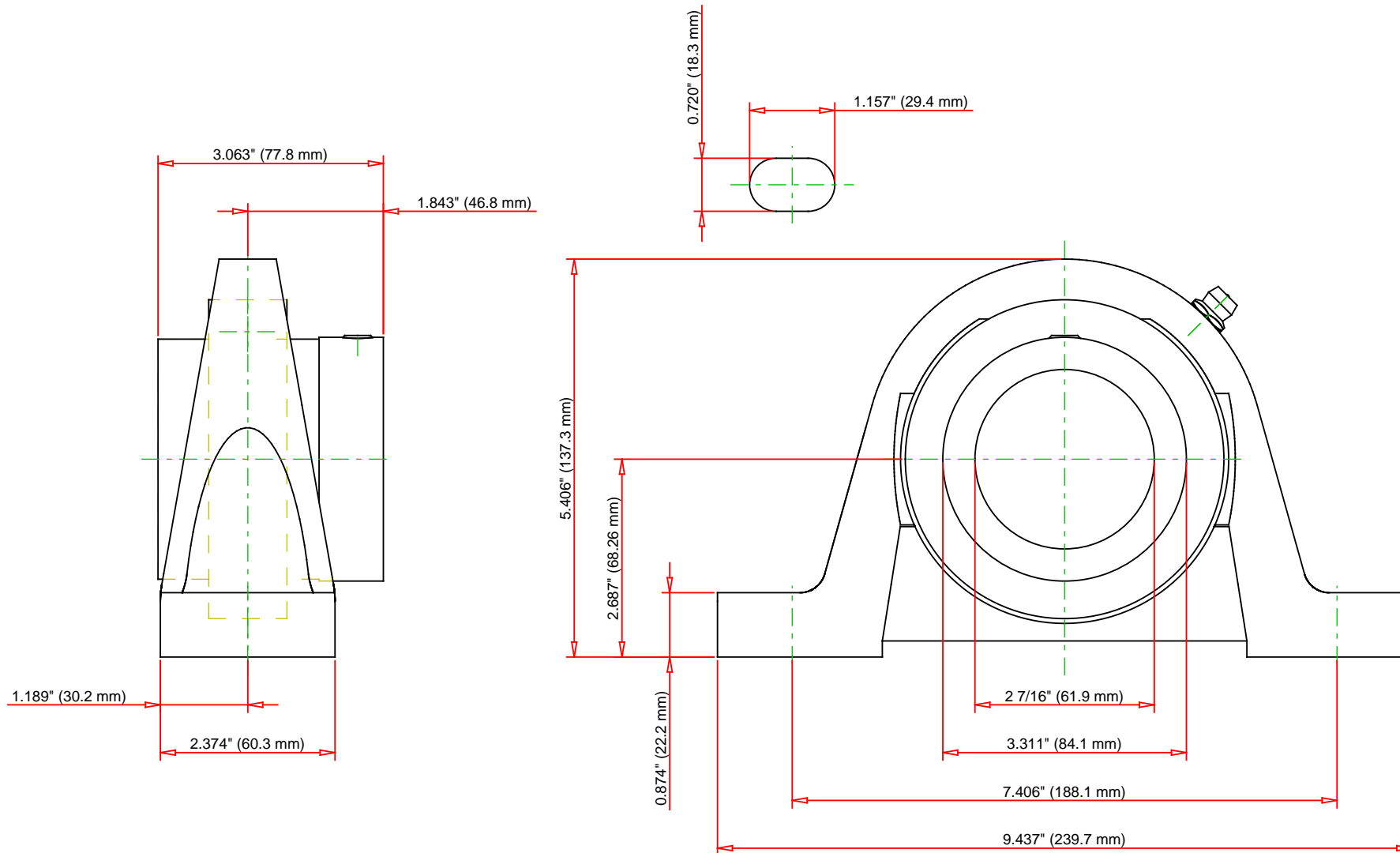
<b>Bore Size d</b>	2 7/16 in 61.9 mm
<b>Bearing Number</b>	G1207KRRB
<b>Inside Ring Outside Diameter</b>	0.874 in 22.2 mm
<b>Dimension B1</b>	3.063 in 77.8 mm
<b>Dimension T</b>	1.189 in 30.2 mm
<b>Series</b>	Industrial
<b>Weight</b>	12.150 lb 5.511 Kg
<b>Seal Type</b>	Shroud Seal

## Dimensions

<b>Shaft Height H</b>	68.26 mm 2.687 in
<b>Total Length L</b>	239.7 mm 9.437 in
<b>Total Width A</b>	2.374 in 60.3 mm
<b>Bolt Hole Spacing J</b>	188.1 mm 7.406 in
<b>Bolt Hole Width N</b>	18.3 mm 0.720 in
<b>Bolt Hole Length N1</b>	29.4 mm 1.157 in
<b>Base Height H1</b>	22.2 mm 0.874 in
<b>Total Height H2</b>	137.3 mm 5.406 in
<b>Dimension L1</b>	79.9 mm 3.146 in
<b>Inside Ring Width B</b>	N/A
<b>Center of Bearing from End S</b>	31 mm 1.220 in

## Basic Load Ratings

<b>Static Load Rating</b>	8000 lbf 35600 N
<b>Dynamic Load Rating</b>	13200 lbf 58800 N



Bearing Number	G1207KRRB			
Load Ratings - C <sub>r</sub>	13200	lbf	58800	N
Load Ratings - C <sub>0r</sub>	8000	lbf	35600	N
Weight	12.15	lb	5.511	kg

**TIMKEN®**

THE TIMKEN COMPANY  
NORTH CANTON, OHIO USA

**RAK 2 7/16**

Pillow Block Units Eccentric Locking Collar  
(Includes Industrial and Standard Series)

Every reasonable effort has been made to ensure the accuracy of the information contained in this writing, but no liability is accepted for errors, omissions or for any other reason.

**FOR DISCUSSION ONLY**