


The Timken Company

4500 Mt Pleasant St. NW

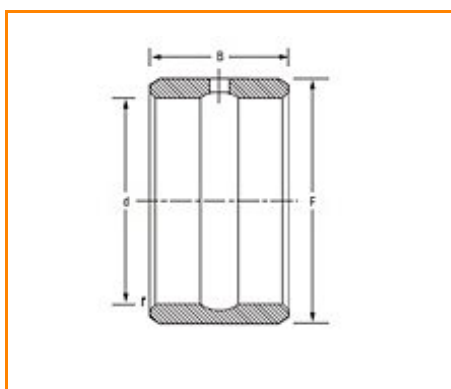
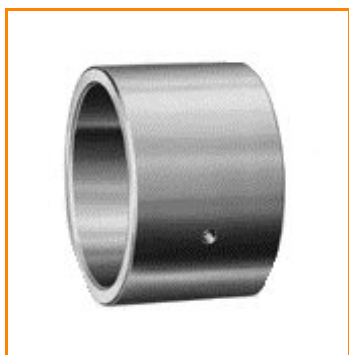
N. Canton, OH 44720

Phone: (234) 262-3000

E-Mail: CustomerCAD@timken.com • **Web site:** www.timken.com

Timken Part Number IR-728848, Inner Ring (IR)

- Ideal choice where the shaft is not practical to use as inner raceway.
- Designed to meet established inch tolerances.
- Maximum shaft fillet radius cannot exceed inner-ring bore chamfer as shown.
- Optional centralized lubrication groove (bore) or through hole available – specify when ordering.
- Designed to be axially clamped against shoulder for loose transition fit on shaft.
- After mounting, for tight transition fit (keeping inner ring from rotating relative to shaft), inner-ring O.D. must not

[+ more](#)

[Dimensions](#) | [Specifications](#) | [Sub Assembly Part Numbers](#)

Dimensions

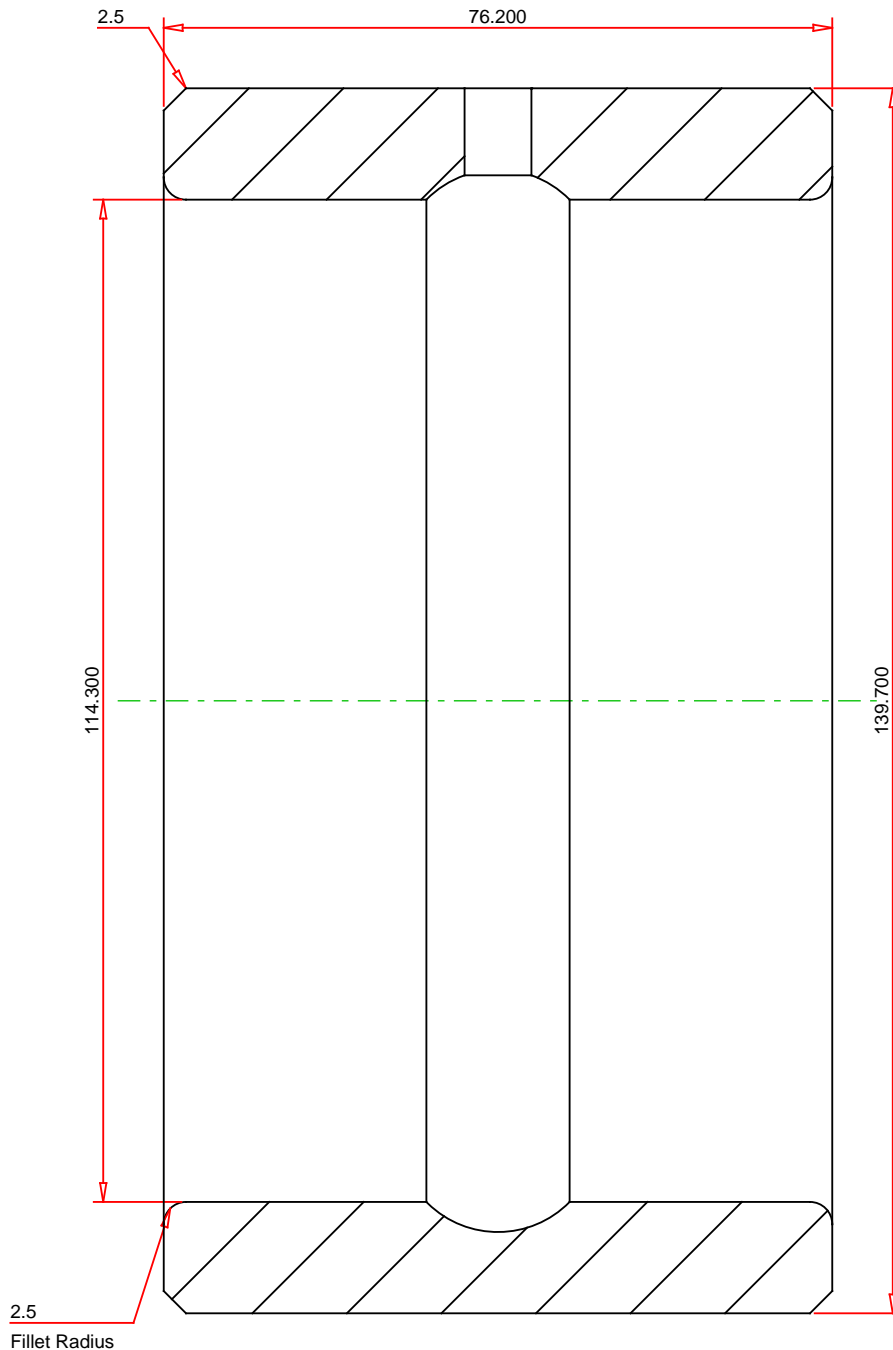
Shaft Diameter	4.500 in
Dimension D	4.500 in 114.3 mm
Dimension F	5.500 in 139.7 mm
Dimension B	3.000 in 76.20 mm
Chamfer r_{smin}	0.10 in 2.54 mm

Specifications

Max. Loose Transition Fit S	114.287 mm 4.4995 in
Min. Loose Transition Fit S	114.267 mm 4.4987 in
Max. Interference Fit	114.328 mm 4.5011 in
Min. Interference Fit	114.313 mm 4.5005 in
Weight	6.590 lb 2.989 Kg

Sub Assembly Part Numbers

Used with Bearing Designation	HJ-8811248
--------------------------------------	------------



METRIC UNITS

Bearing Weight 2.9 kg

TIMKEN®

THE TIMKEN COMPANY
NORTH CANTON, OHIO USA

IR-728848
CYLINDRICAL ROLLER BEARINGS

Every reasonable effort has been made to ensure the accuracy of the information contained in this writing, but no liability is accepted for errors, omissions or for any other reason.

FOR DISCUSSION ONLY