



The Timken Company

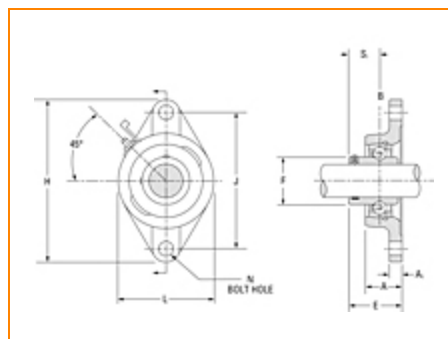
4500 Mt Pleasant St. NW

N. Canton, OH 44720

Phone: (234) 262-3000

E-Mail: CustomerCAD@timken.com • **Web site:** www.timken.com

Part Number YCJT 30 SGT, Fafnir® Two-Bolt Flanged Units Setscrew Locking



[Specifications](#) | [Dimensions](#) | [Basic Load Ratings](#)

Specifications

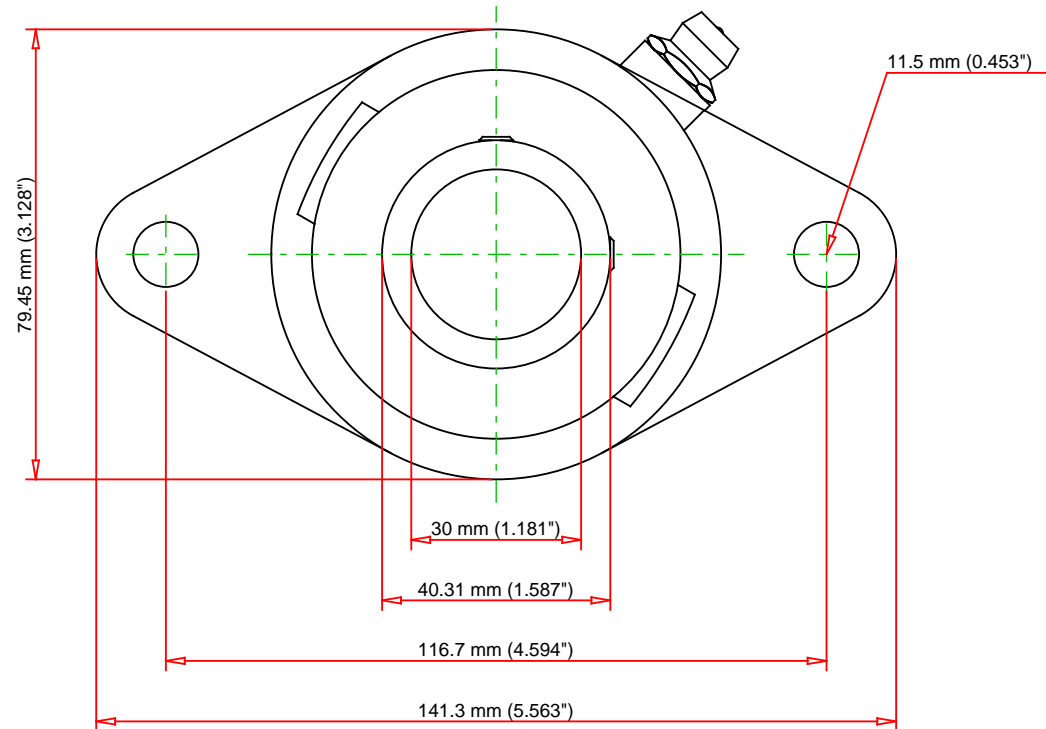
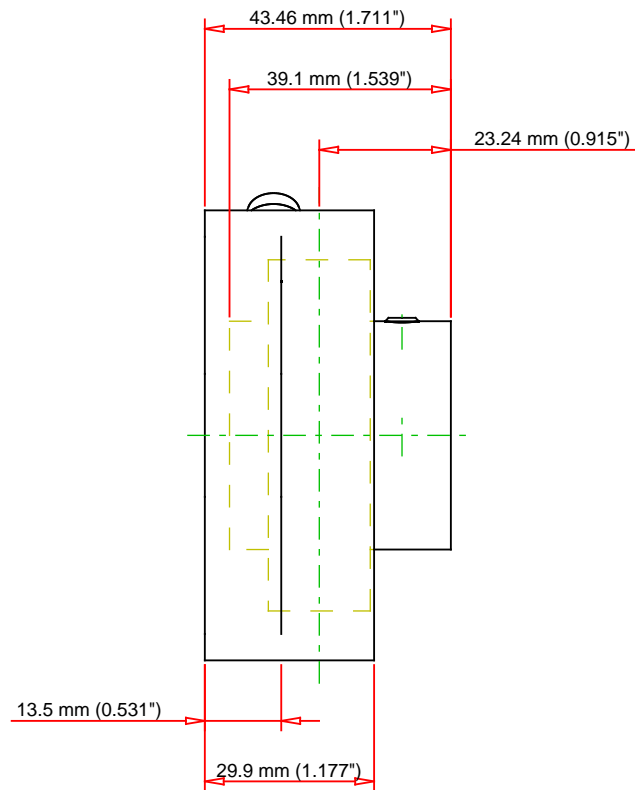
| | |
|------------------------------|----------------------|
| Shaft Size d | 1.181 in 30 mm |
| Bearing Type | Ball Bearing |
| Bearing Number | GYE30KRRB SGT |
| Dimension E | 1.711 in 43.46 mm |
| Inside Ring Outside Diameter | 1.587 in 40.3 mm |
| Series | Industrial |
| Weight | 2.4 lb 1.09 Kg |
| Seal Type | Shroud Seal |
| Housing Construction | Two-Bolt Flange |
| Alternate Part Name | YCJT30 SGT |

Dimensions

| | |
|--|----------------------|
| Total Length H | 141.3 mm 5.563 in |
| Total Height L | 79.45 mm 3.128 in |
| Housing Width A | 1.177 in 29.9 mm |
| Bolt Hole Spacing J | 116.7 mm 4.594 in |
| Bolt Hole Size N | 11.5 mm 0.453 in |
| Flange Thickness A1 | 13.5 mm 0.531 in |
| Center of Bearing from Housing End A2 | 20.06 mm 0.79 in |
| Inside Ring Width B | 39.29 mm 1.547 in |
| Center of Bearing from Bearing End S | 20.06 mm 0.790 in |

Basic Load Ratings

| | |
|----------------------------|---------------------|
| Static Load Rating | 2530 lbf 11300 N |
| Dynamic Load Rating | 4850 lbf 21600 N |



| | | | | |
|--------------------------------|---------------|-----|-------|----|
| Bearing Number | GYE30KRRB SGT | | | |
| Load Ratings - C _r | 4800 | lbf | 21600 | N |
| Load Ratings - C _{0r} | 2500 | lbf | 11000 | N |
| Weight | | lb | | kg |
| Bolt Size | M6x1 | | | |

TIMKEN

THE TIMKEN COMPANY
NORTH CANTON, OHIO USA

YCJT 30 SGT
Fafnir® Two-Bolt Flanged Units Setscrew Locking

Every reasonable effort has been made to ensure the accuracy of the information contained in this writing, but no liability is accepted for errors, omissions or for any other reason.

FOR DISCUSSION ONLY