

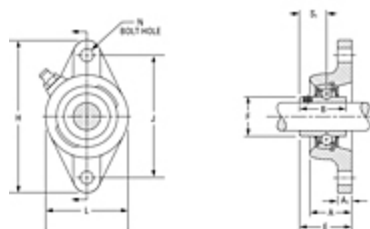


**The Timken Company**  
 4500 Mt Pleasant St. NW  
 N. Canton, OH 44720  
**Phone:** (234) 262-3000  
**E-Mail:** [CustomerCAD@timken.com](mailto:CustomerCAD@timken.com) • **Web site:** [www.timken.com](http://www.timken.com)

## Part Number YCJTM 1 15/16, Fafnir® Two-Bolt Flanged Units Setscrew Locking



**YCJTM Medium Duty  
Series Setscrew Lock**



[Specifications](#) | [Dimensions](#) | [Basic Load Ratings](#)

### Specifications

Shaft Size d	1 15/16 in 49.2 mm
Bearing Type	Ball Bearing
Bearing Number	GYM1115KRRB
Dimension E	2.547 in 64.7 mm
Inside Ring Outside Diameter	2.747 in 69.77 mm
Series	Medium-Duty
Weight	8.8 lb 3.99 Kg
Seal Type	Shroud Seal
Housing Construction	Two-Bolt Flange

Alternate Part Name

YCJTM1 15/16

## Dimensions

**Total Length H** 215.9 mm  
8.50 in

**Total Height L** 127.0 mm  
5.00 in

**Housing Width A** 1.843 in  
46.8 mm

**Bolt Hole Spacing J** 184.2 mm  
7.252 in

**Bolt Hole Size N** 17.07 mm  
0.672 in

**Flange Thickness A1** 16.7 mm  
0.657 in

**Center of Bearing from Housing  
End A2** 31.4 mm  
1.236 in

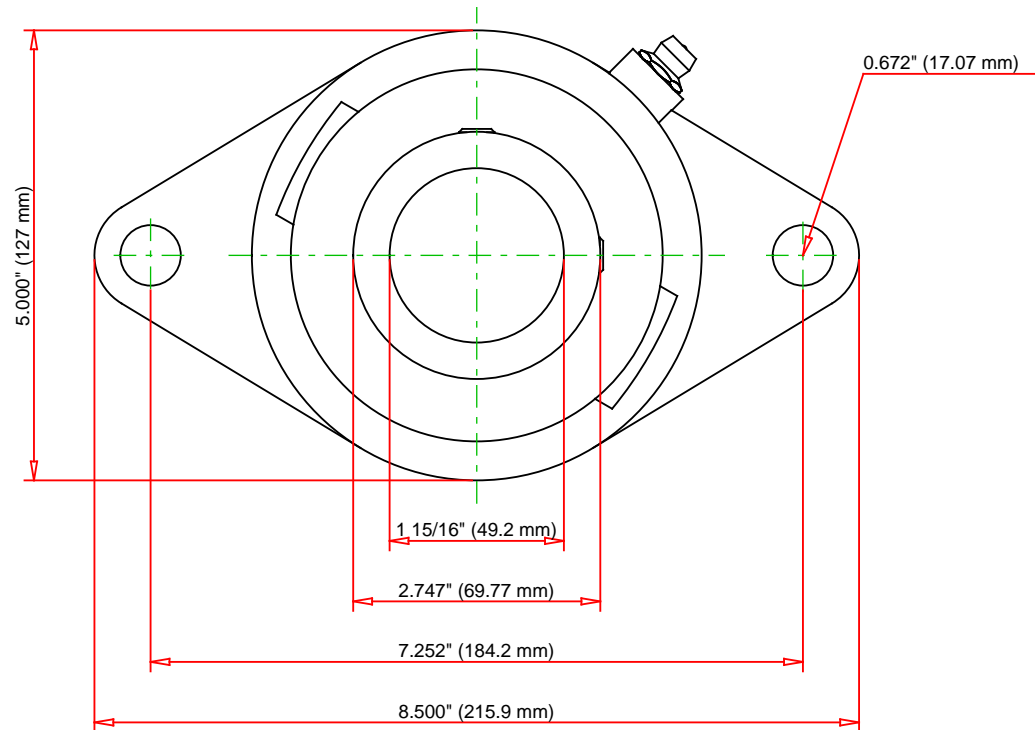
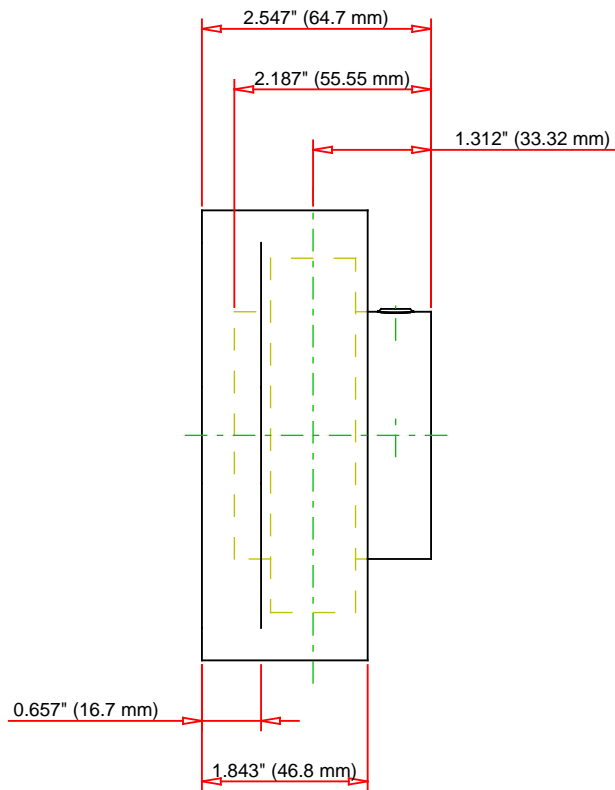
**Inside Ring Width B** 55.60 mm  
2.189 in

**Center of Bearing from Bearing  
End S** 31.4 mm  
1.236 in

## Basic Load Ratings

**Static Load Rating** 6570 lbf  
29200 N

**Dynamic Load Rating** 10800 lbf  
48100 N



Bearing Number	GYM1115KRRB			
Load Ratings - C <sub>r</sub>	10800	lbf	48100	N
Load Ratings - C <sub>0r</sub>	6400	lbf	28500	N
Weight		lb		kg
Bolt Size	M10x1.5			

**TIMKEN**

THE TIMKEN COMPANY  
NORTH CANTON, OHIO USA

**YCJTM 1 15/16**  
Fafnir® Two-Bolt Flanged Units Setscrew Locking

Every reasonable effort has been made to ensure the accuracy of the information contained in this writing, but no liability is accepted for errors, omissions or for any other reason.

**FOR DISCUSSION ONLY**