

External Swage Notched NOS Stems and Ferrules

⚠ WARNING

The notched system allows you to better manage your inventories. You can stock one stem and two ferrules, and cover the same hose range with less inventory. *You must purchase a fitting and the matching ferrule to create an assembly.*

Features:

- For hose outside diameters of 2-4/64" and below, *couplings are crimp only.*
- For hose outside diameters of 2-5/64" and above, couplings can be crimped or swaged.
- See page 73 for cam and groove style notched NOS fittings.



Only use the NOS shank with the NOS ferrules.
Due to differences in dimensions and tolerances for safety reasons,
do not use other manufacturer's stems or ferrules with Dixon™ Holedall™ products.

stems

Size	PSI	316 Stainless Steel Part #	Price/E
1½"	250	RST150NOS	\$45.40
2"	250	RST200NOS	54.00
3"	250	RST300NOS	119.60
4"	1	RST400NOS	183.35

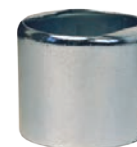
¹ Contact Dixon™ for pressure information



RST200NOS

ferrules

Size	Hose OD From:	To:	304 Stainless Steel Part #	Price/E
1½"	1-60/64"	2-12/64"	GAS2334NOS	\$32.30
1½"	2-4/64"	2-22/64"	GAS2370NOS	34.50
2"	2-30/64"	2-44/64"	GAS2709NOS	31.50
2"	2-42/64"	2-54/64"	GAS2885NOS	64.40
3"	3-30/64"	3-46/64"	GAS3760NOS	46.35
3"	3-47/64"	3-54/64"	GAS3885NOS	63.00
4"	4-40/64"	4-47/64"	GAS5010NOS	235.00



Notched Turned Back Nipples

Features:

- stems are for use with lap joint flanges on page 726
- When used with an appropriate notched ferrule, these fittings can be swaged or crimped onto hose providing improved shank retention.
- When used with double bolt or band clamps, notched turn back nipples provide shank retention similar to that of the King™ turned back nipples.
- The stem can be removed from a damaged hose by cutting away the ferrule without necessarily damaging the fitting.
- for use with notched ferrule above

stems

Size	Carbon Steel Part #	Price/E	316 Stainless Steel Part #	Price/E
1½"	N150NO	\$31.50	RN150NO	\$80.60
2"	N200NO	35.55	RN200NO	92.70
2½"	N250NO	55.00	RN250NO	125.00
3"	N300NO	84.25	RN300NO	162.00
4"	N400NO	141.10	RN400NO	248.25

ferrules

Size	Hose OD From:	To:	304 Stainless Steel Part #	Price/E
1½"	1-60/64"	2-12/64"	GAS2334NO	\$34.80
1½"	2-4/64"	2-22/64"	GAS2370NO	38.35
2"	2-30/64"	2-44/64"	GAS2709NO	31.80
2"	2-42/64"	2-54/64"	GAS2885NO	69.55
2½"	2-54/64"	3"	GAS3012NO	64.50
2½"	3-1/64"	3-13/64"	GAS3260NO	68.80
3"	3-30/64"	3-46/64"	GAS3760NO	45.40
3"	3-47/64"	3-54/64"	GAS3885NO	62.10
4"	4-40/64"	4-47/64"	GAS5010NO	258.75



Special pushers required:
1½" stem - RN150NOPUSH
2" stem - RN200NOPUSH
2½" stem - RN250NOPUSH
3" stem - RN300NOPUSH
4" stem - RN400NOPUSH



Dixon™ stems and ferrules are specifically designed to be used together as a coupling system.
Due to differences in dimensions and tolerances for safety reasons,
do not use other manufacturer's stems or ferrules with Dixon™ Holedall™ products.