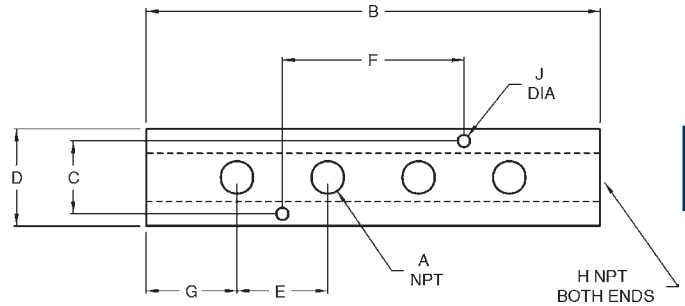


Bar Manifolds

Features:

- can be mounted on a wall or work bench, safely distributing four hose lines to a work area
- maximum operating pressure: **300 PSI** at ambient temperature (70°F)
- brass hex head plugs sold on page 342



F

Dimensions

Aluminum		A	B	C	D	E	F	G	H	J
Part #	Price/E									
AMF32	\$74.10	1/4"	7 5/8"	7/8"	1 1/4"	1 7/8"	3 3/4"	1"	3/8"	.20"
AMF42	74.10	1/4"	7 5/8"	1 1/8"	1 1/2"	1 7/8"	3 3/4"	1"	1/2"	.20"
AMF43	74.10	3/8"	8"	1 1/8"	1 1/2"	2"	4"	1"	1/2"	.20"

3 in 1 Manifolds

Features:

- supplies 3 air operated tools from a single hose permitting use of air by more than one mechanic
- can be mounted to a pipe at workbench or overhead
- different tools in the shop use different styles of couplers, mount 3 different style couplers on one manifold

NPT Inlet (1)	NPT Outlets (3)	Aluminum	
		Part #	Price/E
1/4"	1/4"	D3404	\$18.55
3/8"	1/4"	D3406	17.80
1/2"	1/4"	D3408	18.55



Flat Hex Manifolds

Feature:

- designed to lay flat on the floor, safely distributing three hose lines to the work area

NPT Inlet (1)	NPT Outlets (3)	Brass	
		Part #	Price/E
1/4"	1/4"	3122	\$20.00
3/8"	1/4"	3132	23.75
3/8"	3/8"	3133	27.50

