

FILTER/REGULATOR-LUBRICATOR

PTH 1/8" PTF, 1/4" PTF Combination Units

Compact design

Filter removes liquids and solid particles down to 5 µm

Push to lock adjusting knob with tamper resistant option

Micro-Fog lubricator provides air line lubrication

to one or more air driven tools or other devices

Nearly constant oil density output with varying air flow

TECHNICAL DATA

Fluid:

Compressed air

Maximum pressure

150 psig (10 bar)

Operating temperature*

0° to 125°F (-20° to 50°C)

* Air supply must be dry enough to avoid ice formation at temperatures below 35°F (2°C)

Typical flow at 100 psig (7 bar) inlet pressure, 90 psig (6.3 bar) set pressure and a droop of 15 psig (1 bar) from set:

1/8" ports: 10 scfm (5 dm³/s)

1/4" ports: 14 scfm (7 dm³/s)

Drain connection:

1/8" male pipe

Filter/Regulator

Particle removal:

5 µm Within ISO 8573-1, Class 3 and Class 5

Gauge ports:

1/8" PTF with PTF main ports

Lubricator

Start point (i.e., minimum flow required for lubricator operation): 0.5 scfm (0.24 dm³/s) at 90 psig (6.3 bar) inlet pressure

Nominal bowl capacity:

1 fluid ounce (31 ml)

Materials

Bodies: Zinc

Filter/Regulator bonnet: Acetal

Filter/Regulator valve seat: Acetal

Bowls: Polycarbonate

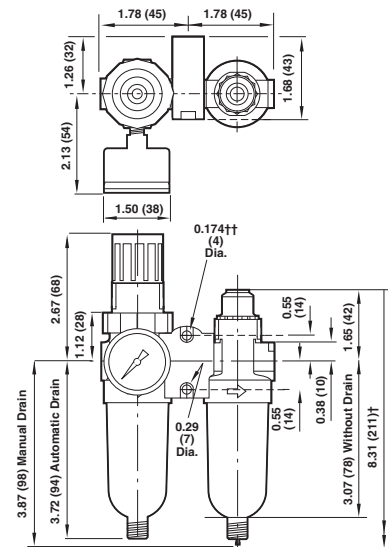
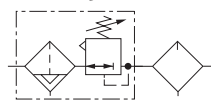
Lubricator sight-feed dome: Transparent nylon

Filter element: Sintered polypropylene

Elastomers: Nitrile



ISO Symbol



† Minimum distance required to remove bowl
‡ Mounting holes

Models

PTH SERIES		Port	Outlet pressure	Flow**
MANUAL DRAIN	AUTO DRAIN	Port size	adjustment	SCFM
Model No.		PTF	range* PSIG (bar)	(dm³/s)



PTH-100-M1AA	PTH-100-A1AA	1/8"	5 to 100 (0.3 to 7)	10 (5)
PTH-200-M1AA	PTH-200-A1AA	1/4"	5 to 100 (0.3 to 7)	14 (7)

* Outlet pressure can be adjusted to pressures in excess of, and less than, those specified. Do not use these units to control pressures outside of the specified ranges

** Typical flow at 100 psig (7 bar) inlet pressure, 90 psig (6.3 bar) set pressure and a droop of 15 psig (1 bar) from set

Accessories

Neck mounting bracket	Sight feed dome	Service kit filter/regulator*	Service kit lubricator**
-----------------------	-----------------	-------------------------------	--------------------------



18-025-003	4055-50	3820-02	3795-03
18-025-003	4055-50	3820-02	3795-03

* Filter/regulator service kit contains slip ring, diaphragm, valve seat with o-ring, valve, valve spring, element, element gasket, and bowl o-ring

** Lubricator service kit contains sight-feed dome seal, cartridge o-ring, and bowl o-ring.

