

The Right Connection®

Dixon Sanitary Personal Care

dixonvalve.com • Customer Service: 800.789.1718

Personal Care

JRZL-Series Positive Displacement Pumps



Applications:

- Unloading
- Transfer
- Metering
- CIP supply

Material:

- 316L

Features:

- Front loading seals
- Various rotor options
- 1"- 4" models stainless steel gear box standard
- 3A & EHEDG
- 100% CIPable

Sizes:

- 1" to 10"

BC/BP- Series Centrifugal Pumps



Applications:

- Unloading
- Transfer
- CIP supply

Materials:

- 316L
- Buna, EPDM, Silicone and FKM elastomers

Features:

- Impeller retainer or threaded impeller nut options
- Stamped volute
- Wet ends, motor pump units and carts
- 3A & CIPable

Sizes:

- Inlet 1½" to 6"
- Outlet 1½" to 4"

Mix Proof Valves



Applications:

- Separation of product and cleaning agent
- Manifolds
- Diversion

Material:

- 316L

Features:

- Body machined from solid bar
- Standard O-rings
- Service possible without compressed air
- Piggable option

Sizes:

- 1" to 6"

Aseptic Seat Valves



Applications:

- Aseptic isolation
- Aseptic diversion
- Flow control

Material:

- 316L

Features:

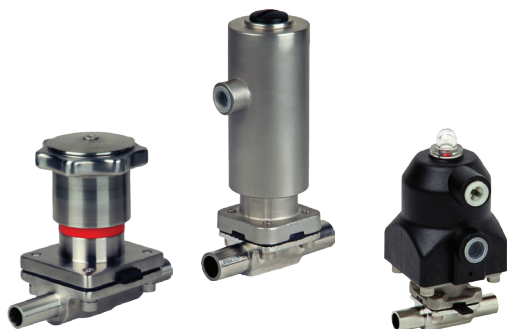
- PTFE bellows
- Body machined from solid bar
- Manual or automated
- Various control top options
- 3A and CIPable

Sizes:

- 1" to 4"

Personal Care

Diaphragm Valves

**Applications:**

- Isolation
- Diversion
- Point of use
- Control
- Aseptic

Material:

- 316L

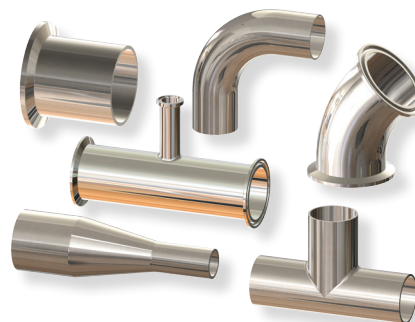
Features:

- Circumferential defined sealing angle
- Various bonnet, handle and actuator materials available
- Autoclavable
- Custom manifolds and configurations

Sizes:

- ¼" to 4"

Bio-Pharmaceutical Fittings

**Material:**

- 316L

Finish:

- PL finish- SF1
- PM finish- SF4

Sizes:

- ½" to 6"

Bio-Check Sampling Valve

**Applications:**

- Aseptic sampling

Material:

- 316L

Feature:

- Valve body from solid bar
- Manual override on actuated valve
- 3A and EHEDG
- CIPable

Size:

- 13mm x 1.5mm

Tubing

**Materials:**

- 304 and 316L stainless steel

Features:

- Polished and unpolished
- Laser welded
- 100% USA made

Sizes:

- ½" to 8" OD tube

Dixon®, founded in 1916, is a premier manufacturer and supplier of hose couplings, valves, dry-disconnects, swivels, and other fluid transfer and control products. The company's global reach includes a wide range of products for numerous industries including petroleum exploration, refining, transportation, chemical processing, food & beverage, steel, fire protection, construction, mining and manufacturing. Dixon's strategic objective is to create solutions that make products safer, leak-free, longer lasting, and always available.

dixonvalve.com • Customer Service: 800.789.1718

Dixon Sanitary

N25 W23040 Paul Road, Pewaukee, WI 53072

Fax: 800.789.4046

sanitarysales@dixonvalve.com

For complete catalog and literature downloads go to dixonvalve.com



You Tube™



**Dixon®
Customer Service**